

A

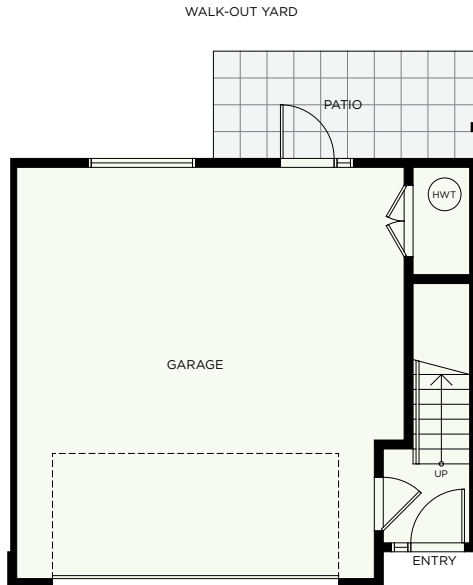
3 BEDROOM
2.5 BATH

INTERIOR 1,477 SF
DECK 89.5 SF
TOTAL 1,566.5 SF
GARAGE 521 SF

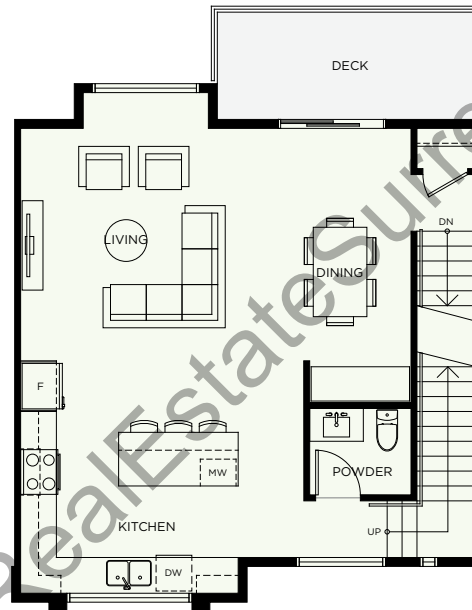


ELWYNN GREEN

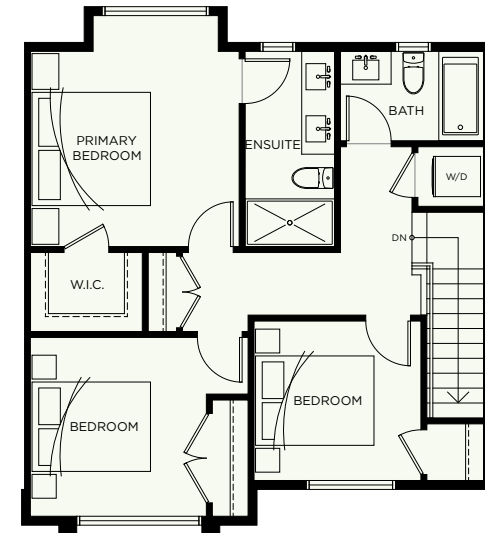
FLEETWOOD



LOWER LEVEL



MAIN LEVEL



UPPER LEVEL

www.RealestateSurrey.com



A1

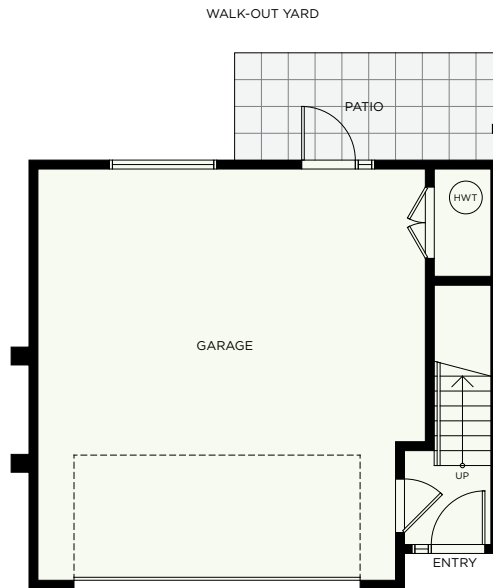
3 BEDROOM
2.5 BATH

INTERIOR 1,485 SF
DECK 89.5 SF
TOTAL 1,574.5 SF
GARAGE 525 SF

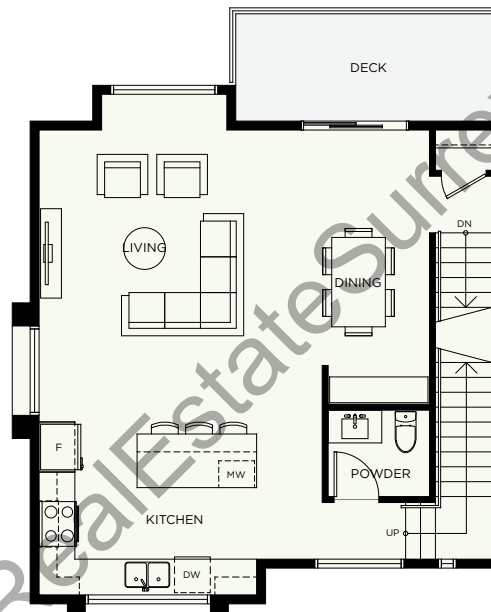


ELWYNN GREEN

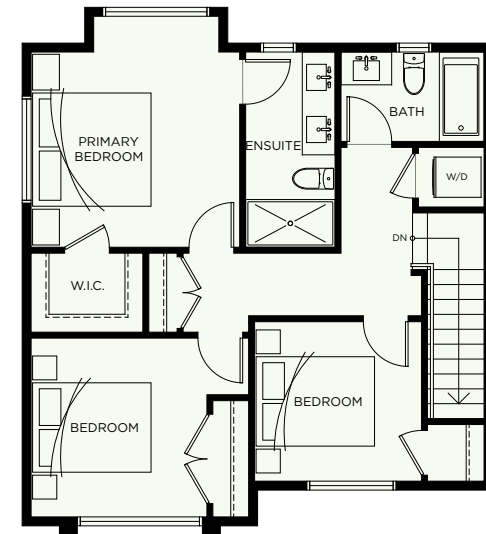
FLEETWOOD



LOWER LEVEL



MAIN LEVEL



UPPER LEVEL

www.RealestateSurrey.com



A2

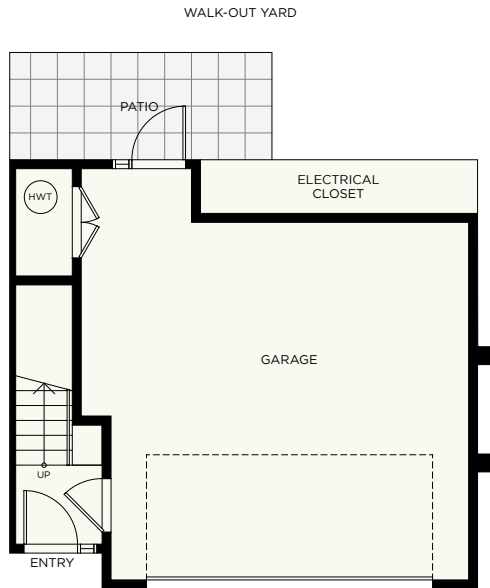
3 BEDROOM
2.5 BATH

INTERIOR 1,487 SF
DECK 88 SF
TOTAL 1,575 SF
GARAGE 476 SF

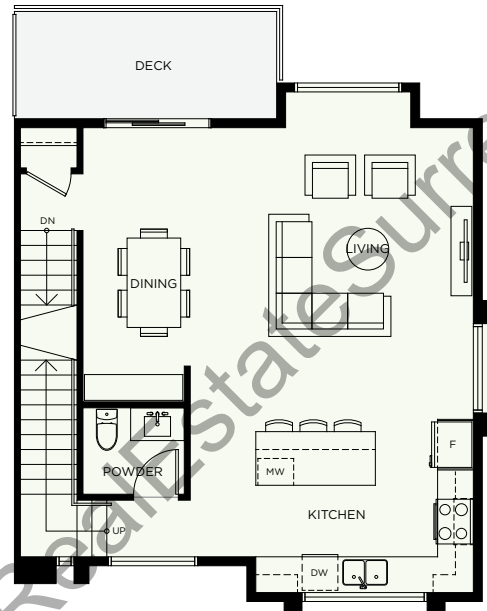


ELWYNN GREEN

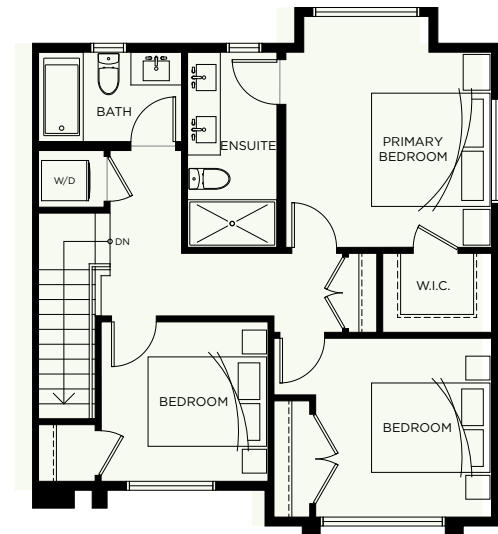
FLEETWOOD



LOWER LEVEL



MAIN LEVEL



UPPER LEVEL

www.RealestateSurrey.com



A3

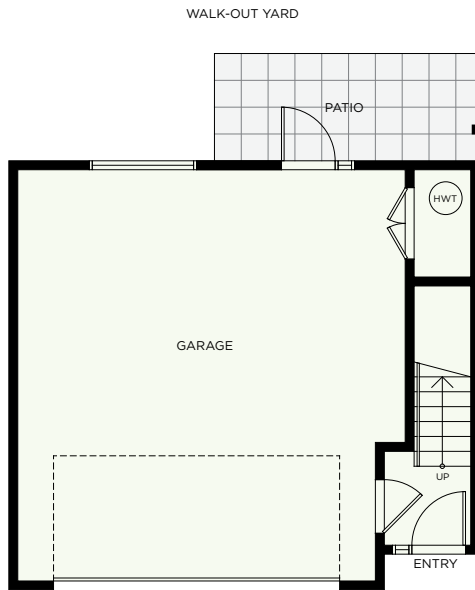
3 BEDROOM
2.5 BATH

INTERIOR 1,477 SF
DECK 88 SF
TOTAL 1,565 SF
GARAGE 525 SF

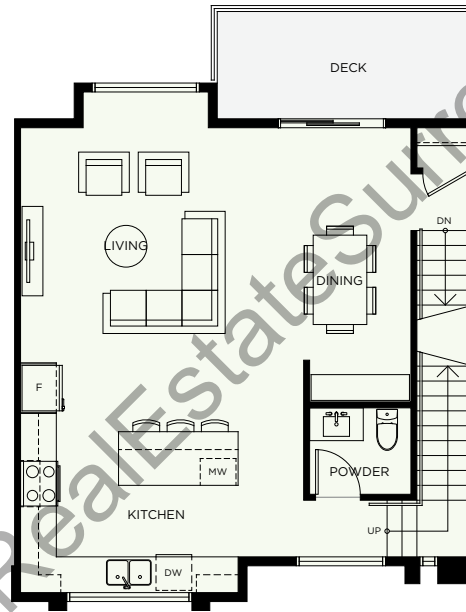


ELWYNN GREEN

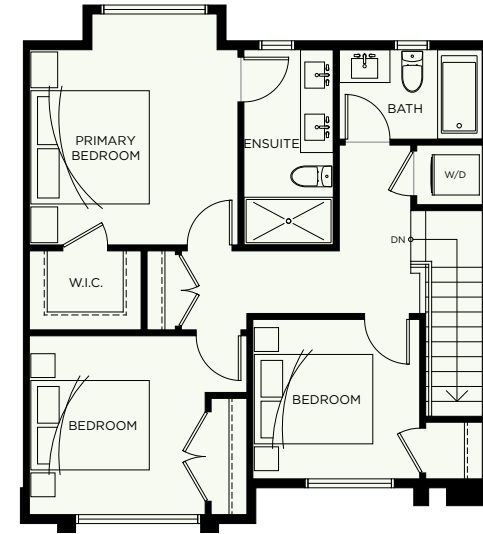
FLEETWOOD



LOWER LEVEL



MAIN LEVEL



UPPER LEVEL



A4

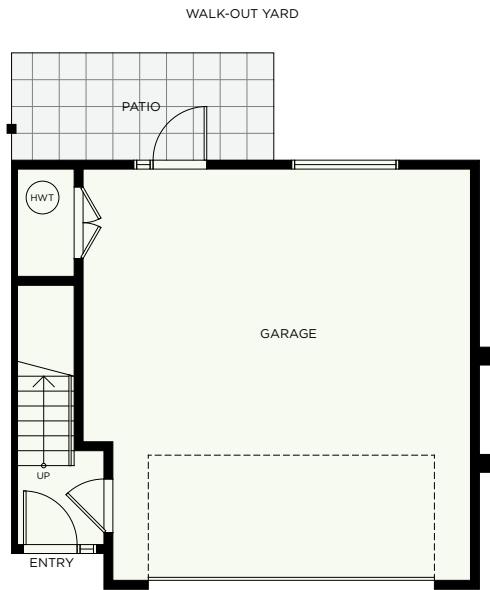
3 BEDROOM
2.5 BATH

INTERIOR 1,485 SF
DECK 88 SF
TOTAL 1,573 SF
GARAGE 525 SF

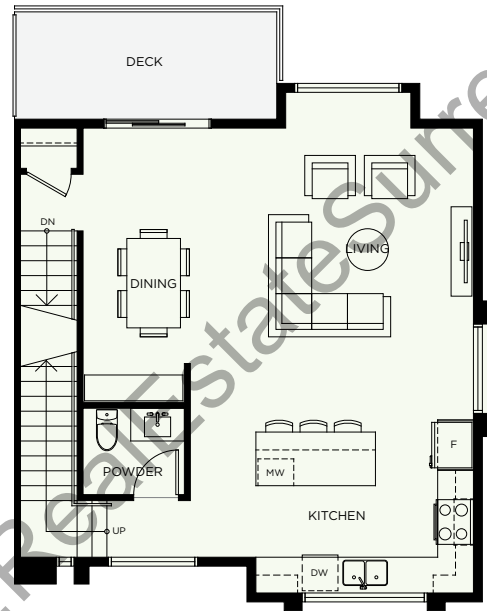


ELWYNN GREEN

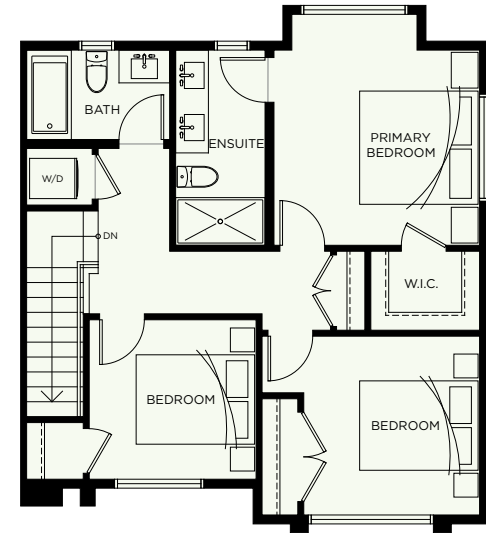
FLEETWOOD



LOWER LEVEL



MAIN LEVEL



UPPER LEVEL

www.RealEstateSurety.com



A5

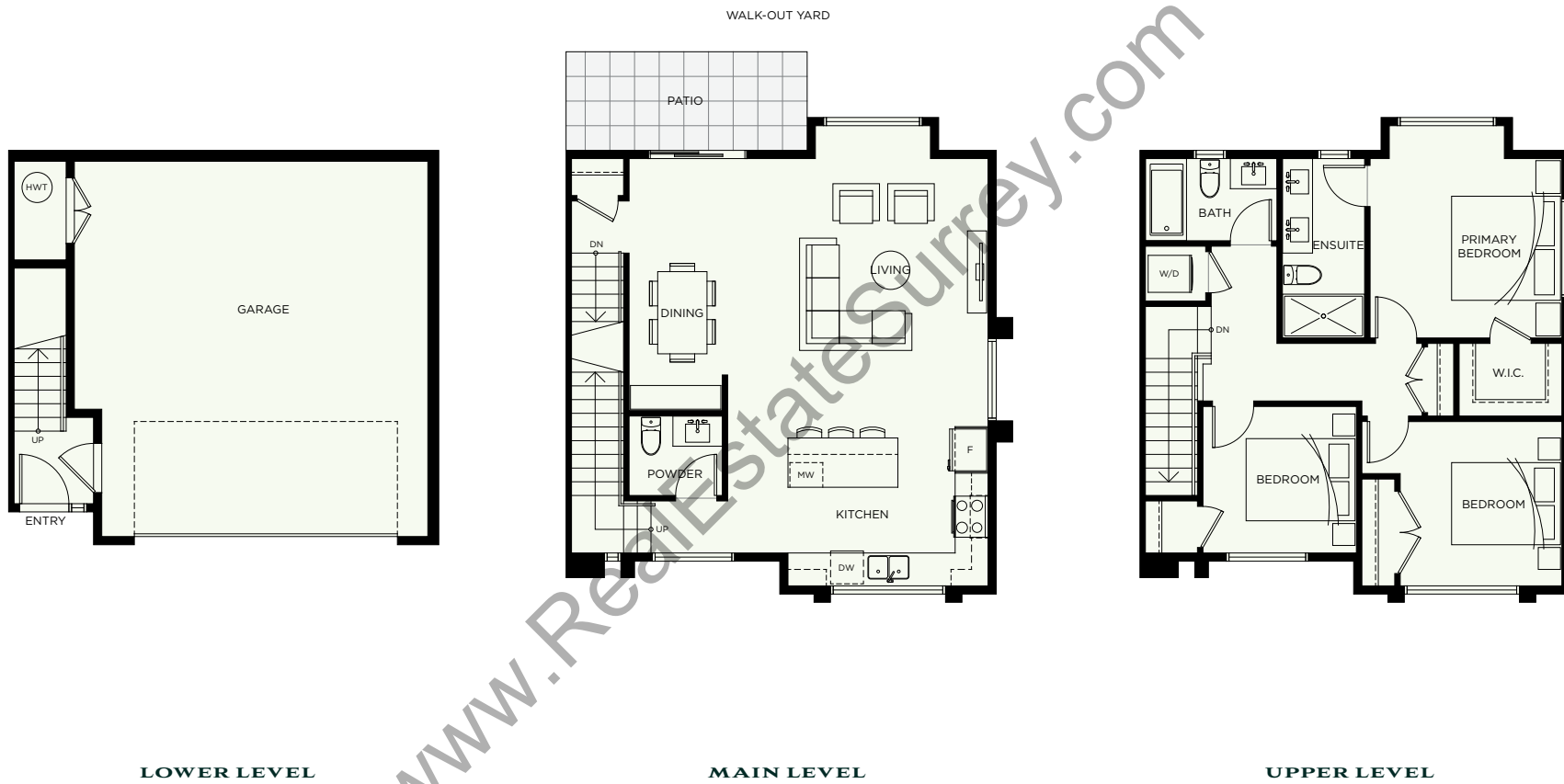
3 BEDROOM
2.5 BATH

INTERIOR 1,485 SF
GARAGE 525 SF



ELWYNN GREEN

FLEETWOOD



LOWER LEVEL

MAIN LEVEL

UPPER LEVEL



A6

3 BEDROOM
2.5 BATH

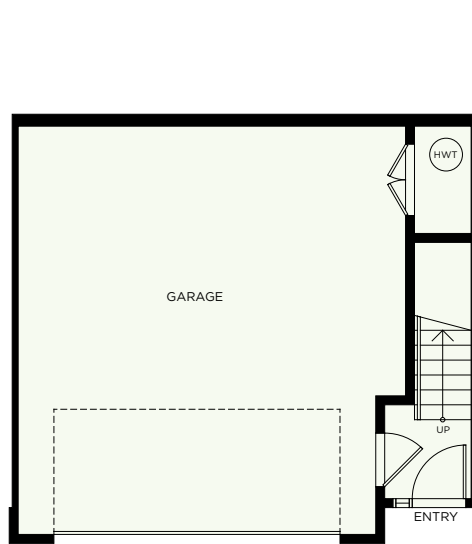
INTERIOR 1,477 SF
GARAGE 521 SF



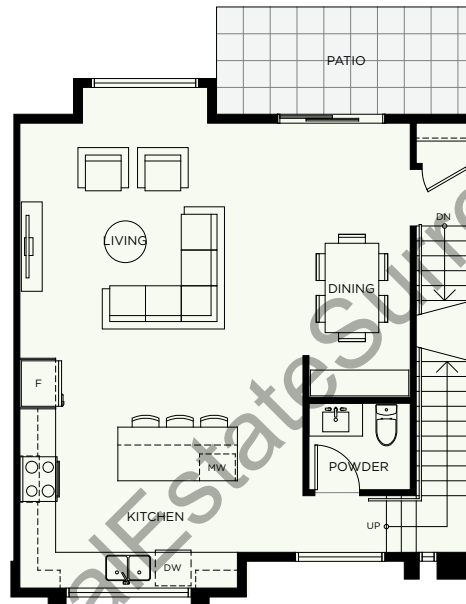
ELWYNN GREEN

FLEETWOOD

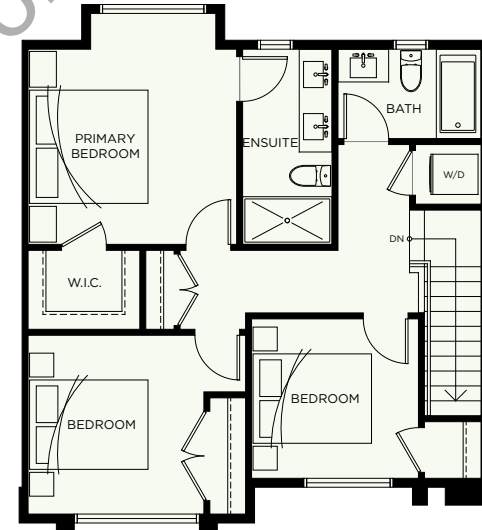
WALK-OUT YARD



LOWER LEVEL



MAIN LEVEL



UPPER LEVEL



A7

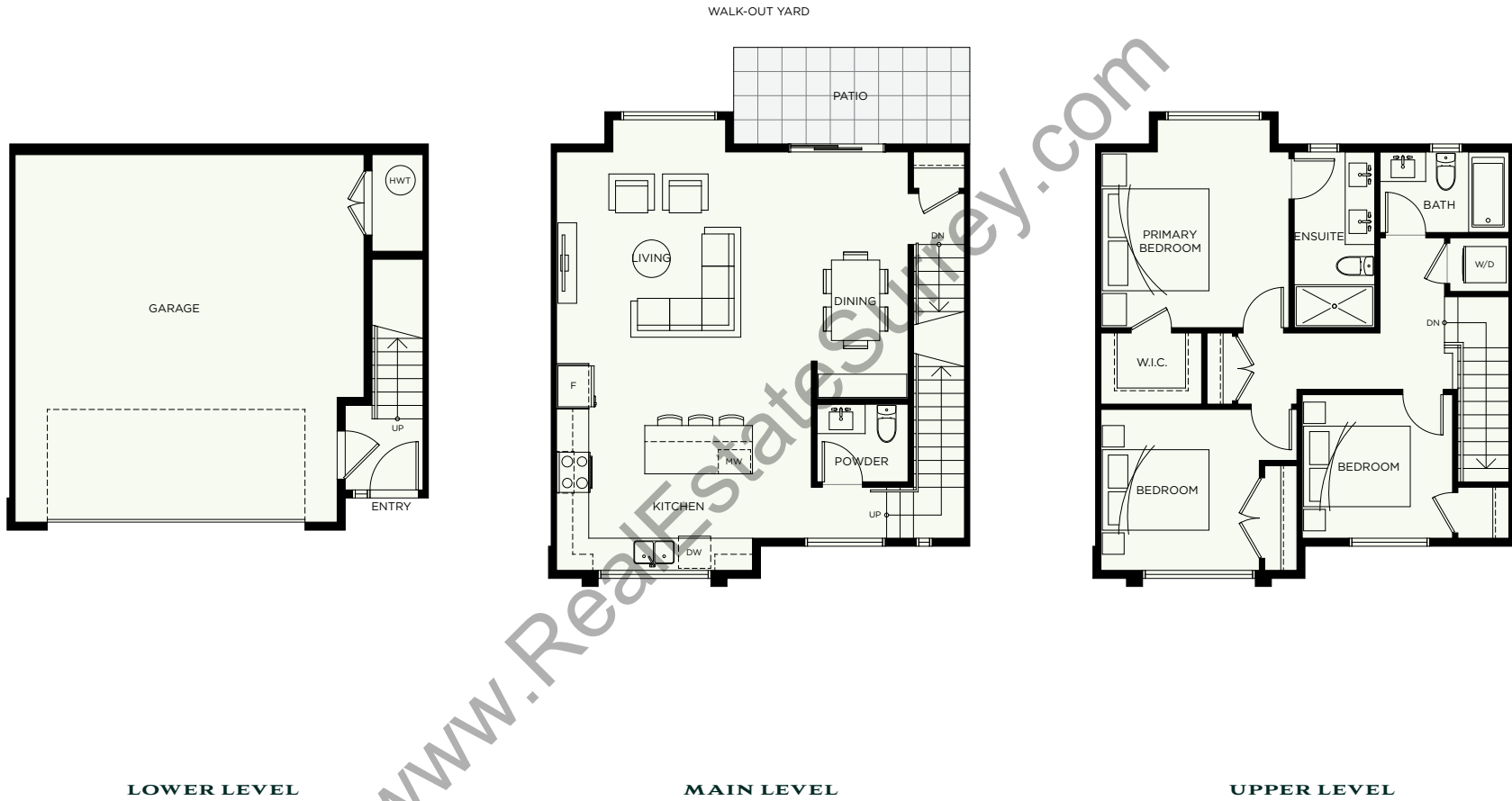
3 BEDROOM
2.5 BATH

INTERIOR 1,477 SF
GARAGE 521 SF



ELWYNN GREEN

FLEETWOOD



LOWER LEVEL

MAIN LEVEL

UPPER LEVEL



A8

3 BEDROOM
2.5 BATH

INTERIOR 1,485 SF
GARAGE 525 SF



ELWYNN GREEN

FLEETWOOD



www.RealestateSurrey.com



B

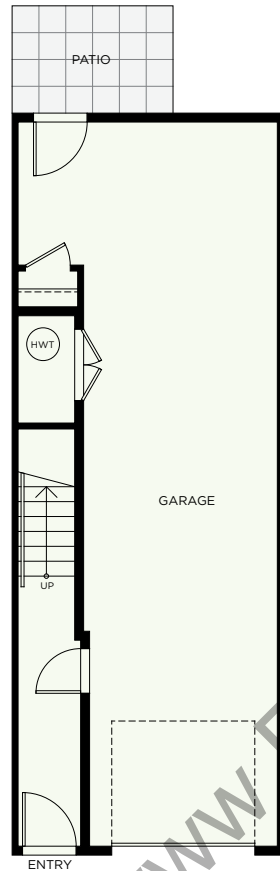
3 BEDROOM
2.5 BATH

INTERIOR 1,426 SF
DECK 55.8 SF
TOTAL 1,481.8 SF
GARAGE 502 SF

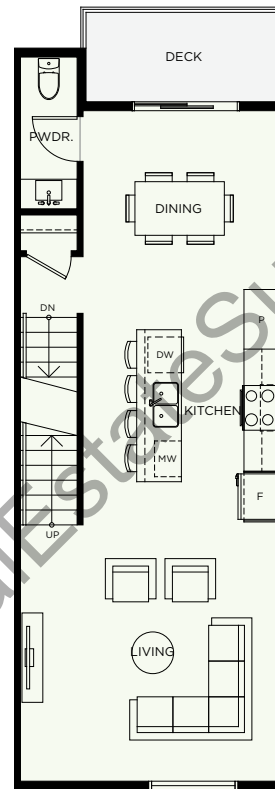


ELWYNN GREEN

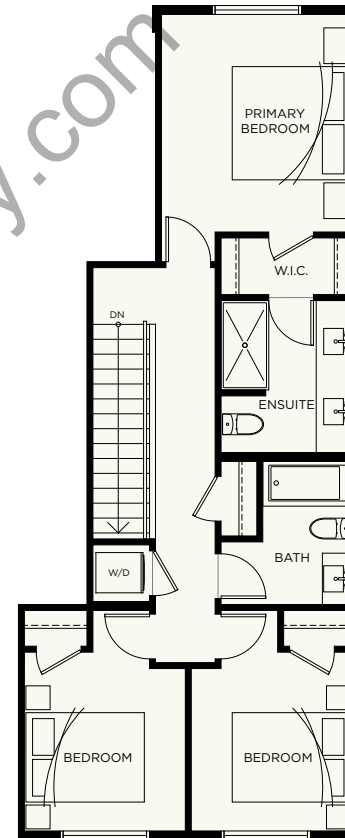
FLEETWOOD



LOWER LEVEL



MAIN LEVEL



UPPER LEVEL



B1

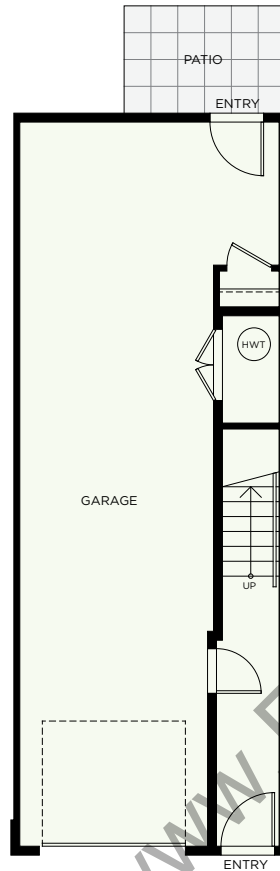
3 BEDROOM
2.5 BATH

INTERIOR 1,424 SF
DECK 55.8 SF
TOTAL 1,479.8 SF
GARAGE 502 SF

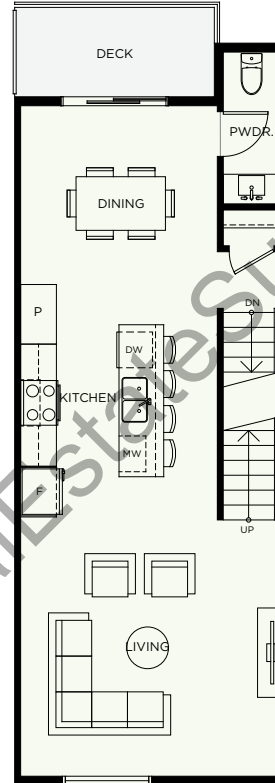


ELWYNN GREEN

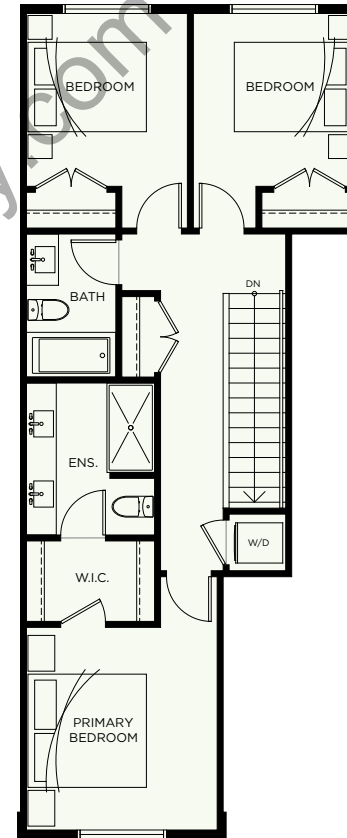
FLEETWOOD



LOWER LEVEL



MAIN LEVEL



UPPER LEVEL



B3

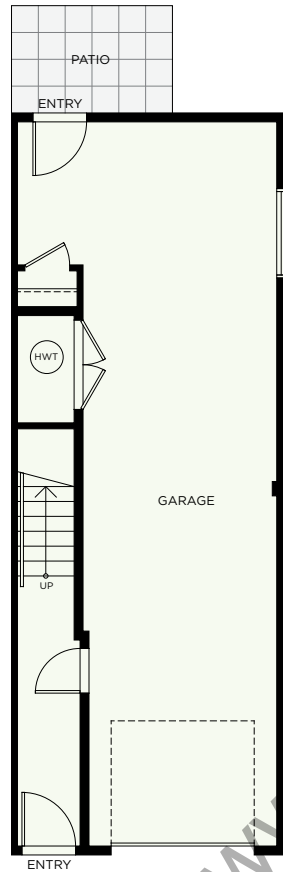
3 BEDROOM
2.5 BATH

INTERIOR 1,512 SF
DECK 66.6 SF
TOTAL 1,578.6 SF
GARAGE 509 SF

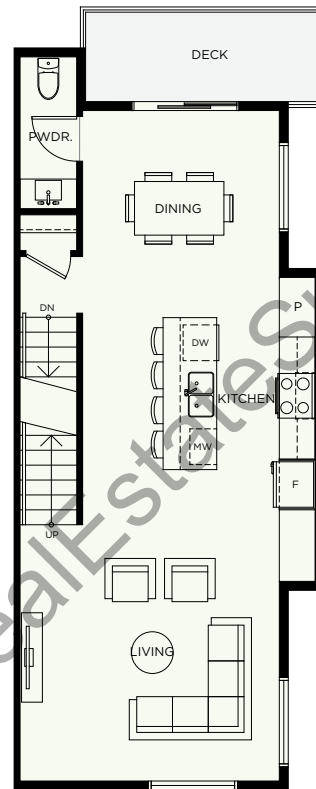


ELWYNN GREEN

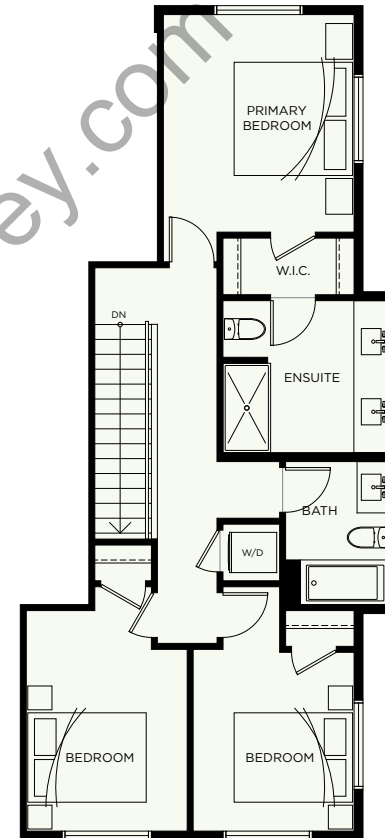
FLEETWOOD



LOWER LEVEL



MAIN LEVEL



UPPER LEVEL



B4

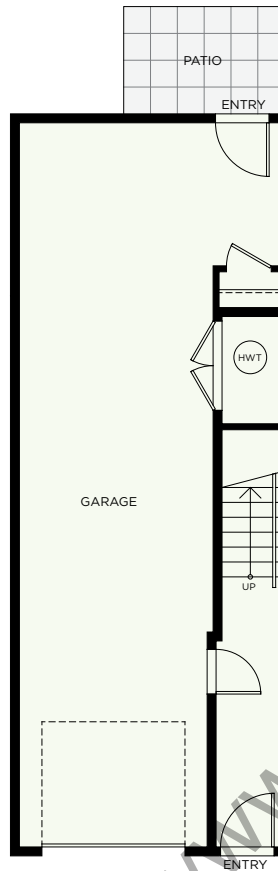
3 BEDROOM
2.5 BATH

INTERIOR 1,510 SF
DECK 66.6 SF
TOTAL 1,576.6 SF
GARAGE 509 SF

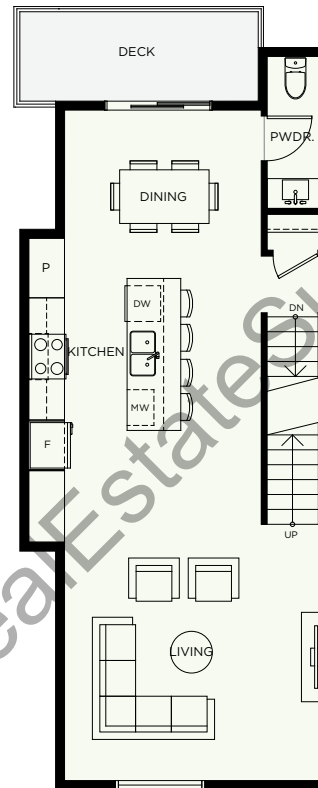


ELWYNN GREEN

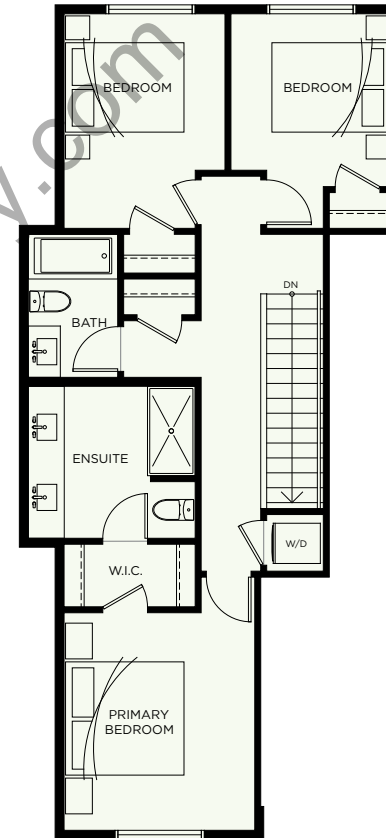
FLEETWOOD



LOWER LEVEL



MAIN LEVEL



UPPER LEVEL



B5

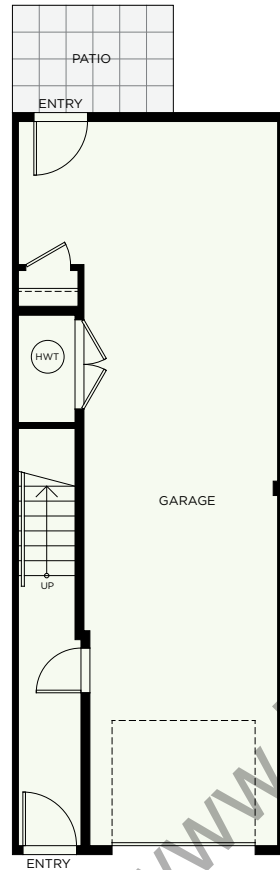
3 BEDROOM
2.5 BATH

INTERIOR 1,512 SF
DECK 66.6 SF
TOTAL 1,578.6 SF
GARAGE 509 SF

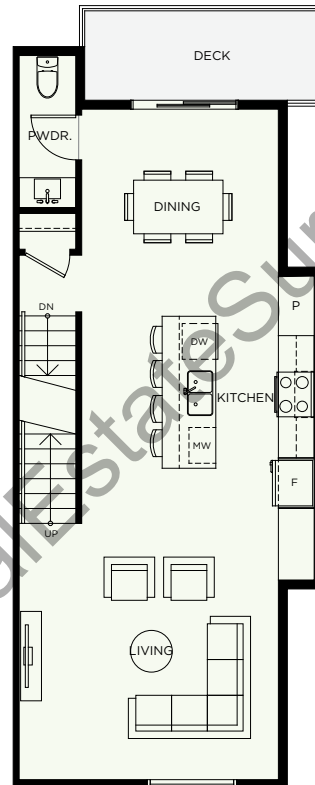


ELWYNN GREEN

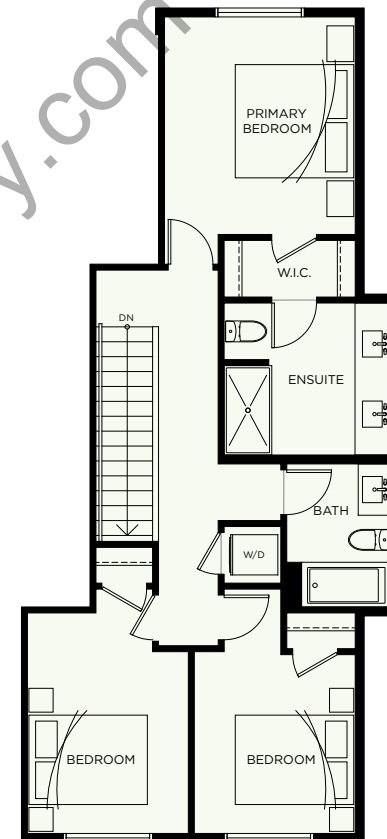
FLEETWOOD



LOWER LEVEL



MAIN LEVEL



UPPER LEVEL



D

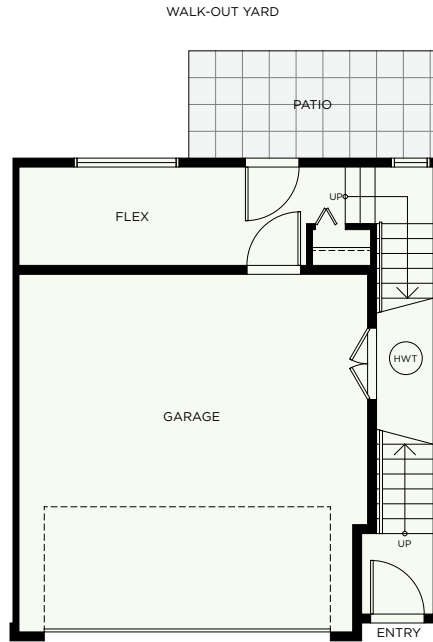
3 BEDROOM + FLEX 2.5 BATH

INTERIOR 1,624 SF
DECK 64 SF
TOTAL 1,688 SF
GARAGE 412 SF

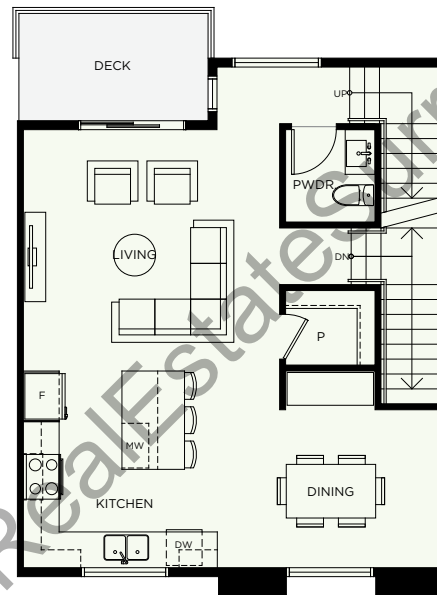


ELWYNN GREEN

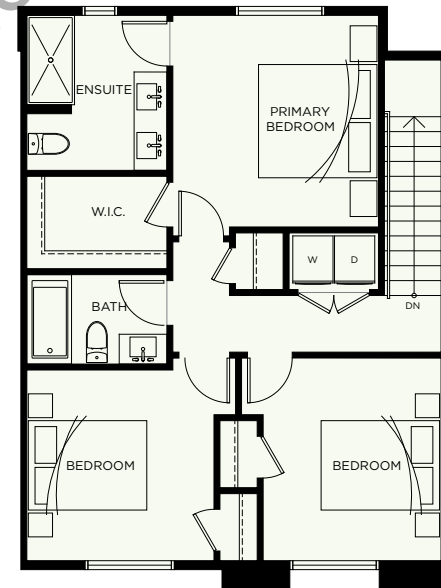
FLEETWOOD



LOWER LEVEL



MAIN LEVEL



UPPER LEVEL



D1

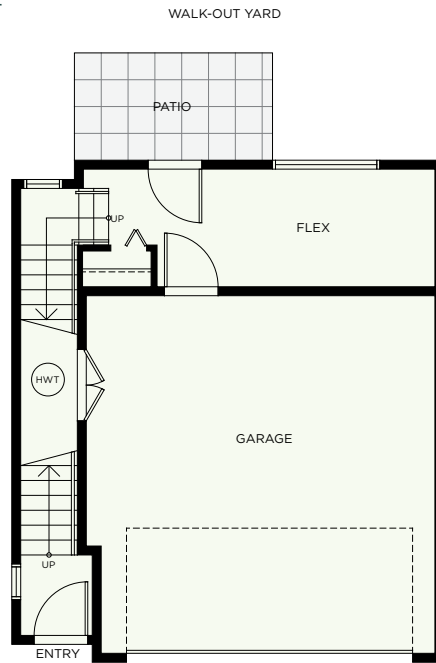
3 BEDROOM + BASEMENT FLEX 2.5 BATH

INTERIOR 1,669 SF
DECK 60.4 SF
TOTAL 1,729.4 SF
GARAGE 411 SF

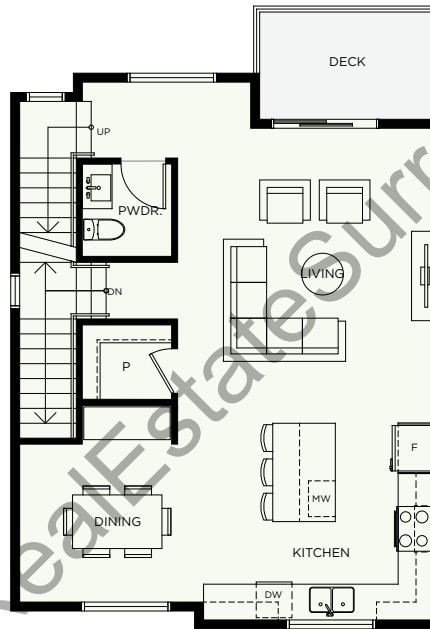


ELWYNN GREEN

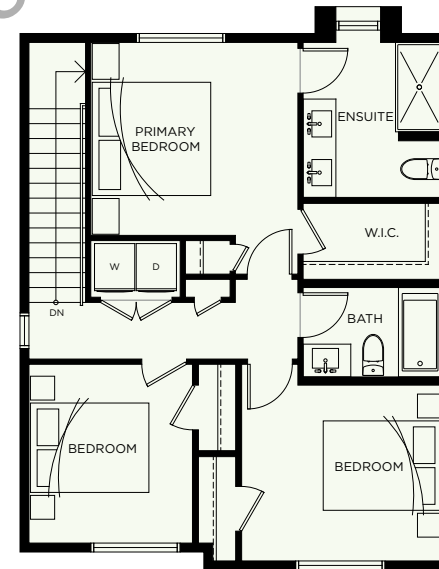
FLEETWOOD



LOWER LEVEL



MAIN LEVEL



UPPER LEVEL



D2

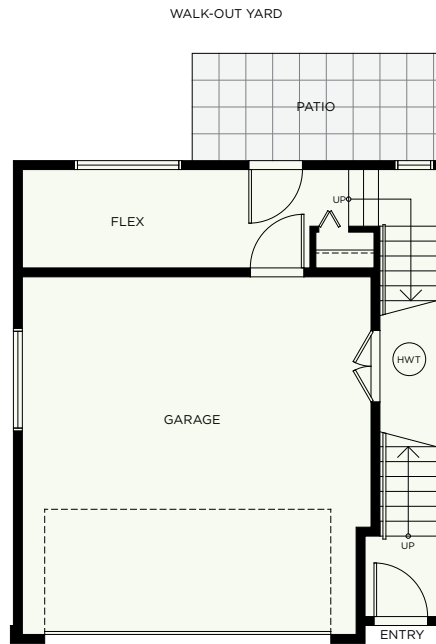
3 BEDROOM + FLEX
2.5 BATH

INTERIOR 1,686 SF
DECK 85 SF
TOTAL 1,771 SF
GARAGE 415 SF

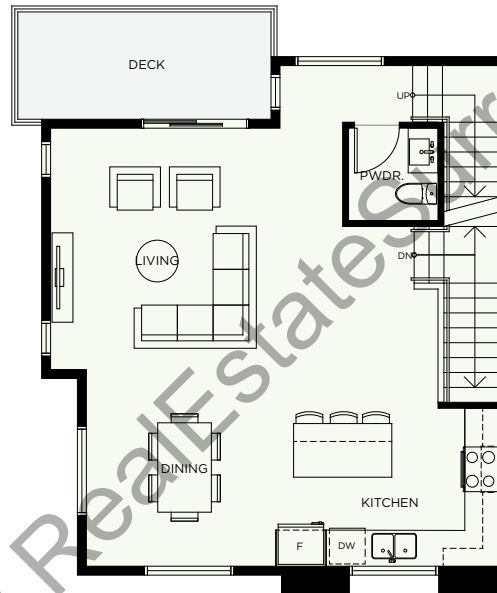


ELWYNN GREEN

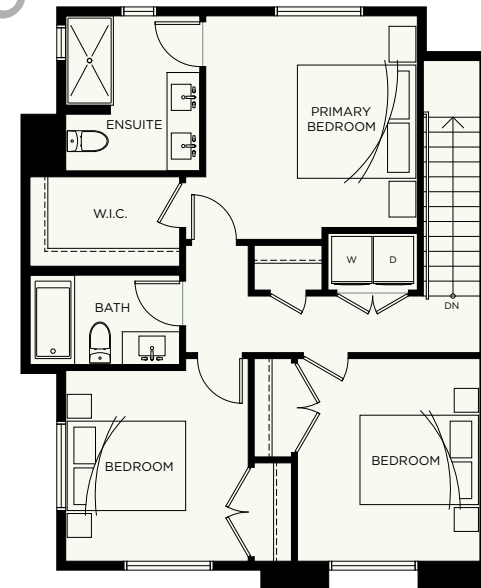
FLEETWOOD



LOWER LEVEL



MAIN LEVEL



UPPER LEVEL



D3

3 BEDROOM
2.5 BATH

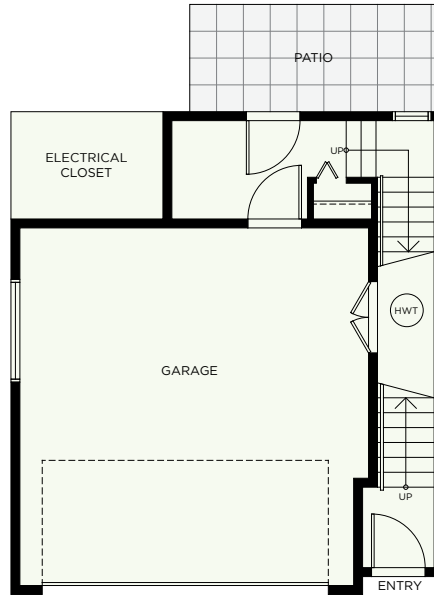
INTERIOR 1,633 SF
DECK 85 SF
TOTAL 1,718 SF
GARAGE 415 SF



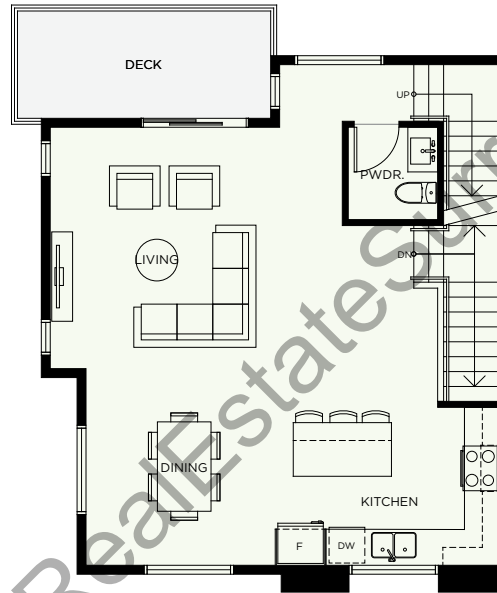
ELWYNN GREEN

FLEETWOOD

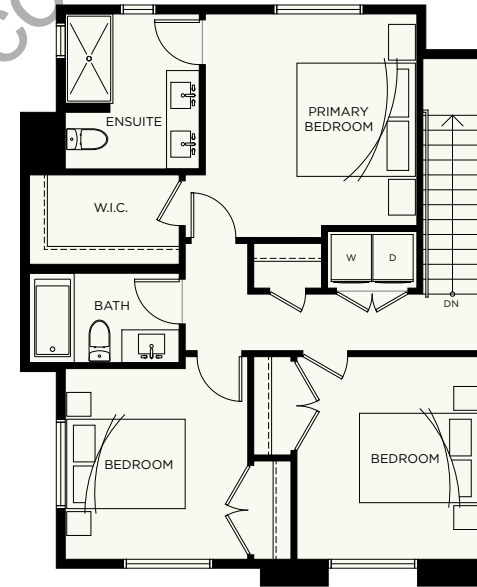
WALK-OUT YARD



LOWER LEVEL



MAIN LEVEL



UPPER LEVEL



D5

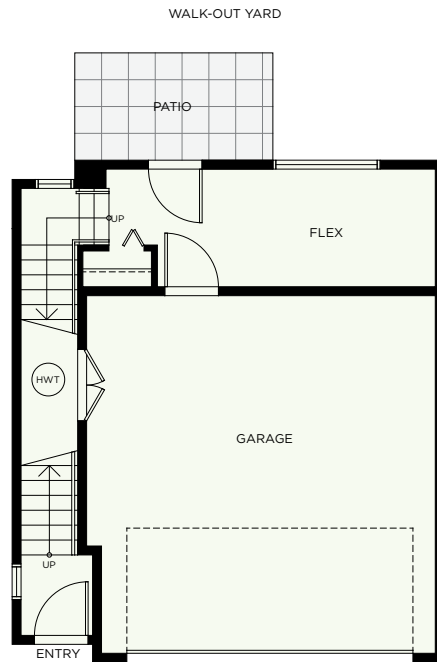
3 BEDROOM + DEN
2.5 BATH

INTERIOR 1,709 SF
DECK 65 SF
TOTAL 1,774 SF
GARAGE 415 SF

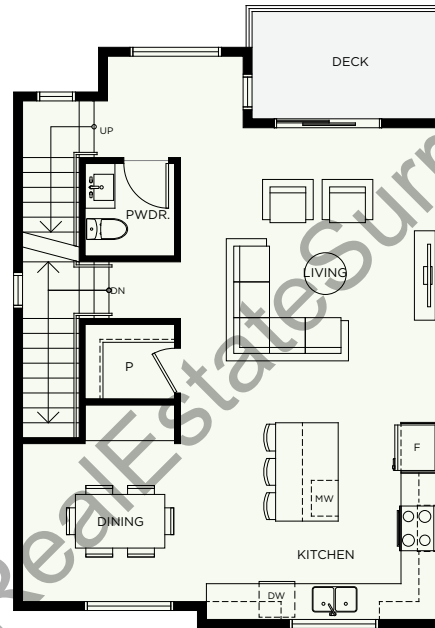


ELWYNN GREEN

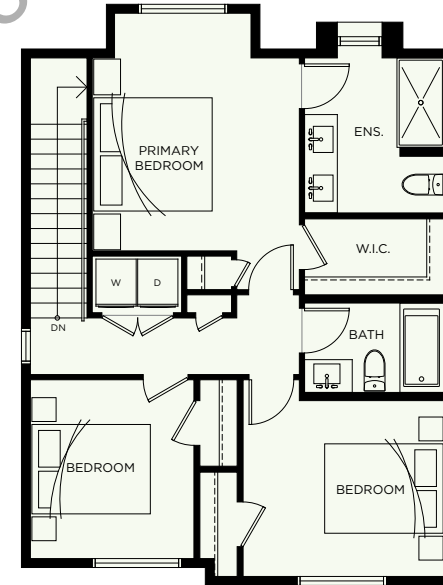
FLEETWOOD



LOWER LEVEL



MAIN LEVEL



UPPER LEVEL



E

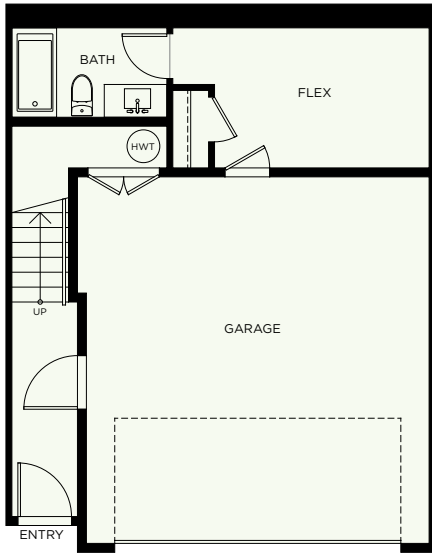
3 BEDROOM + FLEX 3.5 BATH

INTERIOR 1,964 SF
ROOFTOP 145 SF
TOTAL 2,109 SF
GARAGE 423 SF

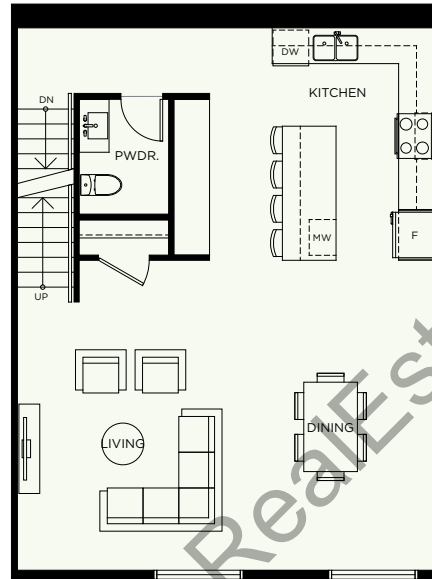


ELWYNN GREEN

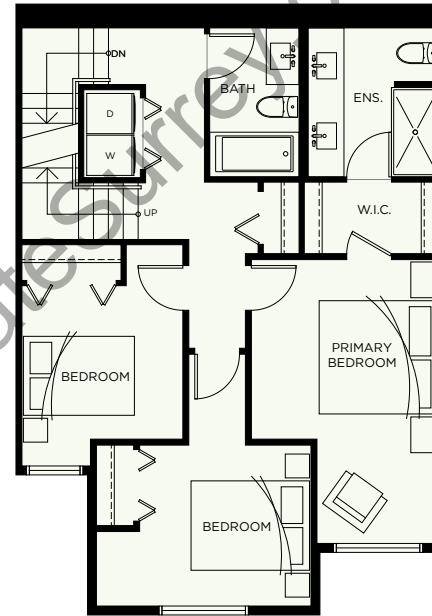
FLEETWOOD



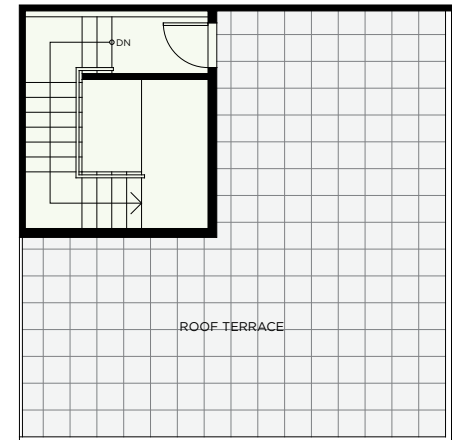
LOWER LEVEL



MAIN LEVEL



UPPER LEVEL



ROOF DECK LEVEL



E1

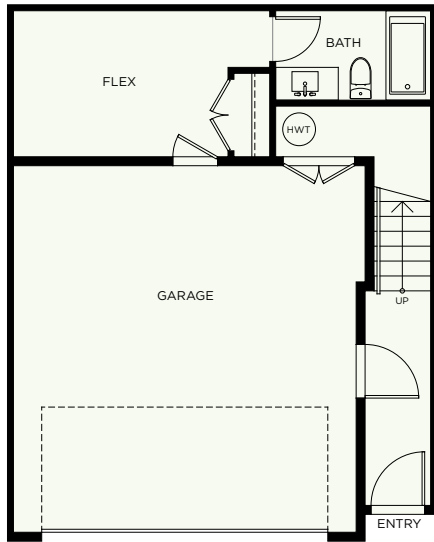
3 BEDROOM + FLEX
3.5 BATH

INTERIOR 1,983 SF
ROOFTOP 141 SF
TOTAL 2,124 SF
GARAGE 423 SF

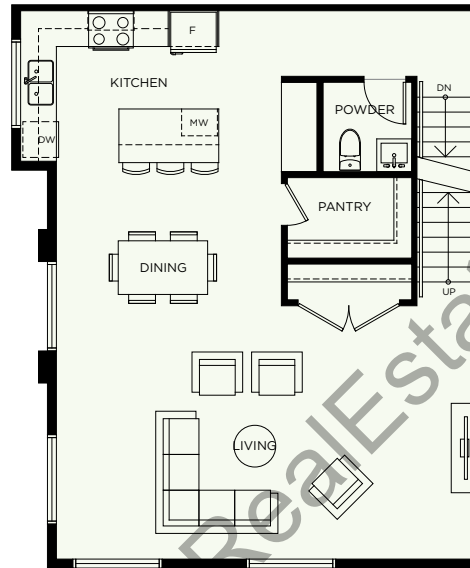


ELWYNN GREEN

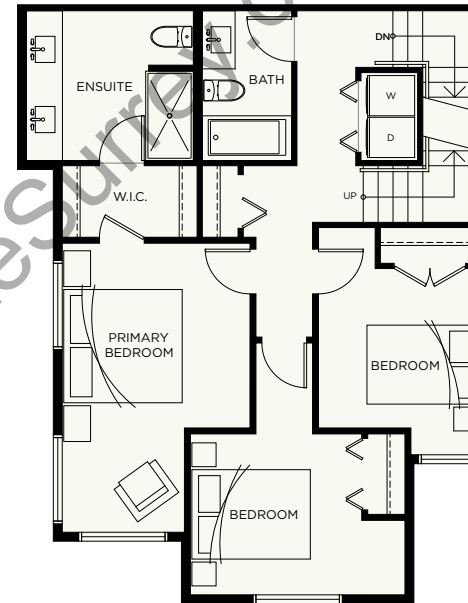
FLEETWOOD



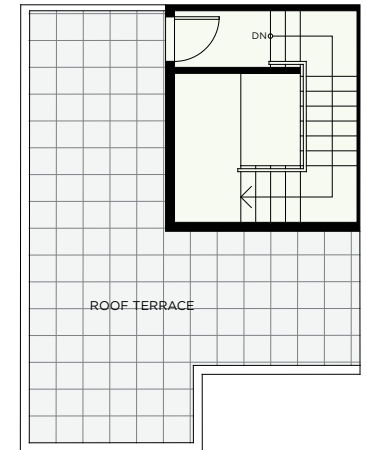
LOWER LEVEL



MAIN LEVEL



UPPER LEVEL



ROOF DECK LEVEL



E3

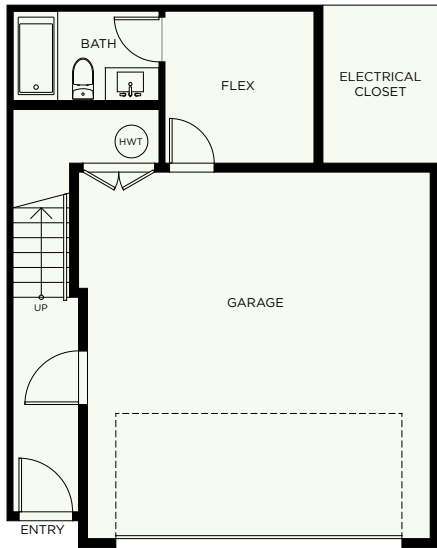
3 BEDROOM + FLEX
3.5 BATH

INTERIOR 1,949 SF
ROOFTOP 145 SF
TOTAL 2,094 SF
GARAGE 427 SF

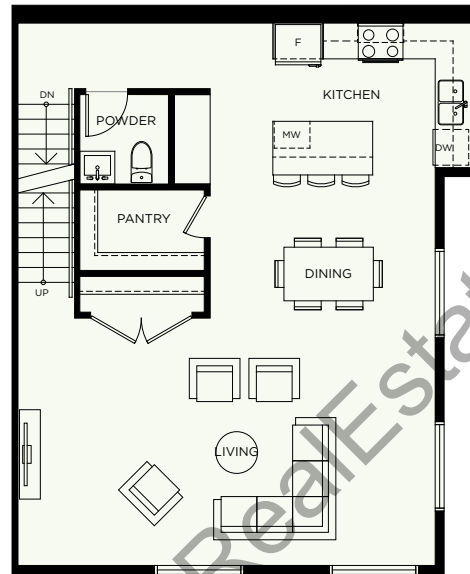


ELWYNN GREEN

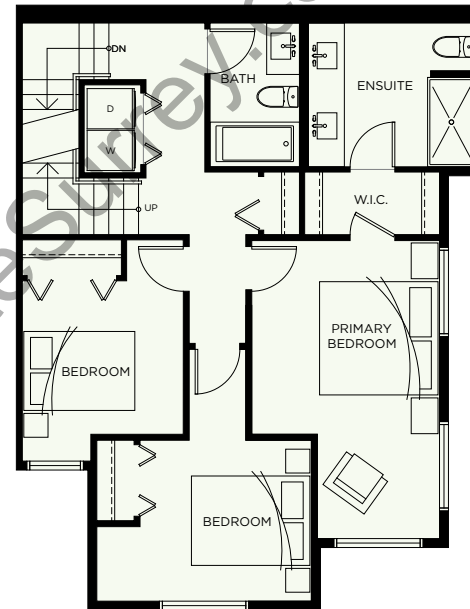
FLEETWOOD



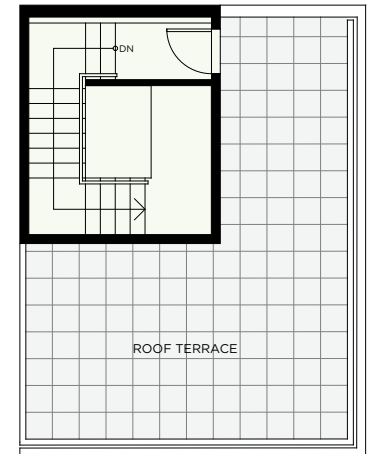
LOWER LEVEL



MAIN LEVEL



UPPER LEVEL



ROOF DECK LEVEL



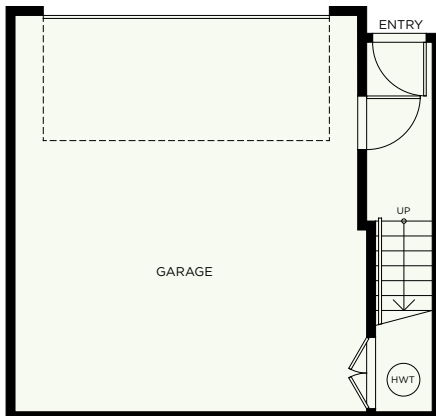
E5

3 BEDROOM
2.5 BATH

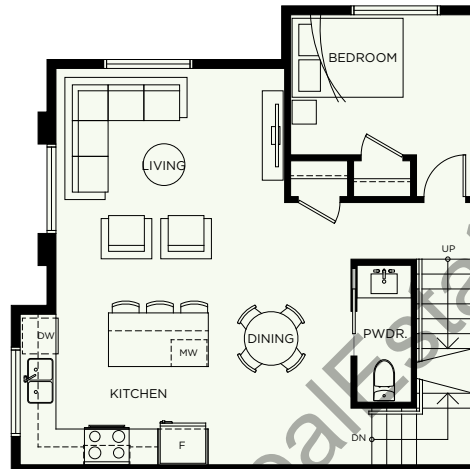
INTERIOR 1,467 SF
ROOFTOP 139 SF
TOTAL 1,606 SF
GARAGE 463 SF



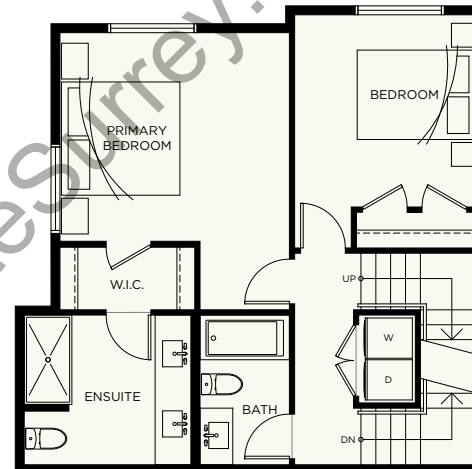
ELWYNN GREEN
FLEETWOOD



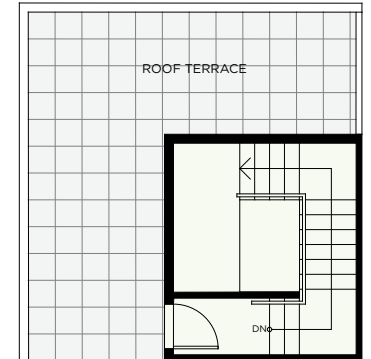
LOWER LEVEL



MAIN LEVEL



UPPER LEVEL



ROOF DECK LEVEL

www.RealtyRateSurrey.com



E6

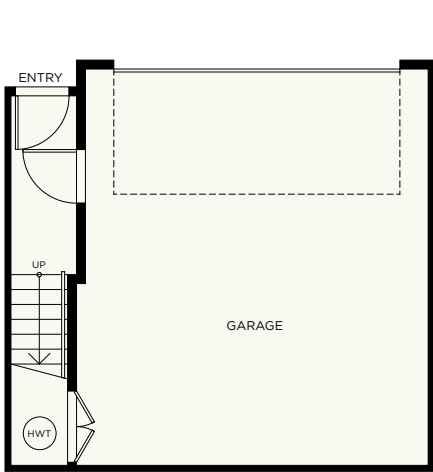
3 BEDROOM
2.5 BATH

INTERIOR 1,422 SF
ROOFTOP 139 SF
TOTAL 1,561 SF
GARAGE 459 SF

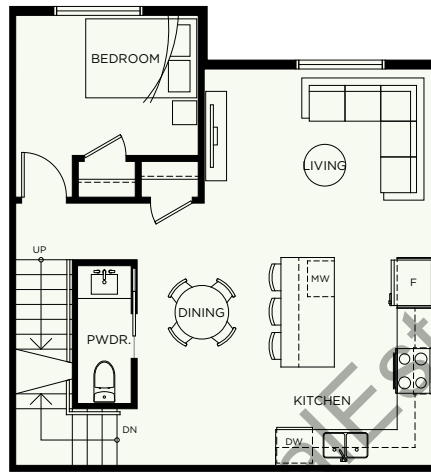


ELWYNN GREEN

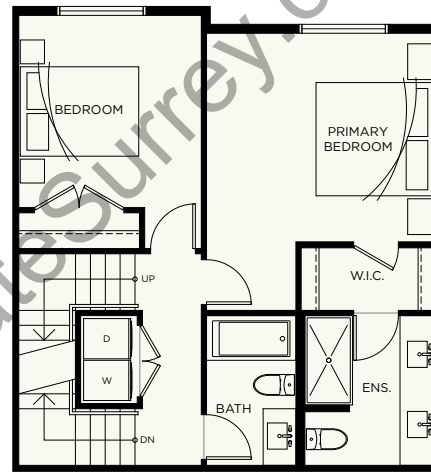
FLEETWOOD



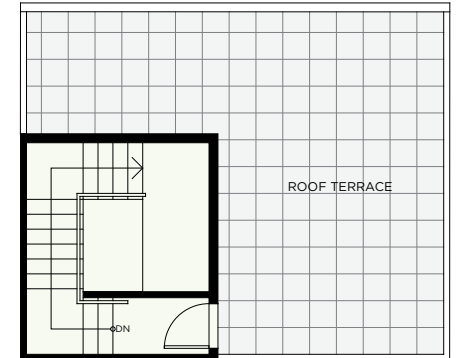
LOWER LEVEL



MAIN LEVEL



UPPER LEVEL



ROOF DECK LEVEL

www.RealtyStateSurrey.com



E7

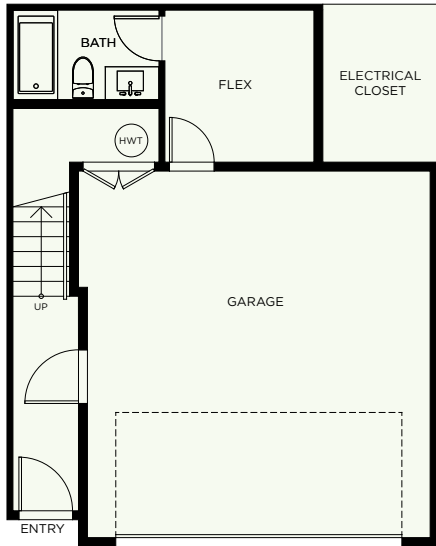
3 BEDROOM
3.5 BATH

INTERIOR 1,931 SF
ROOFTOP 139 SF
TOTAL 2,070 SF
GARAGE 427 SF

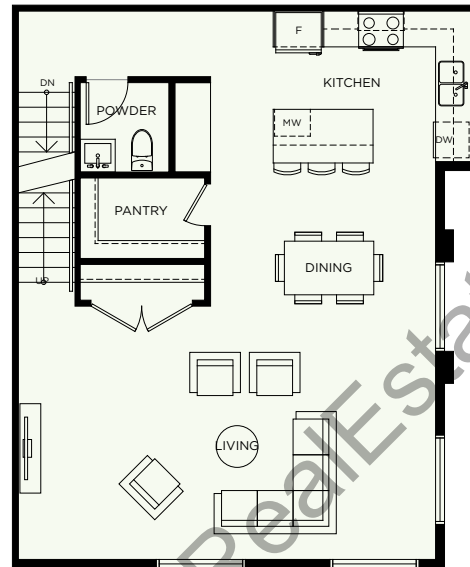


ELWYNN GREEN

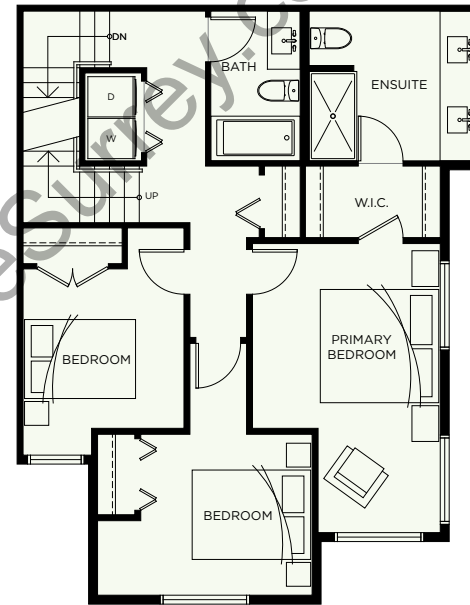
FLEETWOOD



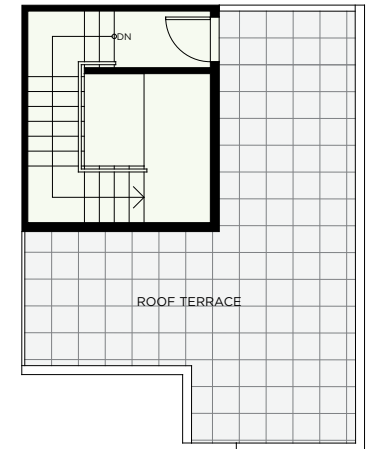
LOWER LEVEL



MAIN LEVEL



UPPER LEVEL



ROOF DECK LEVEL



F

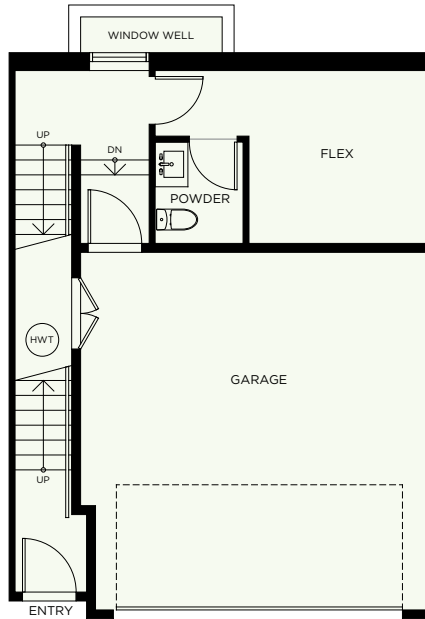
3 BEDROOM + FLEX
3.5 BATH

INTERIOR 1,871 SF
DECK 52 SF
TOTAL 1,923 SF
GARAGE 408 SF

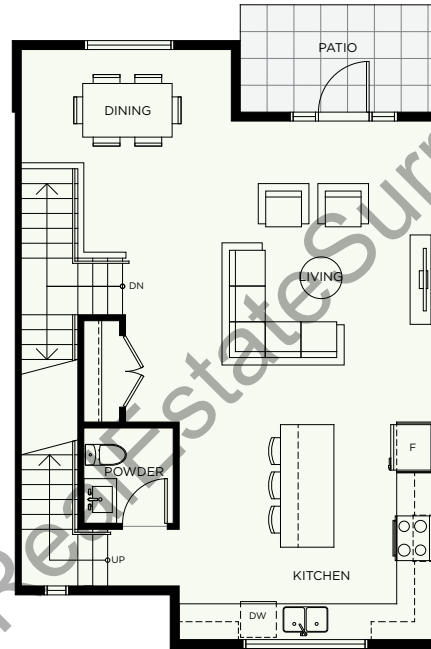


ELWYNN GREEN

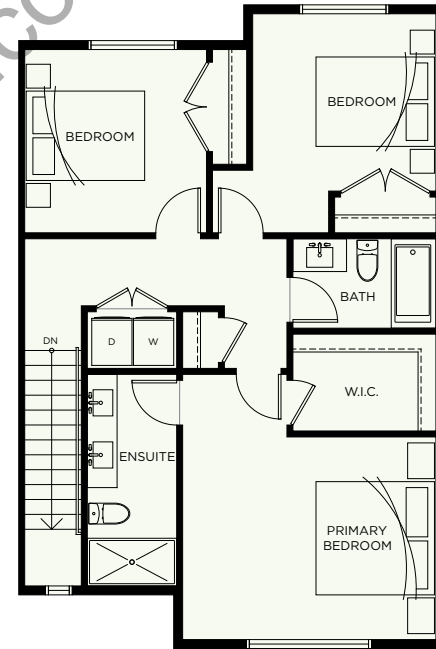
FLEETWOOD



LOWER LEVEL



MAIN LEVEL



UPPER LEVEL



G

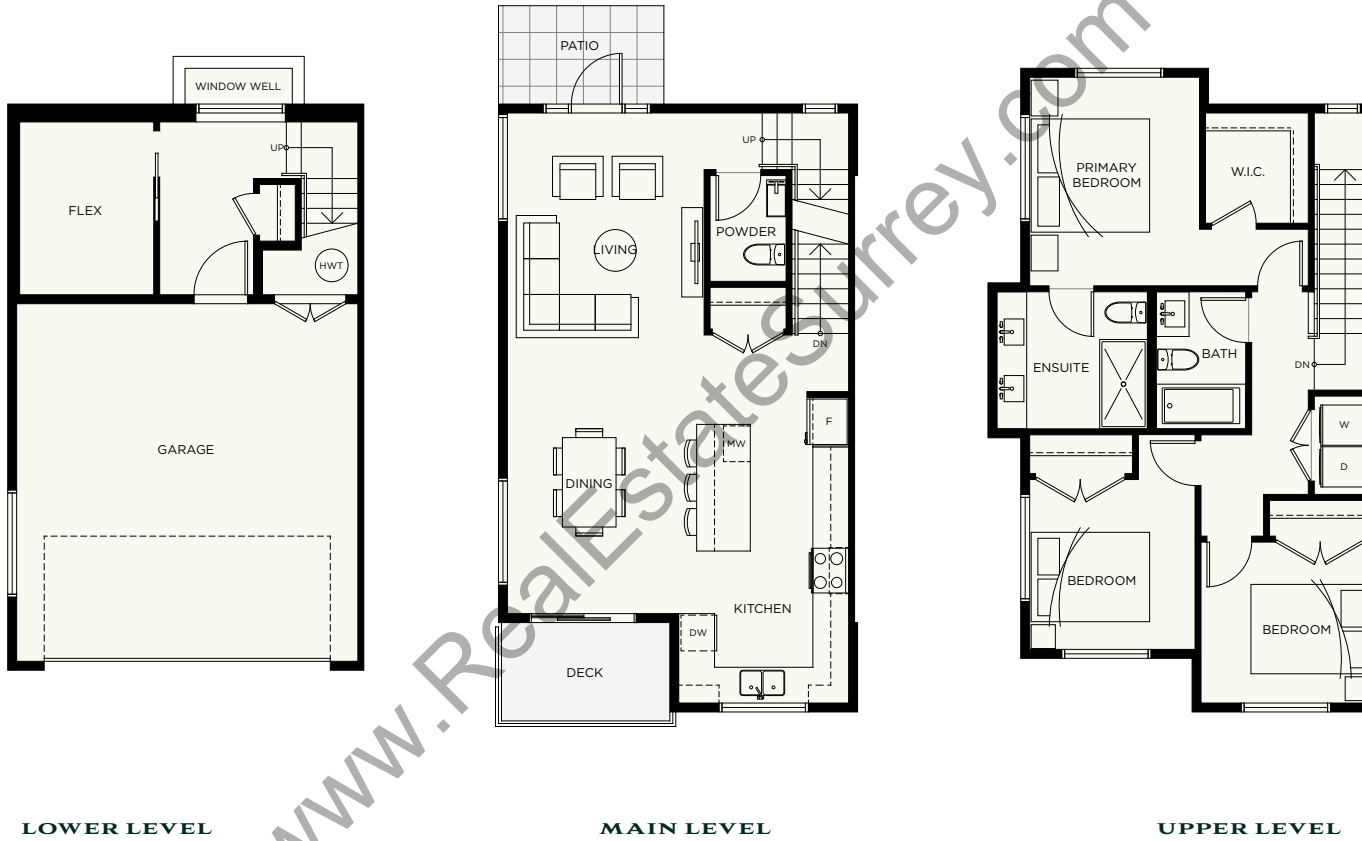
3 BEDROOM + FLEX
2.5 BATH

INTERIOR 1,531 SF
DECK 52 SF (X2)
TOTAL 1,635 SF
GARAGE 413 SF



ELWYNN GREEN

FLEETWOOD



LOWER LEVEL

MAIN LEVEL

UPPER LEVEL



FEATURES AND FINISHES

HIGHLIGHTS

- Spacious, private residences
- Rooftop decks with BBQ's & hot tub support (selected units)
- Fisher & Paykel + SAMSUNG appliance package
- Hot Water on demand
- Built-in security systems
- EV & AC ready
- High efficiency forced air heating
- Central vacuum system

EXTERIORS

- Welcoming streetscape complements exquisite architecturally designed exteriors
- West coast contemporary architecture featuring dramatic roofs, cultured stone, rich wood accents and hardi-plank siding
- Enjoy outdoor living with spacious roof top patios
- Spacious patios have adequate room for both your patio lounge set as well as a large dining table
- Secure and spacious garages for two cars tandem or side-by-side parking with plenty of room for storage
- Scenic walkway
- Surrounded by 3 acres of lush green nature

INTERIORS

- Two-tone cabinets (light and dark)
- High quality laminate flooring
- Contemporary roller blinds throughout
- Stylish black hardware, plumbing & lighting fixtures
- USB outlets in key locations - kitchen island, primary bedroom, ensuite & main bathroom
- RI portable vacuum charging station in laundry closet

INTERIOR SCHEME SELECTIONS

- Monochromatic Dark and Light Schemes
- In each scheme, Scandinavian inspired wood is paired with neutral solid grey color
- Subtle countertops complement the cabinet finishes
- Graphic kitchen backsplash is carried through into the powder room as an accent wall
- Contrasting black hardware and lighting

KITCHENS

- Two-tone cabinets
- Upper cabinets -solid colour, slim shaker profile
- Lower cabinets - timeless wood, modern flat panel
- Waterfall island feature
- Large scale graphic tile backsplash
- Tall accent cabinet with textured glass detail and lighting
- Accent pendant and under-cabinet lighting

LIVING ROOMS

- 60" Linear electric fireplace
- Accent built-in cabinet with textured glass detail (ties in with kitchen)

BEDROOMS

- Black-out roller blinds
- Walk-in closet (primary bedroom)
- Carpet flooring

BATHROOMS (ENSUITE)

- Double vanity with undermount sinks
- Hidden drawer in recessed vanity toe-kick
- Hexagon marble floor tile
- Framed mirrors
- Solid colour slim shaker profile vanity cabinets
- Black hardware, plumbing & lighting fixtures
- Frameless glass shower enclosure

ROOFTOPS

- Full-sized roof-top patio extends your living space and provides a perfect place to entertain
- Rooftops are hottub ready
- Convenient gas hookup for the BBQ

MECHANICAL FEATURES

- Ample parking for guests
- HRV fan system that draws fresh outside air and living area air to be distributed to each bedroom
- Air conditioning roughed in
- On-demand hot water tank
- Quality Assurance Homes' Customer Care Program
- Hard-wired smoke and carbon monoxide detectors
- New Home Warranty coverage

Home Warranty that includes:

- 2 Year Material & Labour Warranty
- 5 Year Building Envelope Warranty
- 10 Year Structural Defects Warranty