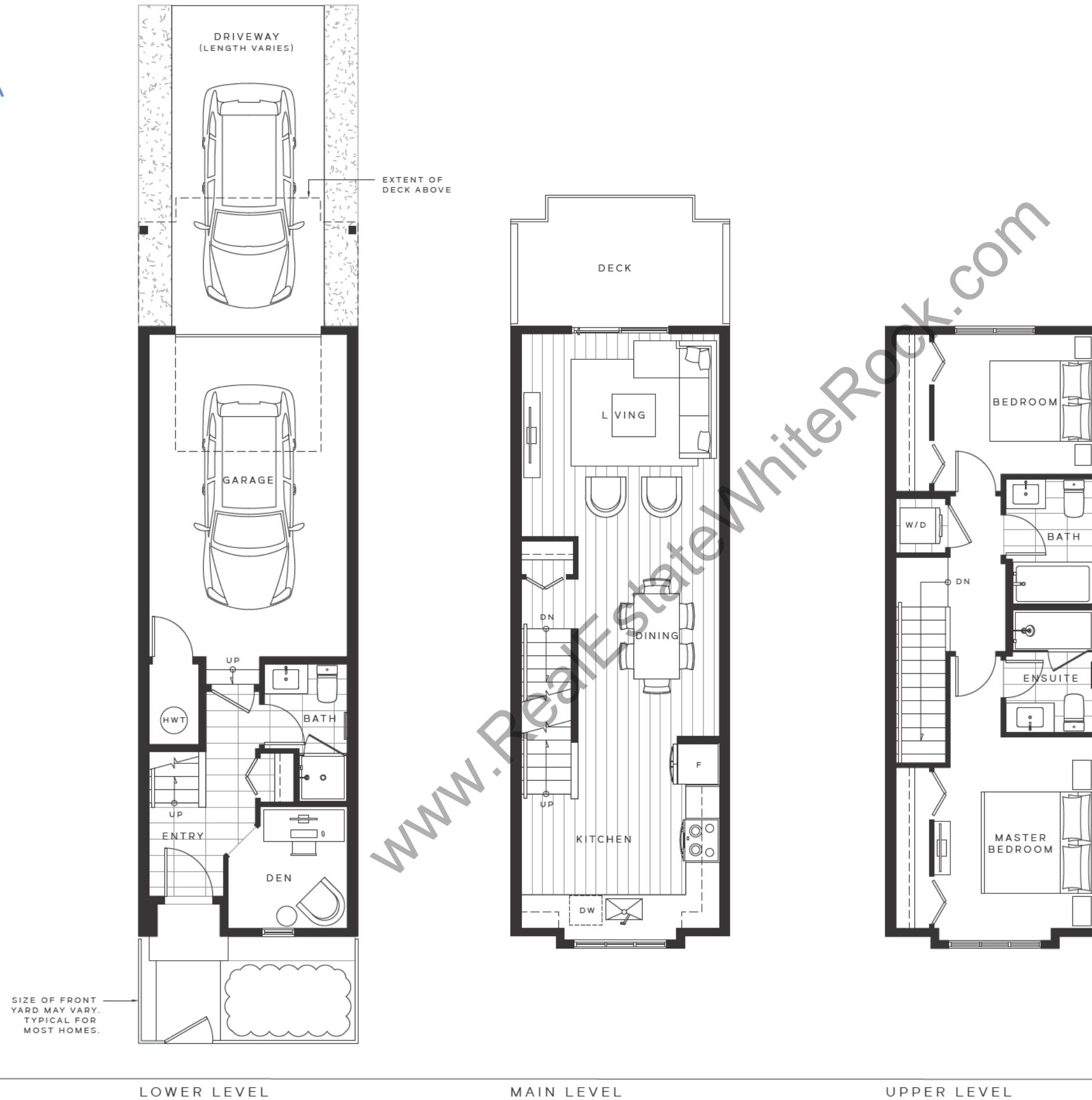


Plan A

TOWNHOME
2 BED + DEN + 3 BATH
INTERIOR 1,184 sq. ft.

wood & water
By Anthem



LOWER LEVEL

MAIN LEVEL

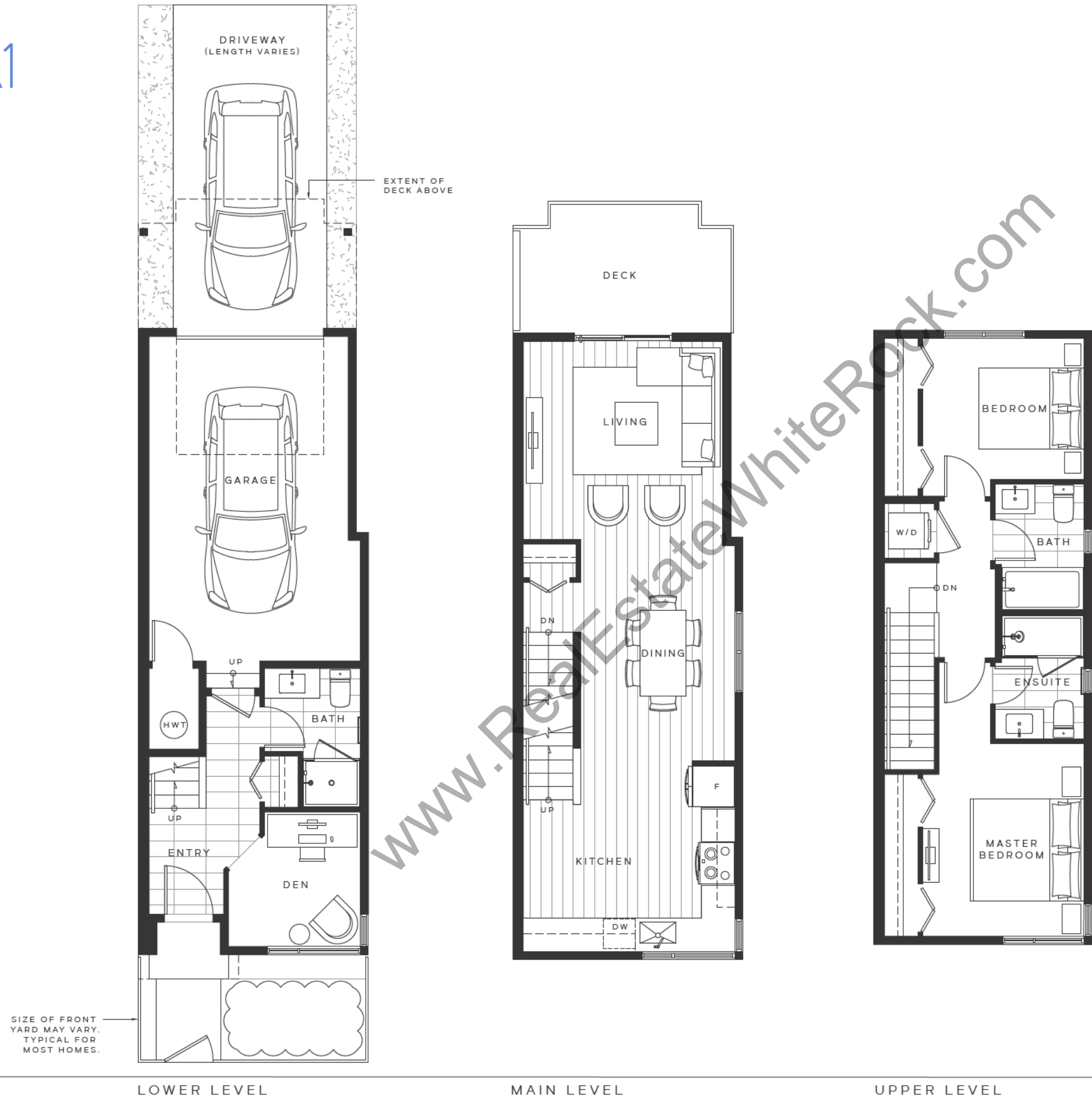
UPPER LEVEL

The developer reserves the right to make changes and modifications to the information contained herein. Floorplans and floorplates are subject to change without notice. Please contact a developer sales representative for details. The developer may also make such further development modifications as are permitted by the disclosure statement, as may be amended, the contract of purchase and sale between a purchaser and developer (if applicable), or otherwise. E & O.E.

Plan A1

TOWNHOME
2 BED + DEN + 3 BATH
INTERIOR 1,249 sq. ft.

wood & water
By Anthem



SIZE OF FRONT YARD MAY VARY. TYPICAL FOR MOST HOMES.

LOWER LEVEL

MAIN LEVEL

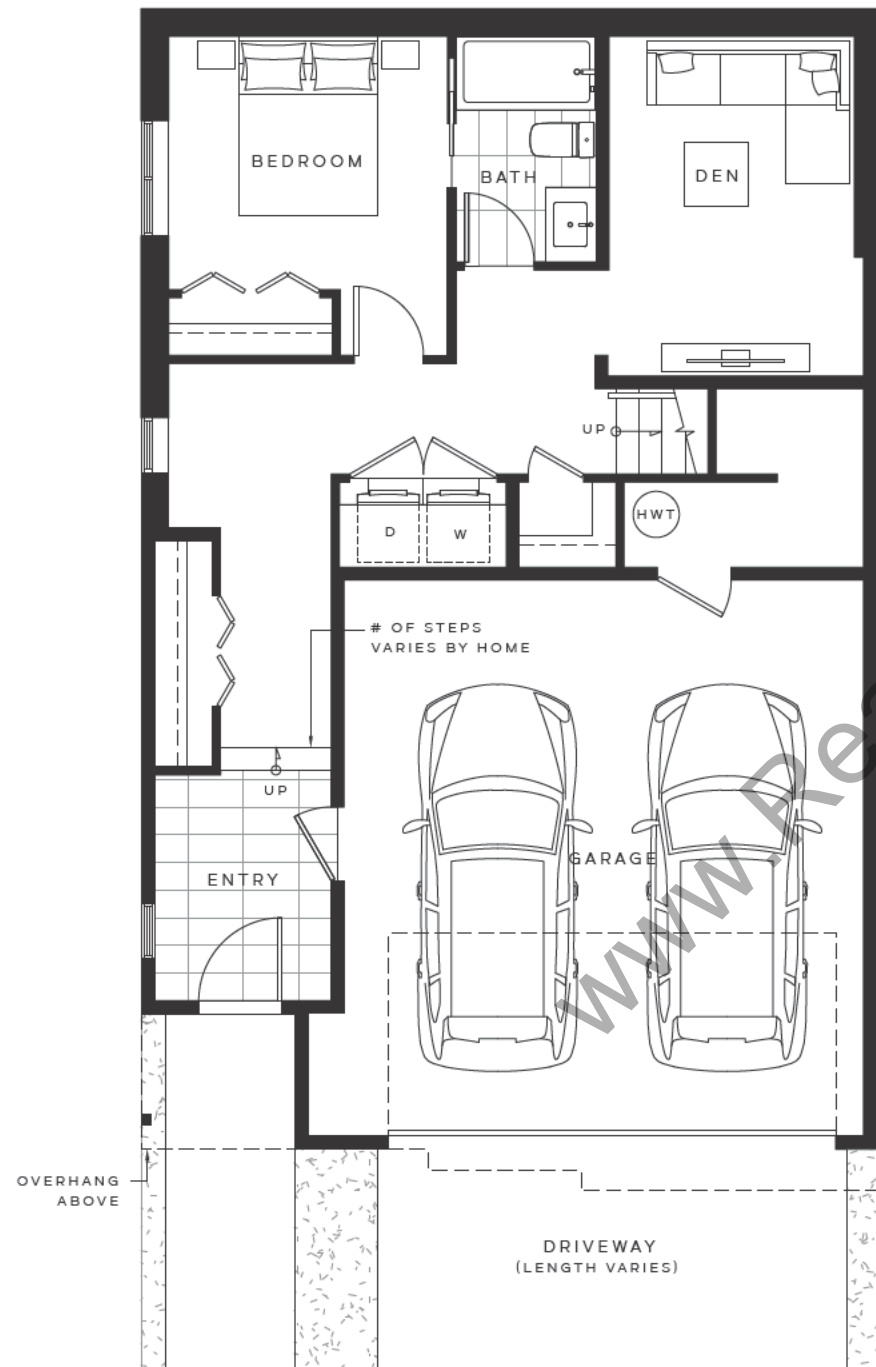
UPPER LEVEL

The developer reserves the right to make changes and modifications to the information contained herein. Floorplans and floorplates are subject to change without notice. Please contact a developer sales representative for details. The developer may also make such further development modifications as are permitted by the disclosure statement, as may be amended, the contract of purchase and sale between a purchaser and developer (if applicable), or otherwise. E & O.E.

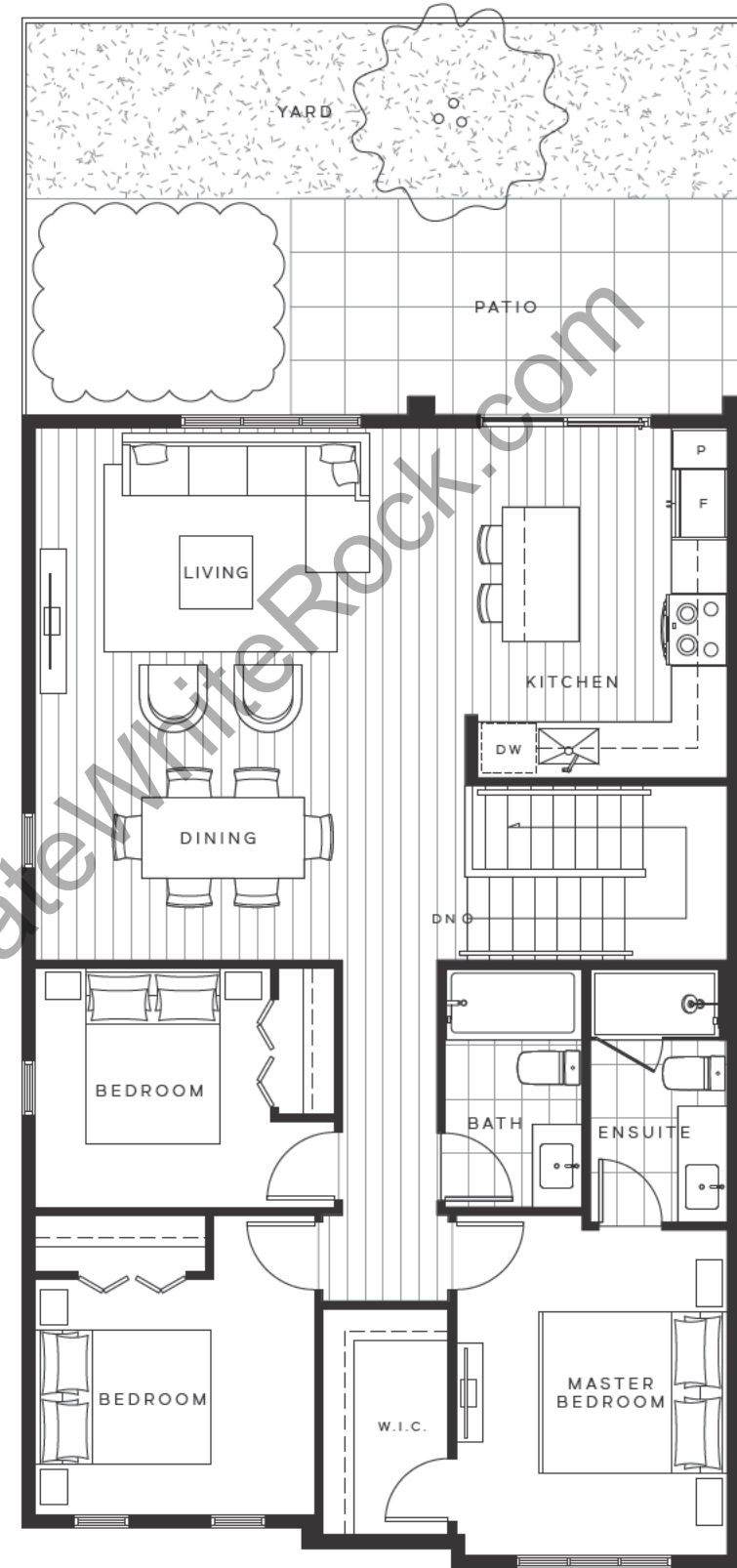
Plan D2

DUPLEX
4 BED + DEN + 3 BATH
INTERIOR 1,701 sq. ft.

wood & water
By Anthem



LOWER LEVEL



UPPER LEVEL

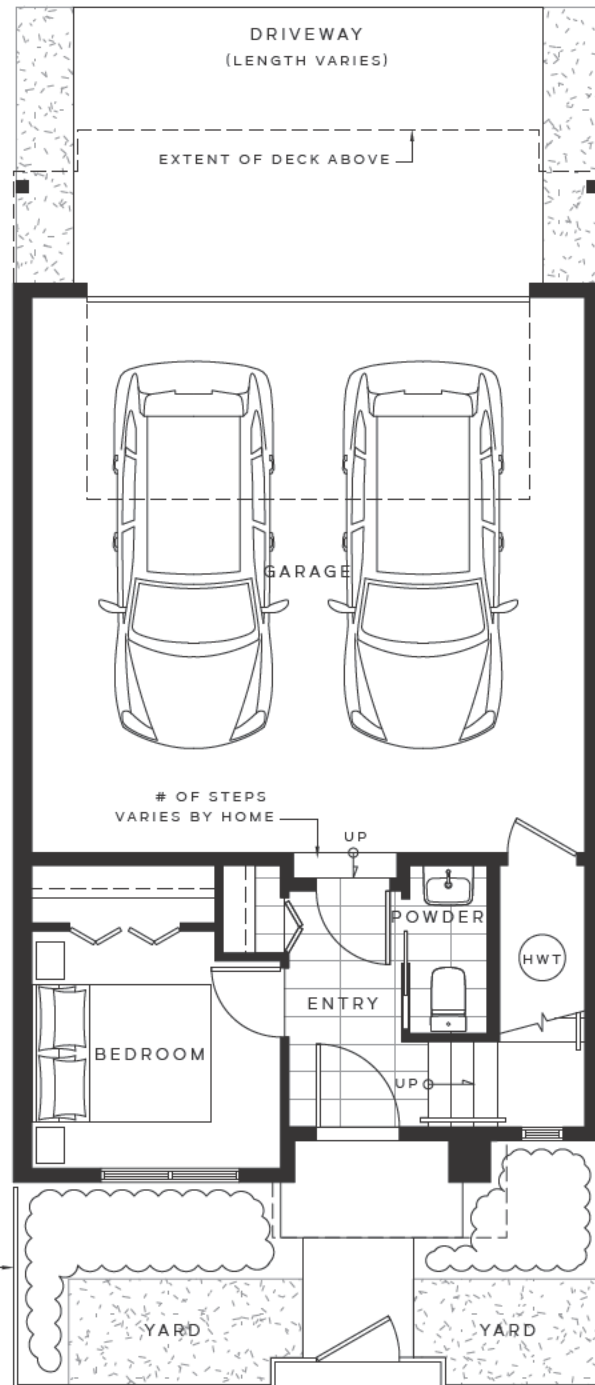
SIZE OF FRONT
YARD MAY VARY.
TYPICAL FOR
MOST HOMES.

The developer reserves the right to make changes and modifications to the information contained herein. Floorplans and floorplates are subject to change without notice. Please contact a developer sales representative for details. The developer may also make such further development modifications as are permitted by the disclosure statement, as may be amended, the contract of purchase and sale between a purchaser and developer (if applicable), or otherwise. E & O.E.

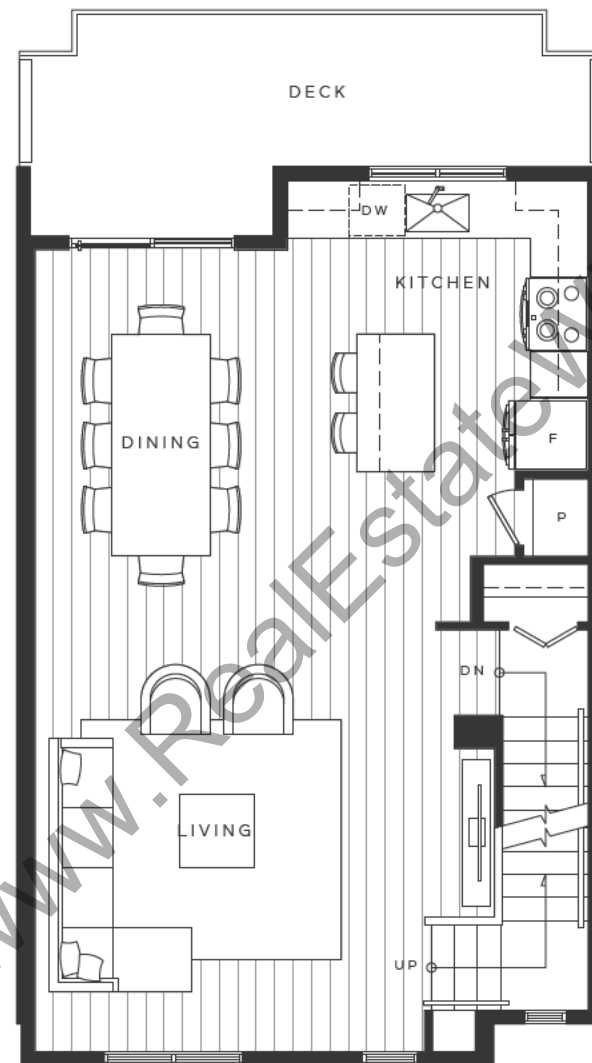
Plan E

TOWNHOME
4 BED + 2.5 BATH
INTERIOR 1,475 sq. ft.

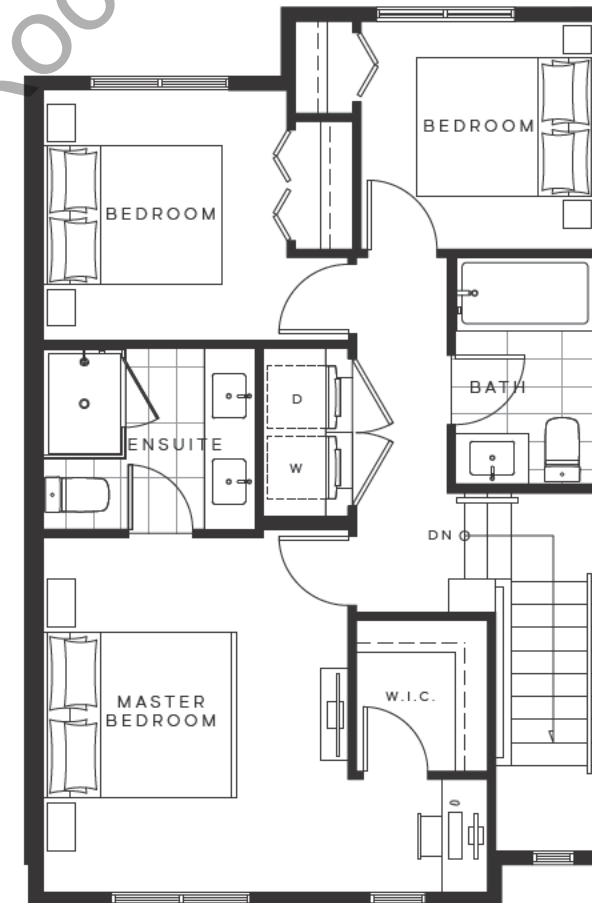
wood & water
By Anthem



LOWER LEVEL



MAIN LEVEL



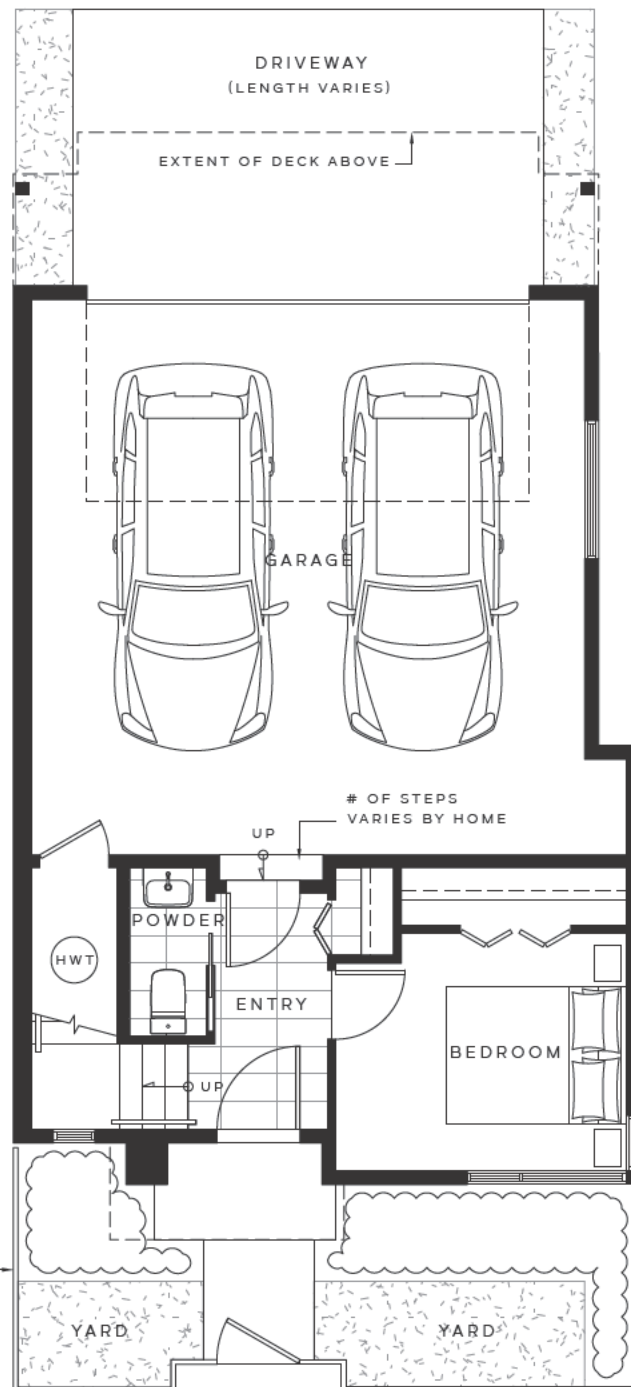
UPPER LEVEL

The developer reserves the right to make changes and modifications to the information contained herein. Floorplans and floorplates are subject to change without notice. Please contact a developer sales representative for details. The developer may also make such further development modifications as are permitted by the disclosure statement, as may be amended, the contract of purchase and sale between a purchaser and developer (if applicable), or otherwise. E & O.E.

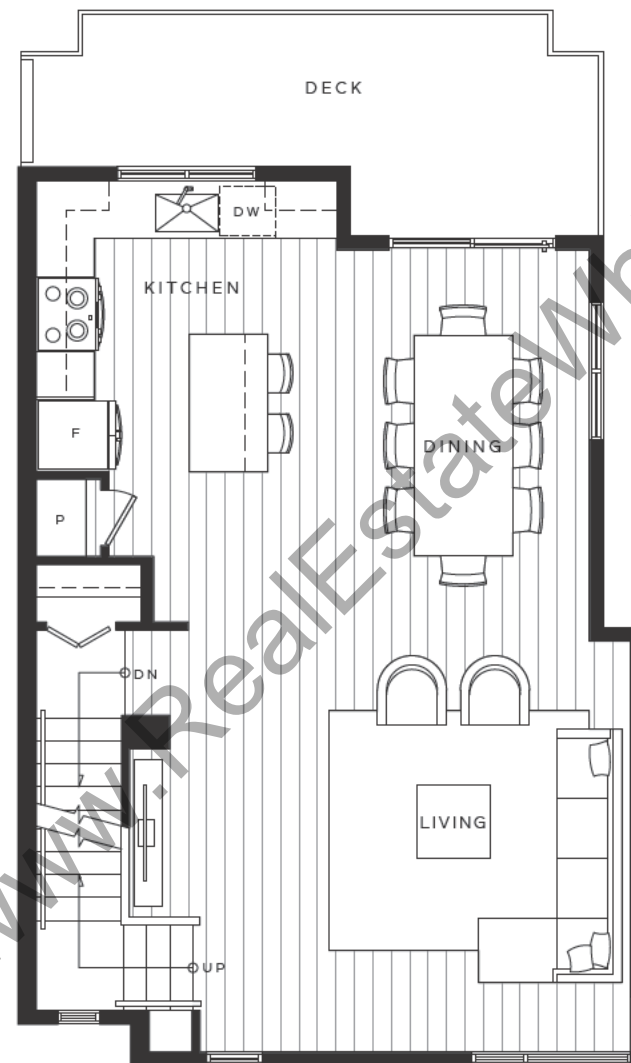
Plan E1

TOWNHOME
4 BED + 2.5 BATH
INTERIOR 1,507 sq. ft.

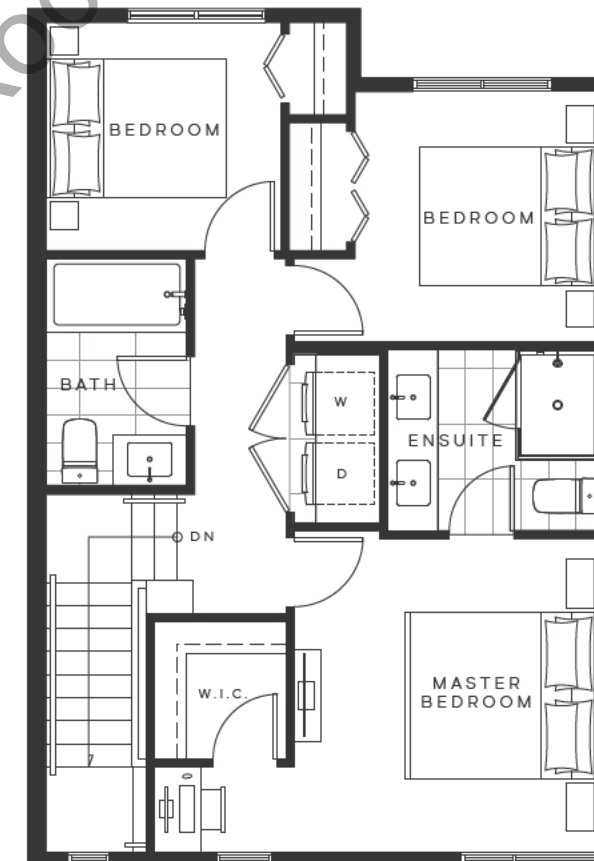
wood & water
By Anthem



LOWER LEVEL



MAIN LEVEL



UPPER LEVEL

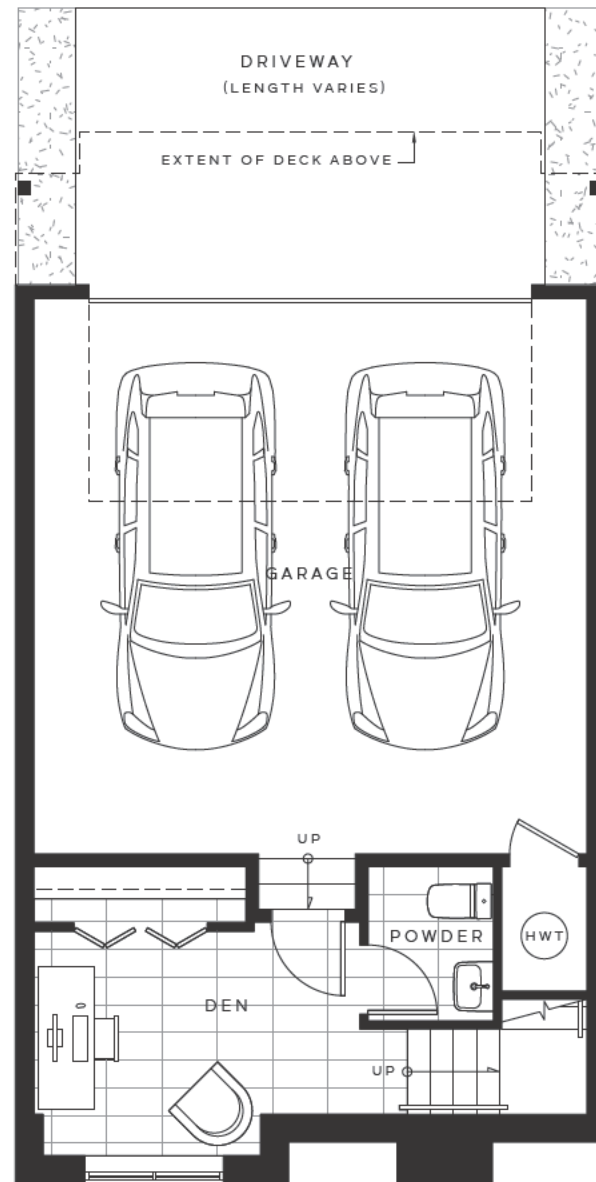
The developer reserves the right to make changes and modifications to the information contained herein. Floorplans and floorplates are subject to change without notice. Please contact a developer sales representative for details. The developer may also make such further development modifications as are permitted by the disclosure statement, as may be amended, the contract of purchase and sale between a purchaser and developer (if applicable), or otherwise. E & O.E.

Plan G

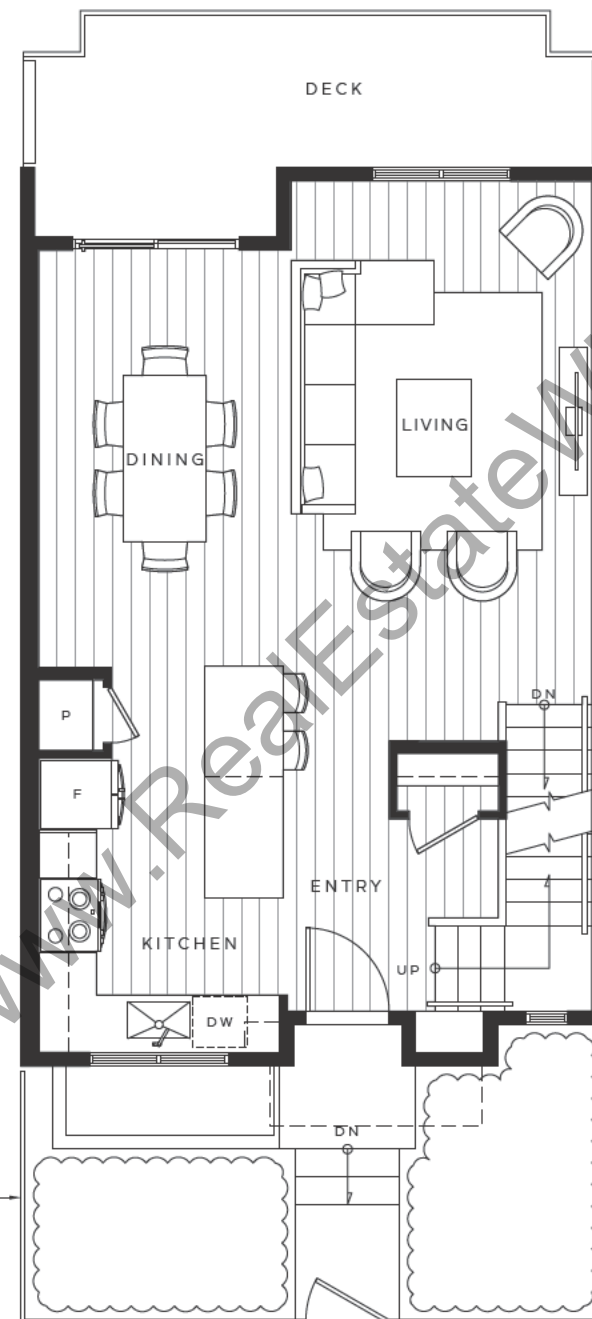
TOWNHOME
3 BED + DEN + 2.5 BATH
INTERIOR 1,464 sq. ft.

wood & water

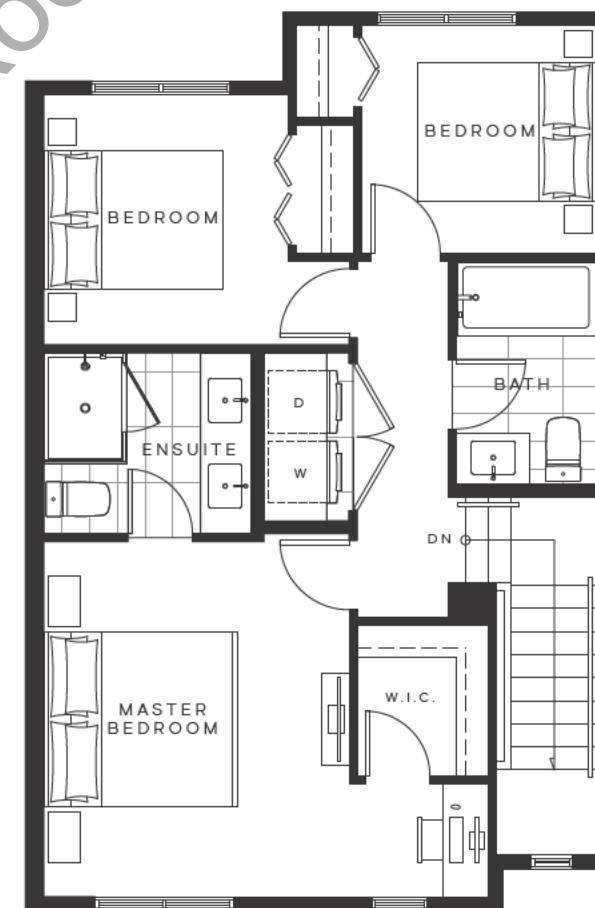
By Anthem



LOWER LEVEL



MAIN LEVEL



UPPER LEVEL

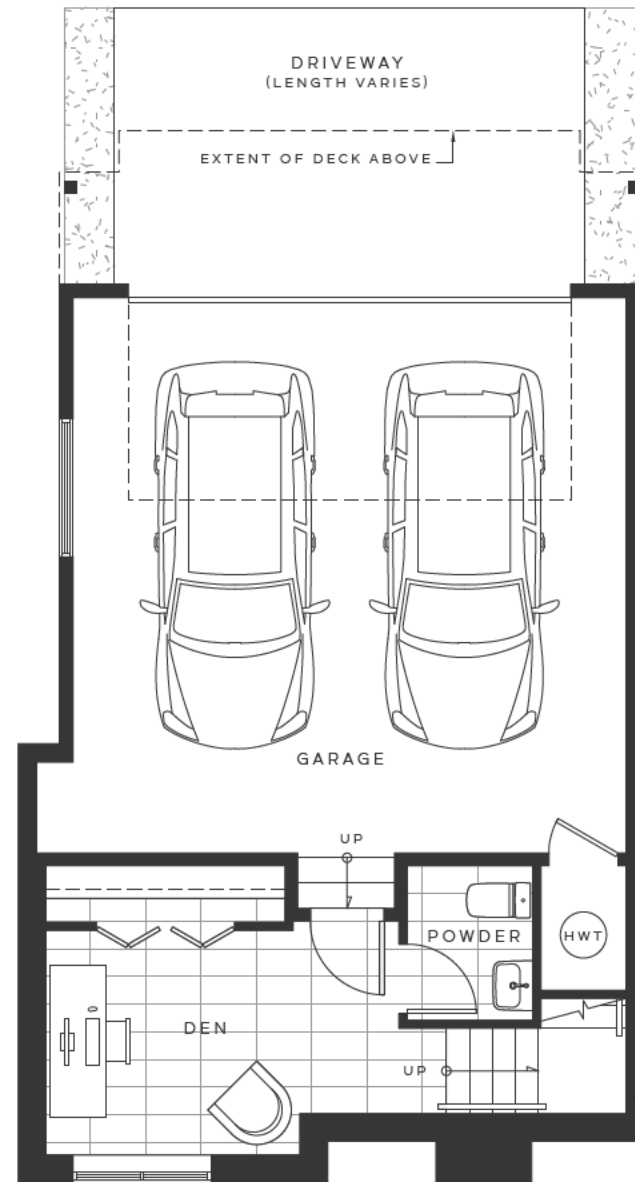
SIZE OF FRONT YARD MAY VARY. TYPICAL FOR MOST HOMES.

The developer reserves the right to make changes and modifications to the information contained herein. Floorplans and floorplates are subject to change without notice. Please contact a developer sales representative for details. The developer may also make such further development modifications as are permitted by the disclosure statement, as may be amended, the contract of purchase and sale between a purchaser and developer (if applicable), or otherwise. E & O.E.

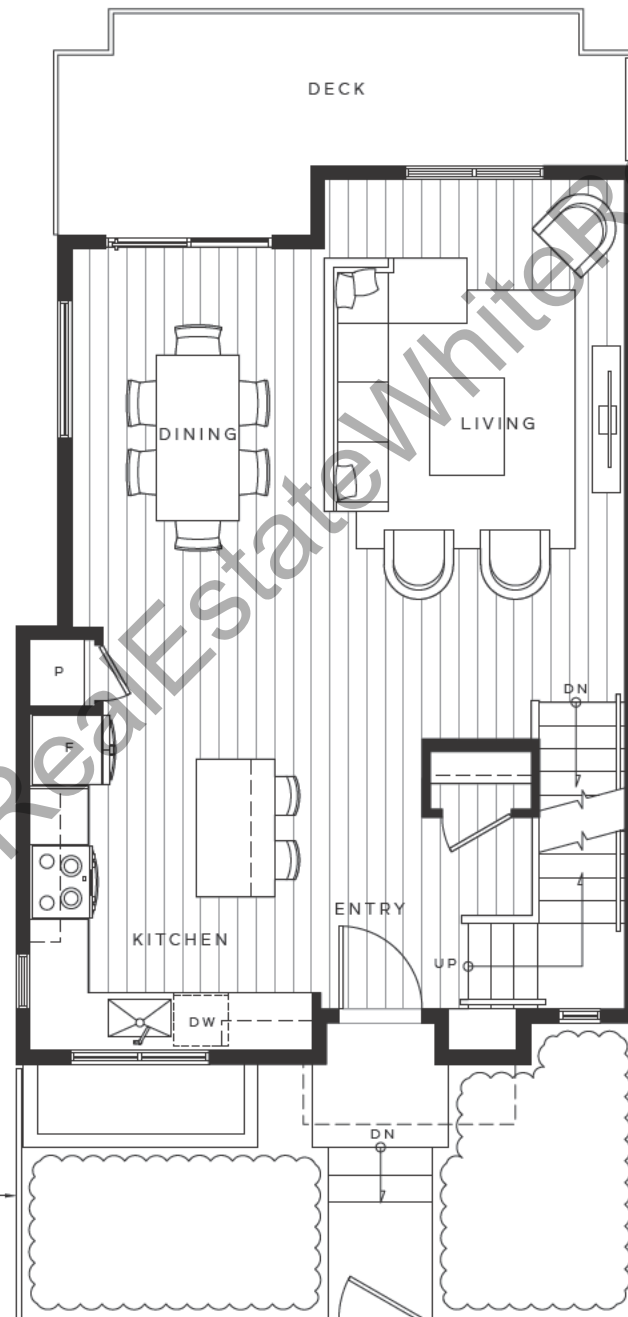
Plan G1

TOWNHOME
3 BED + DEN + 2.5 BATH
INTERIOR 1,496 sq. ft.

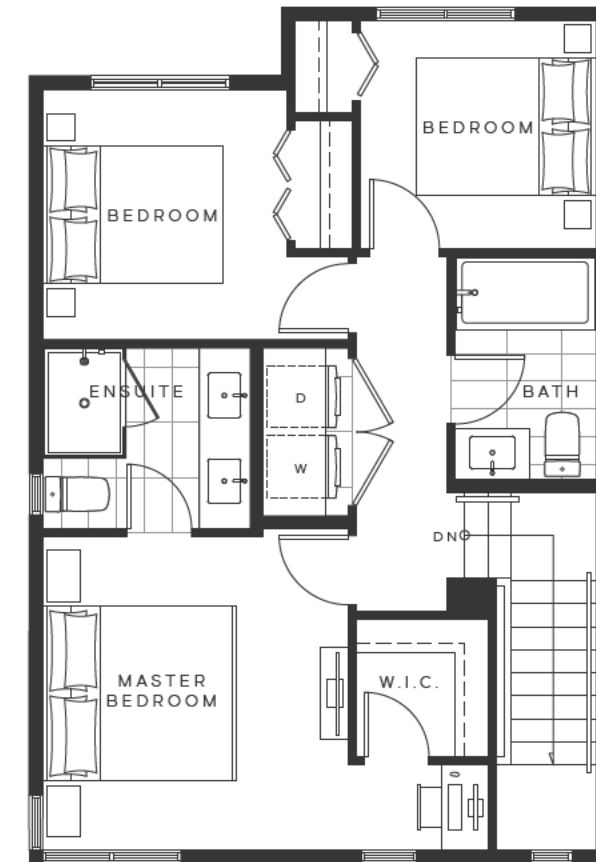
wood & water
By Anthem



LOWER LEVEL



MAIN LEVEL



UPPER LEVEL

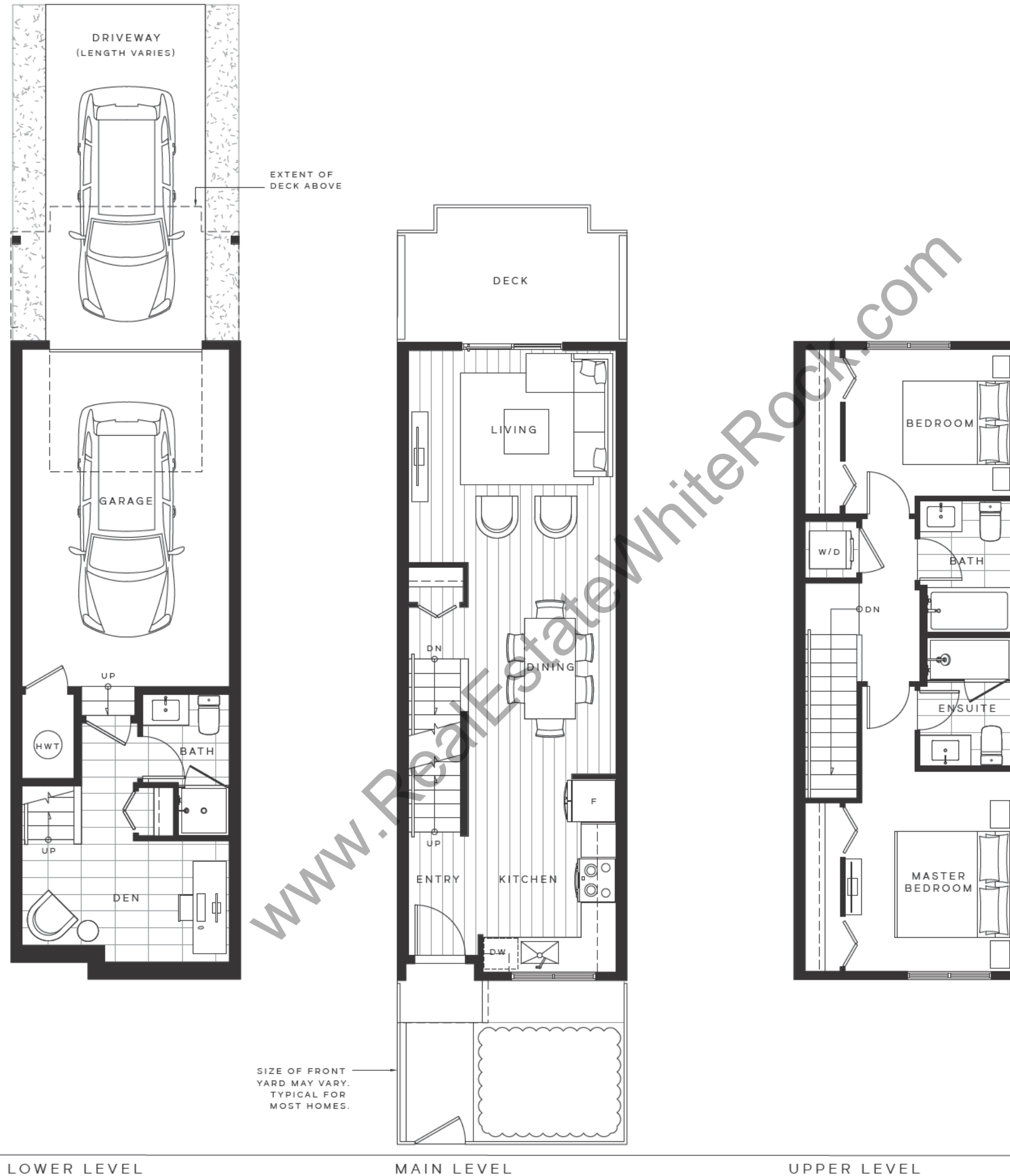
SIZE OF FRONT YARD MAY VARY. TYPICAL FOR MOST HOMES.

The developer reserves the right to make changes and modifications to the information contained herein. Floorplans and floorplates are subject to change without notice. Please contact a developer sales representative for details. The developer may also make such further development modifications as are permitted by the disclosure statement, as may be amended, the contract of purchase and sale between a purchaser and developer (if applicable), or otherwise. E & O.E.

Plan H

TOWNHOME
2 BED + DEN + 3 BATH
INTERIOR 1,173 sq. ft.

wood & water
By Anthem



LOWER LEVEL

MAIN LEVEL

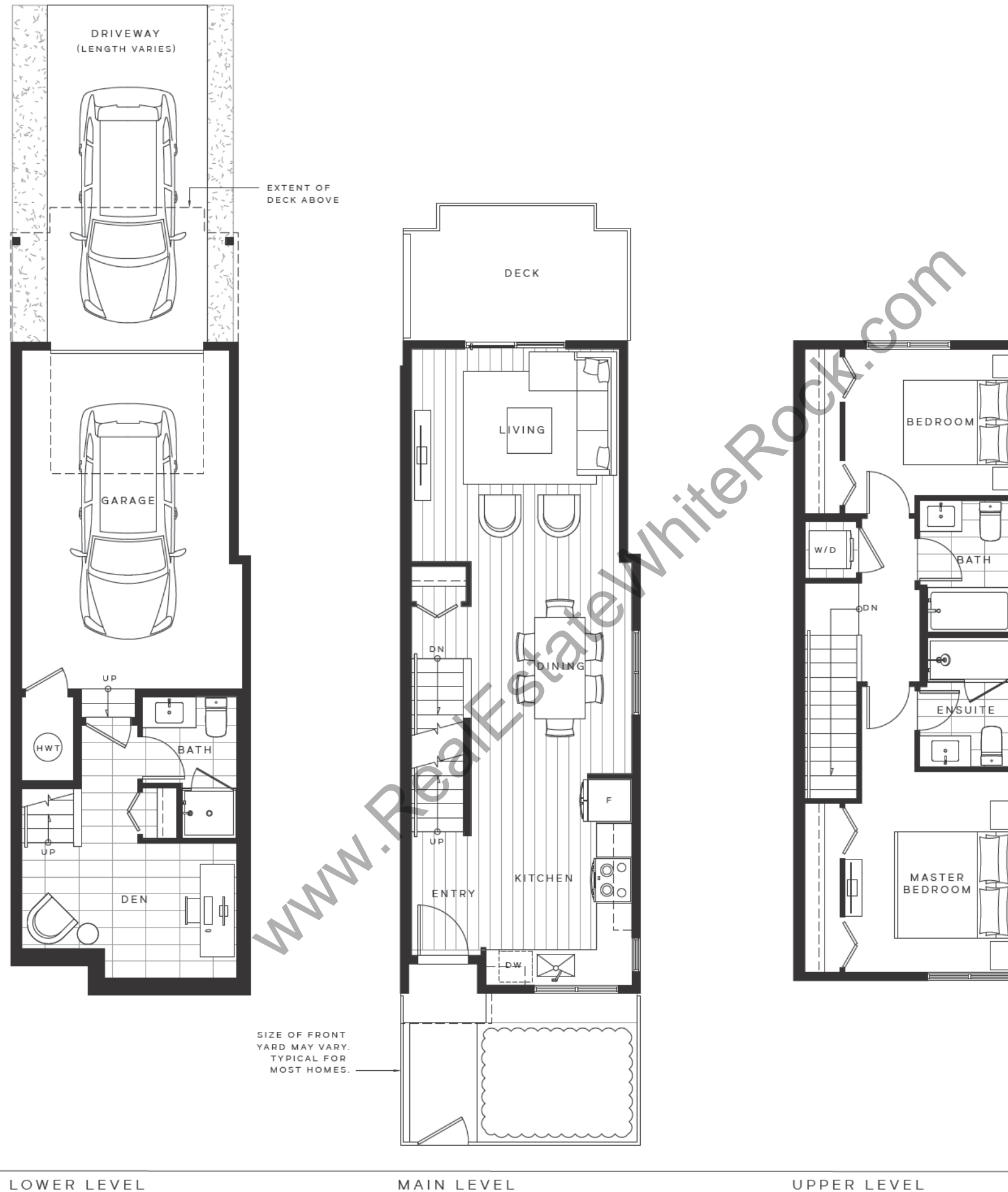
UPPER LEVEL

The developer reserves the right to make changes and modifications to the information contained herein. Floorplans and floorplates are subject to change without notice. Please contact a developer sales representative for details. The developer may also make such further development modifications as are permitted by the disclosure statement, as may be amended, the contract of purchase and sale between a purchaser and developer (if applicable), or otherwise. E & OE.

Plan H1

TOWNHOME
2 BED + DEN + 3 BATH
INTERIOR 1,238 sq. ft.

wood & water
By Anthem



LOWER LEVEL

MAIN LEVEL

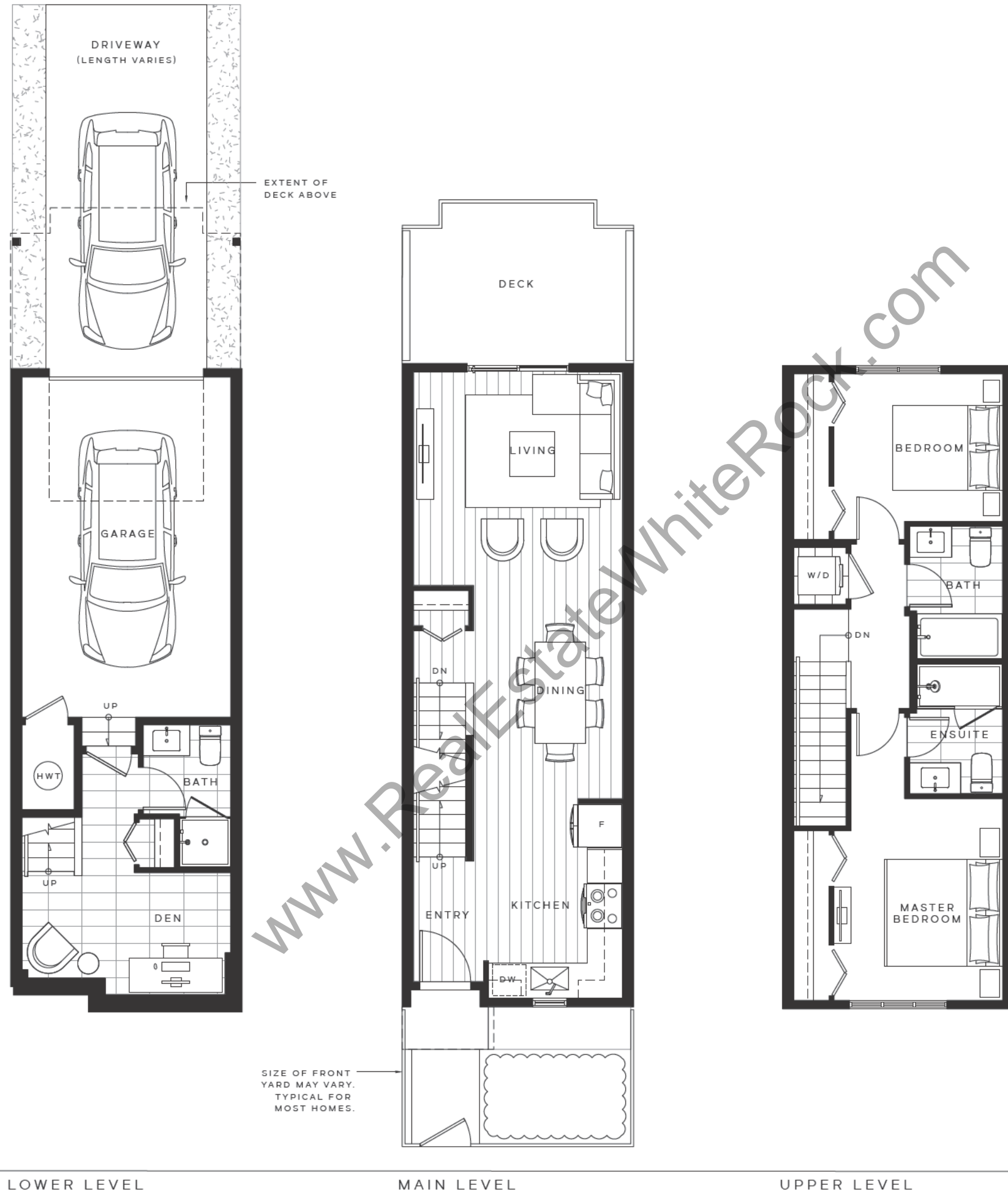
UPPER LEVEL

The developer reserves the right to make changes and modifications to the information contained herein. Floorplans and floorplates are subject to change without notice. Please contact a developer sales representative for details. The developer may also make such further development modifications as are permitted by the disclosure statement, as may be amended, the contract of purchase and sale between a purchaser and developer (if applicable), or otherwise. E & O.E.

Plan H2

TOWNHOME
2 BED + DEN + 3 BATH
INTERIOR 1,184 sq. ft.

wood & water
By Anthem



LOWER LEVEL

MAIN LEVEL

UPPER LEVEL

The developer reserves the right to make changes and modifications to the information contained herein. Floorplans and floorplates are subject to change without notice. Please contact a developer sales representative for details. The developer may also make such further development modifications as are permitted by the disclosure statement, as may be amended, the contract of purchase and sale between a purchaser and developer (if applicable), or otherwise. E & O.E.

Plan J

TOWNHOME
4 BED + DEN + 3 BATH
INTERIOR 1,593 sq. ft.

wood & water
By Anthem



LOWER LEVEL

MAIN LEVEL

UPPER LEVEL

The developer reserves the right to make changes and modifications to the information contained herein. Floorplans and floorplates are subject to change without notice. Please contact a developer sales representative for details. The developer may also make such further development modifications as are permitted by the disclosure statement, as may be amended, the contract of purchase and sale between a purchaser and developer (if applicable), or otherwise. E & O.E.

Plan J1

TOWNHOME
4 BED + DEN + 3 BATH
INTERIOR 1,615 sq. ft.

wood & water
By Anthem



LOWER LEVEL

MAIN LEVEL

UPPER LEVEL

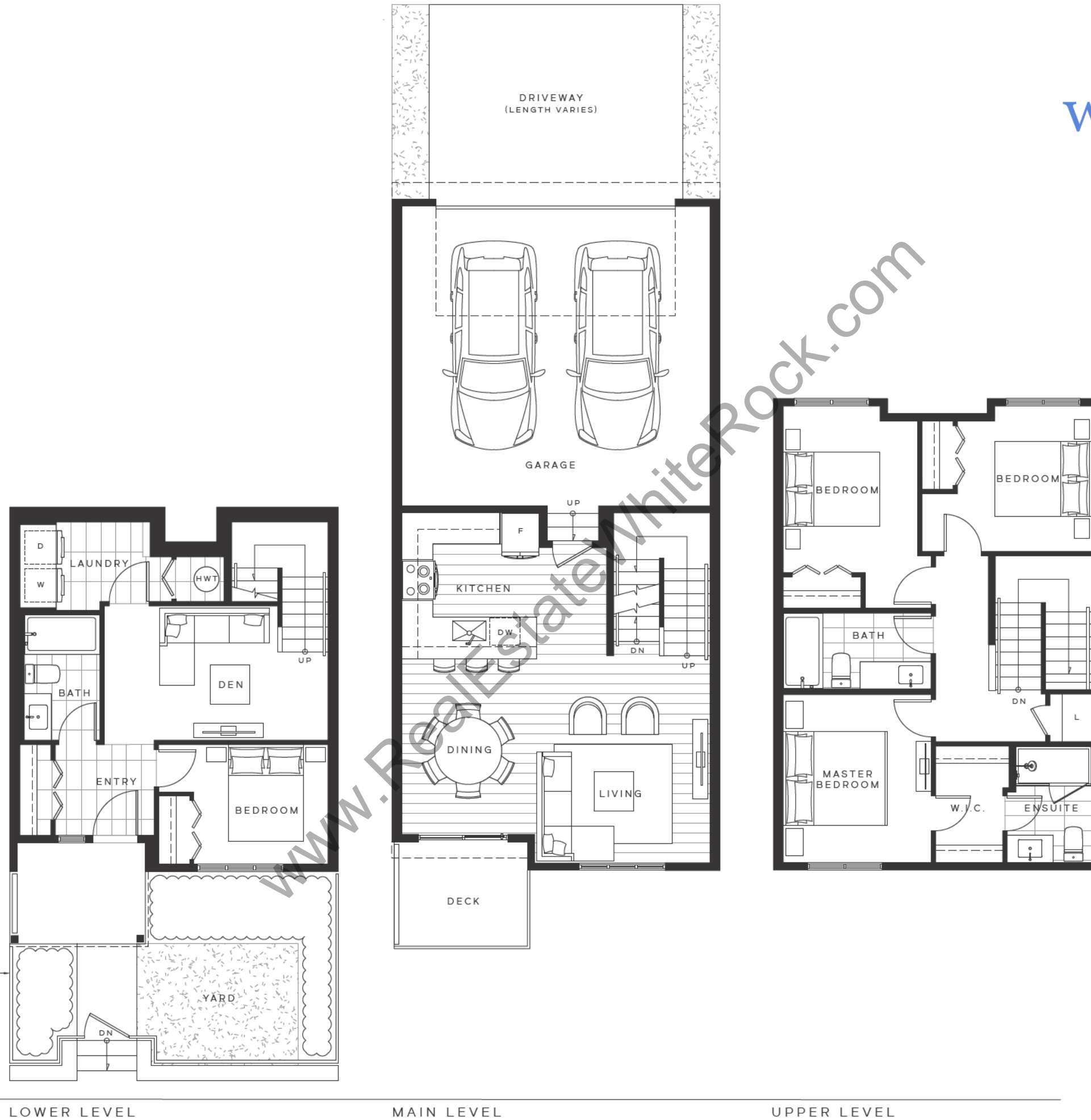
The developer reserves the right to make changes and modifications to the information contained herein. Floorplans and floorplates are subject to change without notice. Please contact a developer sales representative for details. The developer may also make such further development modifications as are permitted by the disclosure statement, as may be amended, the contract of purchase and sale between a purchaser and developer (if applicable), or otherwise. E & O.E.

Plan K

TOWNHOME
4 BED + DEN + 3 BATH
INTERIOR 1,593 sq. ft.

wood & water
By Anthem

SIZE OF FRONT
YARD MAY VARY.
TYPICAL FOR
MOST HOMES.



LOWER LEVEL

MAIN LEVEL

UPPER LEVEL

The developer reserves the right to make changes and modifications to the information contained herein. Floorplans and floorplates are subject to change without notice. Please contact a developer sales representative for details. The developer may also make such further development modifications as are permitted by the disclosure statement, as may be amended, the contract of purchase and sale between a purchaser and developer (if applicable), or otherwise. E & O.E.

Plan K1

TOWNHOME
4 BED + DEN + 3 BATH
INTERIOR 1,615 sq. ft.

wood & water
By Anthem



LOWER LEVEL

MAIN LEVEL

UPPER LEVEL

The developer reserves the right to make changes and modifications to the information contained herein. Floorplans and floorplates are subject to change without notice. Please contact a developer sales representative for details. The developer may also make such further development modifications as are permitted by the disclosure statement, as may be amended, the contract of purchase and sale between a purchaser and developer (if applicable), or otherwise. E & O.E.