

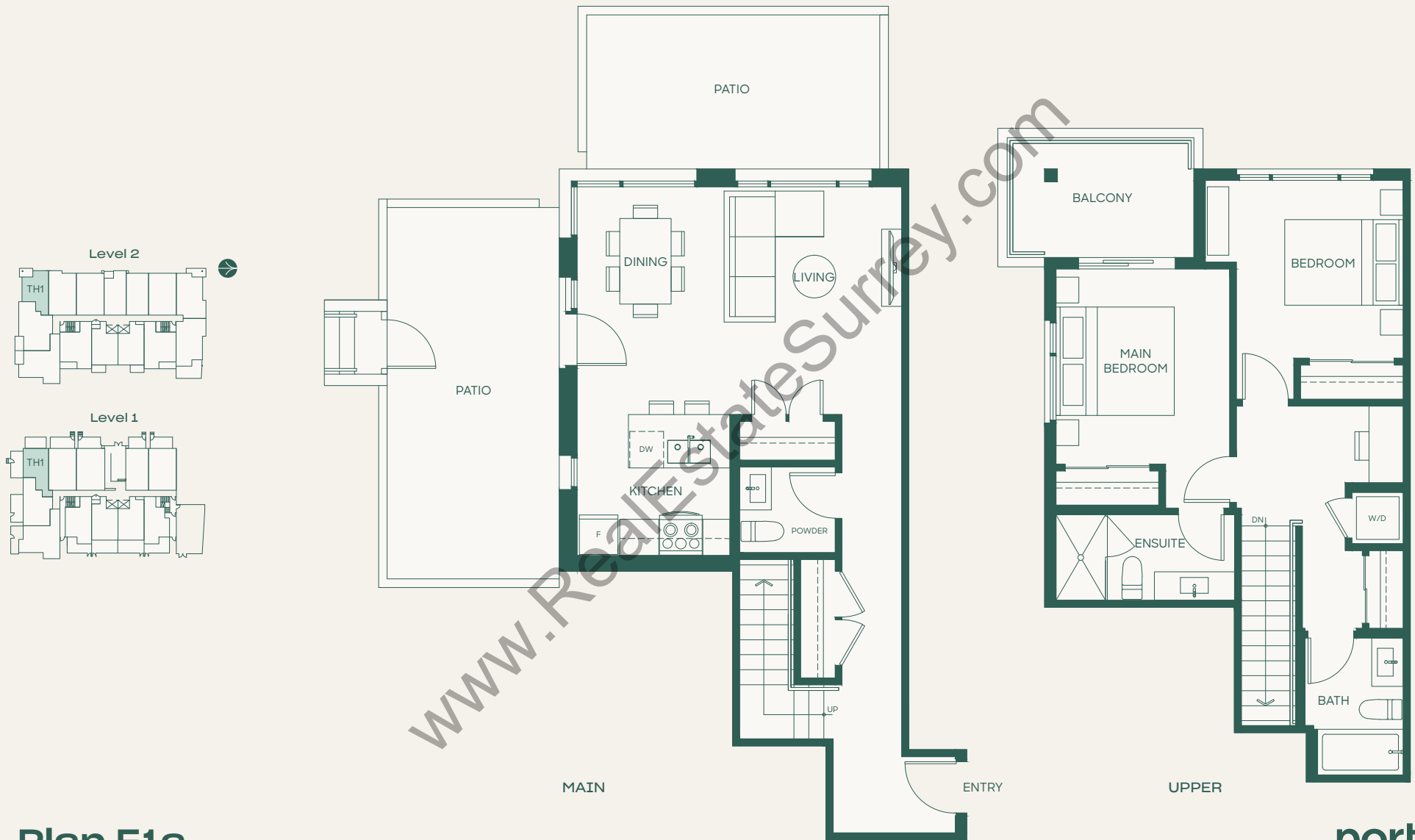
## Plan F

2 Bed + Flex + 3 Bath

Interior: 1203 SF • Exterior: 139 SF

Total: 1342 SF

In order to maintain a high standard for our homes, the developer reserves the right to modify specifications, plans or materials without notice. Images and/or renderings (and possible upgrades) may not be an exact representation of the finished buildings. Interior and exterior sizes are approximate and are subject to change. Renderings are artist's concept only. This is not an offering for sale, any such offering can only be made with a Disclosure Statement. E.&O.E.



## Plan F1a

2 Bed + 2.5 Bath

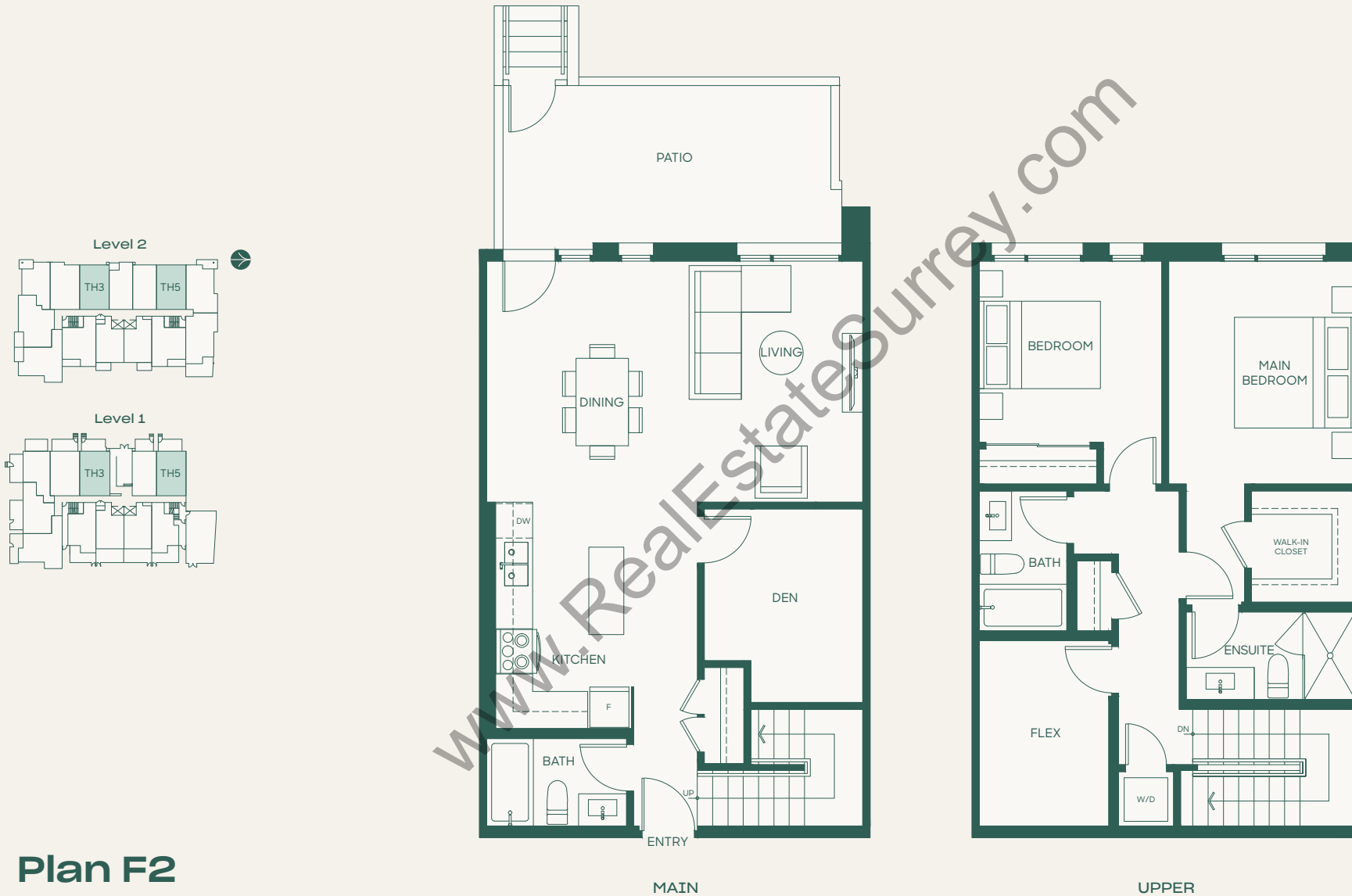
Interior: 1213 SF • Exterior: 172 SF

Total: 1385 SF

**porte**<sup>1</sup>  
homes

[porte.ca/Hartley](https://porte.ca/Hartley)

In order to maintain a high standard for our homes, the developer reserves the right to modify specifications, plans or materials without notice. Images and/or renderings (and possible upgrades) may not be an exact representation of the finished buildings. Interior and exterior sizes are approximate and are subject to change. Renderings are artist's concept only. This is not an offering for sale, any such offering can only be made with a Disclosure Statement. E.&O.E.

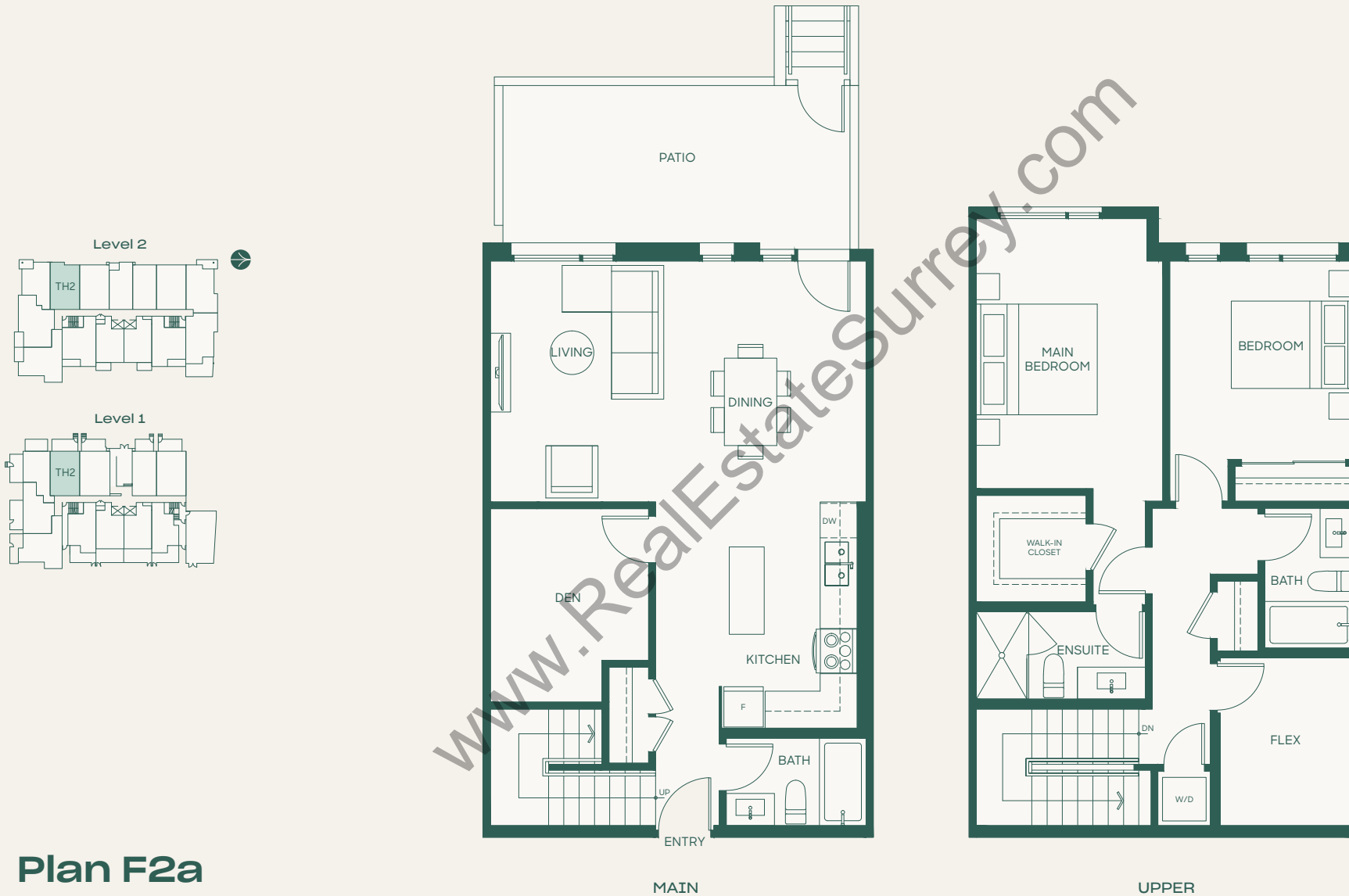


## Plan F2

2 Bed + Den + Flex + 3 Bath

Interior: 1503 SF • Exterior: 174-185 SF

Total: 1677-1688 SF



## Plan F2a

2 Bed + Den + Flex + 3 Bath

Interior: 1530 SF • Exterior: 200 SF

Total: 1730 SF