

georgetown 2

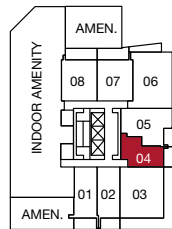
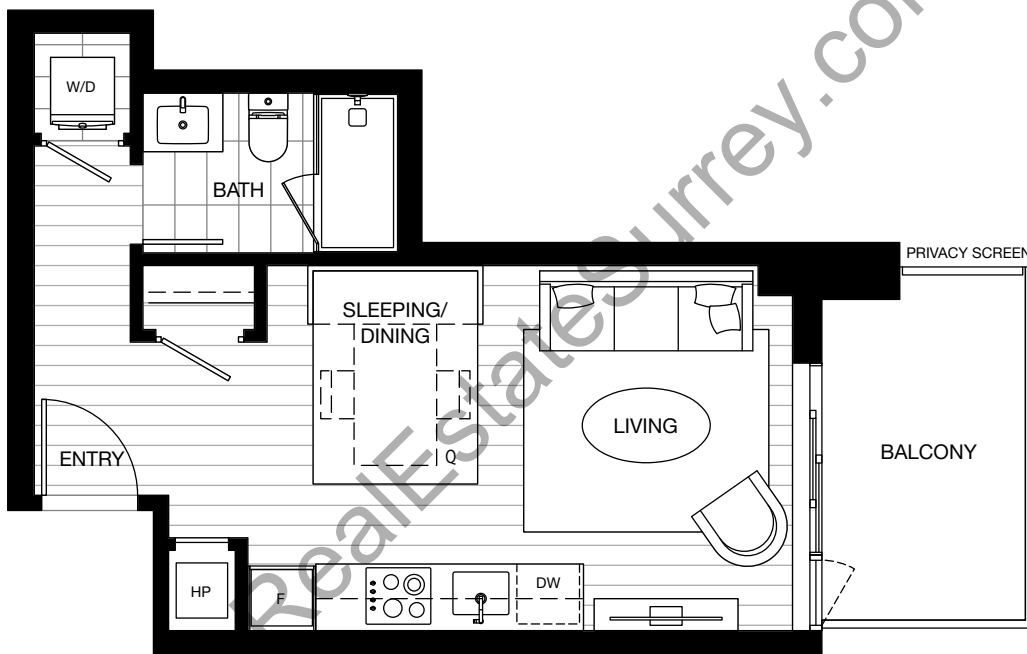
a plan

studio

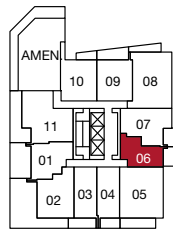
indoor: 363-364 sq ft

outdoor: 75-78 sq ft

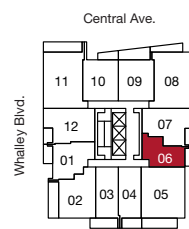
total: 438-442 sq ft



level 2



level 3



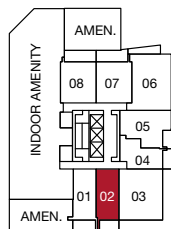
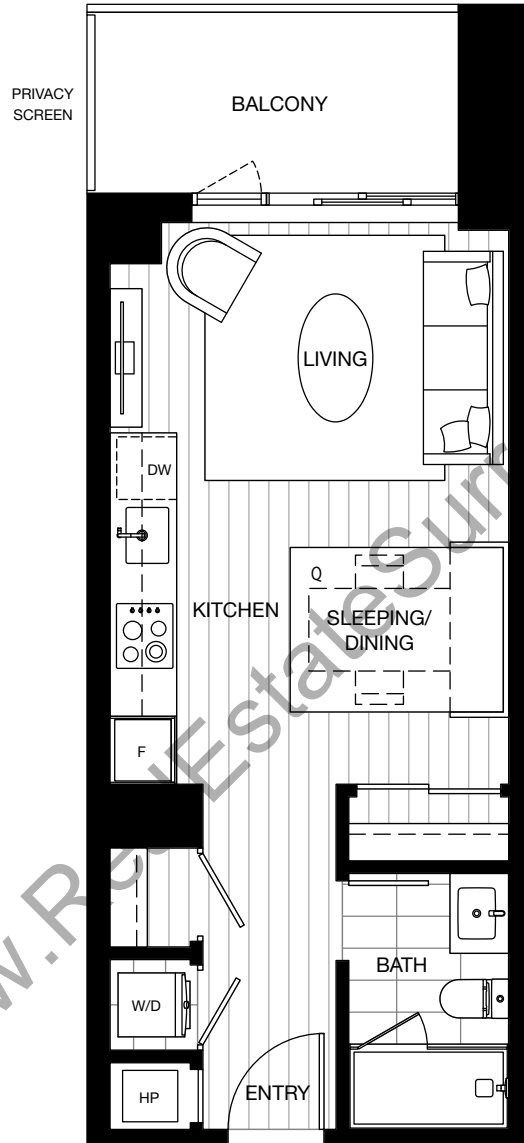
levels 4-31



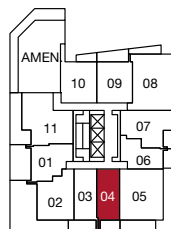
The developer reserves the right to make changes and modifications to the information contained herein. Floorplans and floorplates are subject to change without notice. Please contact a developer sales representative for details. This is not an offering for sale, as an offering can only be made after the filing of a disclosure statement, and only in jurisdictions where qualified in accordance with applicable local laws. E.&O.E.

studio

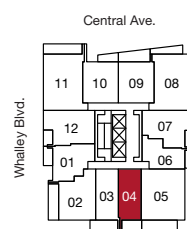
indoor: 399 sq ft
 outdoor: 62-83 sq ft
 total: 461-482 sq ft



level 2



level 3



levels 4-31



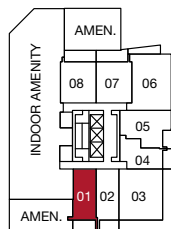
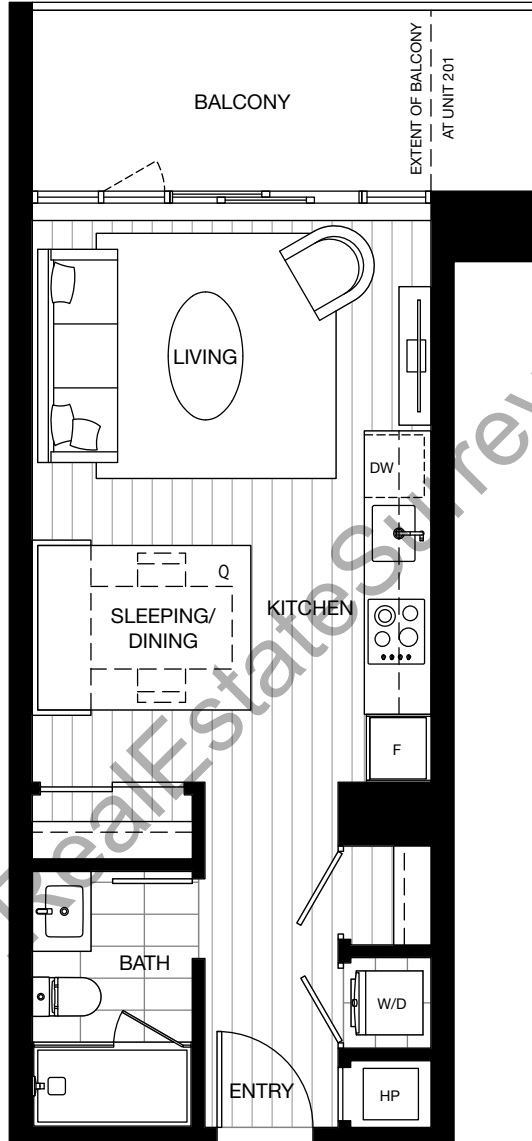
The developer reserves the right to make changes and modifications to the information contained herein. Floorplans and floorplates are subject to change without notice. Please contact a developer sales representative for details. This is not an offering for sale, as an offering can only be made after the filing of a disclosure statement, and only in jurisdictions where qualified in accordance with applicable local laws. E.&O.E.

studio

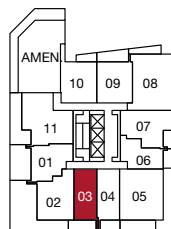
indoor: 399-410 sq ft

outdoor: 77-86 sq ft

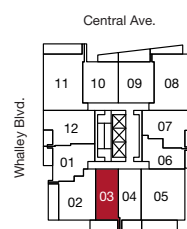
total: 476-496 sq ft



level 2



level 3



levels 4-31



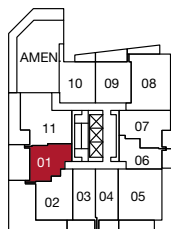
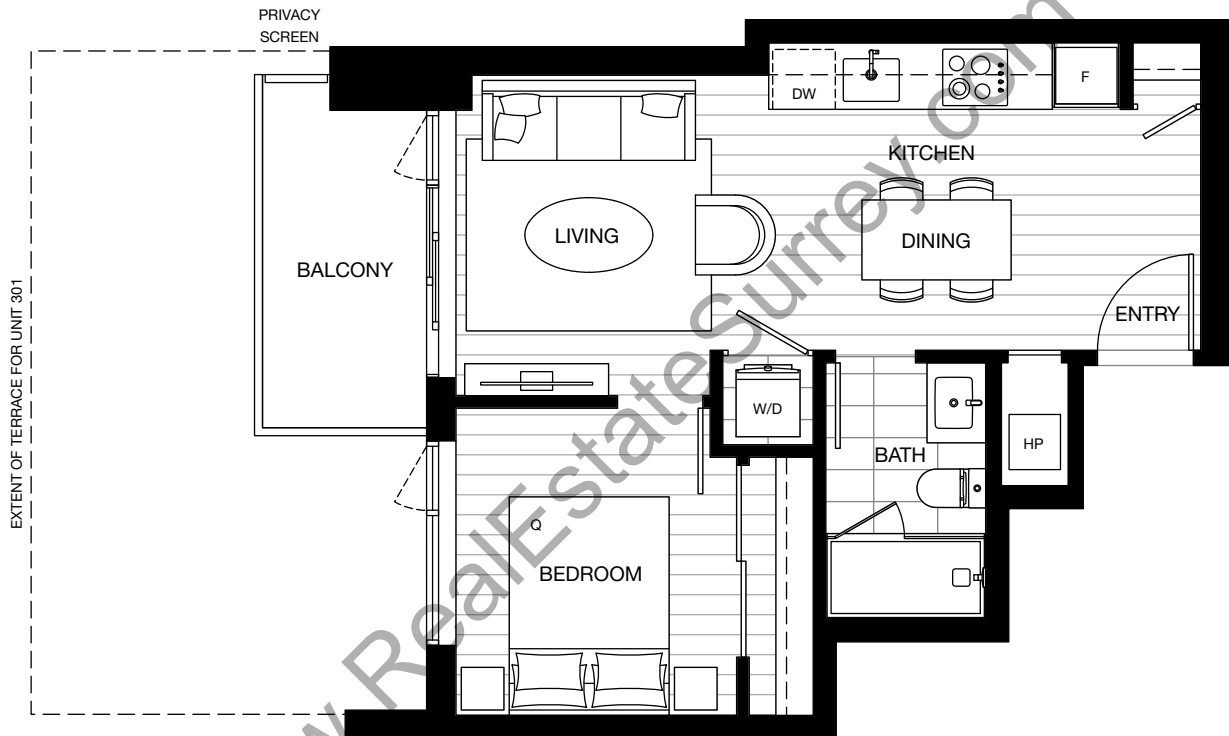
The developer reserves the right to make changes and modifications to the information contained herein. Floorplans and floorplates are subject to change without notice. Please contact a developer sales representative for details. This is not an offering for sale, as an offering can only be made after the filing of a disclosure statement, and only in jurisdictions where qualified in accordance with applicable local laws. E.&O.E.

georgetown 2

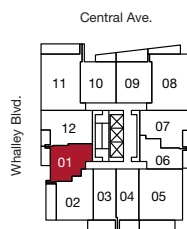
b plan

1 bedroom

indoor: 453 sq ft
 outdoor: 60-245 sq ft
 total: 513-698 sq ft



level 3



levels 4-31



The developer reserves the right to make changes and modifications to the information contained herein. Floorplans and floorplates are subject to change without notice. Please contact a developer sales representative for details. This is not an offering for sale, as an offering can only be made after the filing of a disclosure statement, and only in jurisdictions where qualified in accordance with applicable local laws. E.&O.E.



georgetown 2

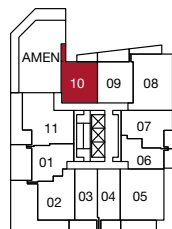
b1 plan

1 bedroom

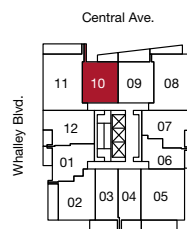
indoor: 485-504 sq ft

outdoor: 62-129 sq ft

total: 547-633 sq ft



level 3



levels 4-31



The developer reserves the right to make changes and modifications to the information contained herein. Floorplans and floorplates are subject to change without notice. Please contact a developer sales representative for details. This is not an offering for sale, as an offering can only be made after the filing of a disclosure statement, and only in jurisdictions where qualified in accordance with applicable local laws. E.&O.E.

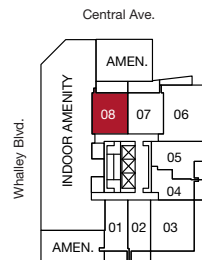
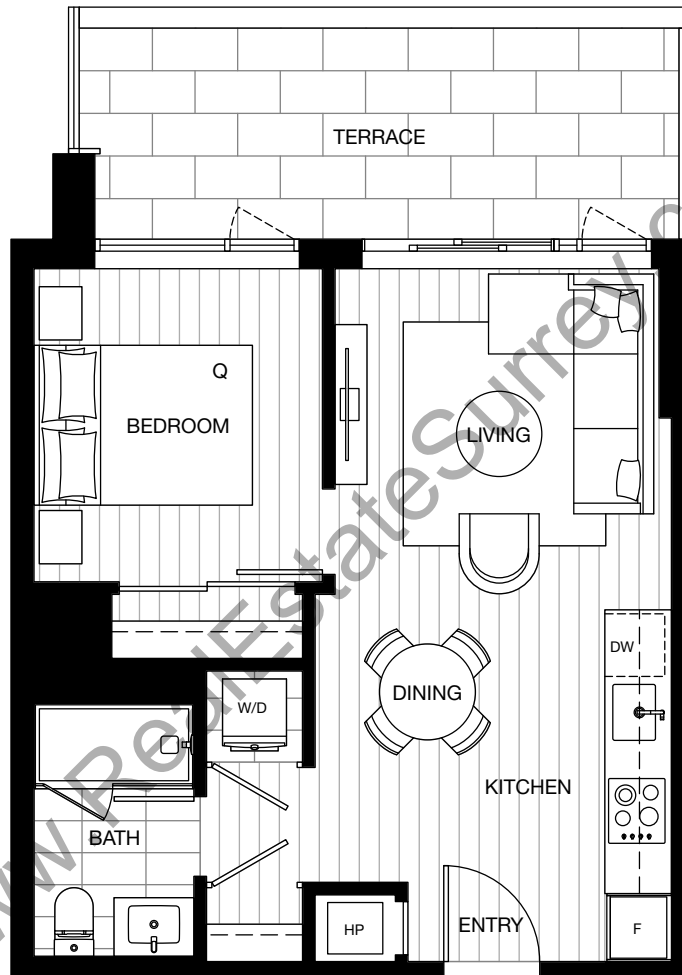


georgetown 2

b1 plan - 208

1 bedroom

indoor: 485 sq ft
outdoor: 129 sq ft
total: 633 sq ft



level 2



The developer reserves the right to make changes and modifications to the information contained herein. Floorplans and floorplates are subject to change without notice. Please contact a developer sales representative for details. This is not an offering for sale, as an offering can only be made after the filing of a disclosure statement, and only in jurisdictions where qualified in accordance with applicable local laws. E.&O.E.

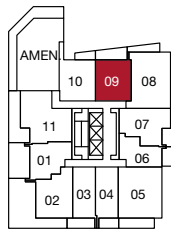
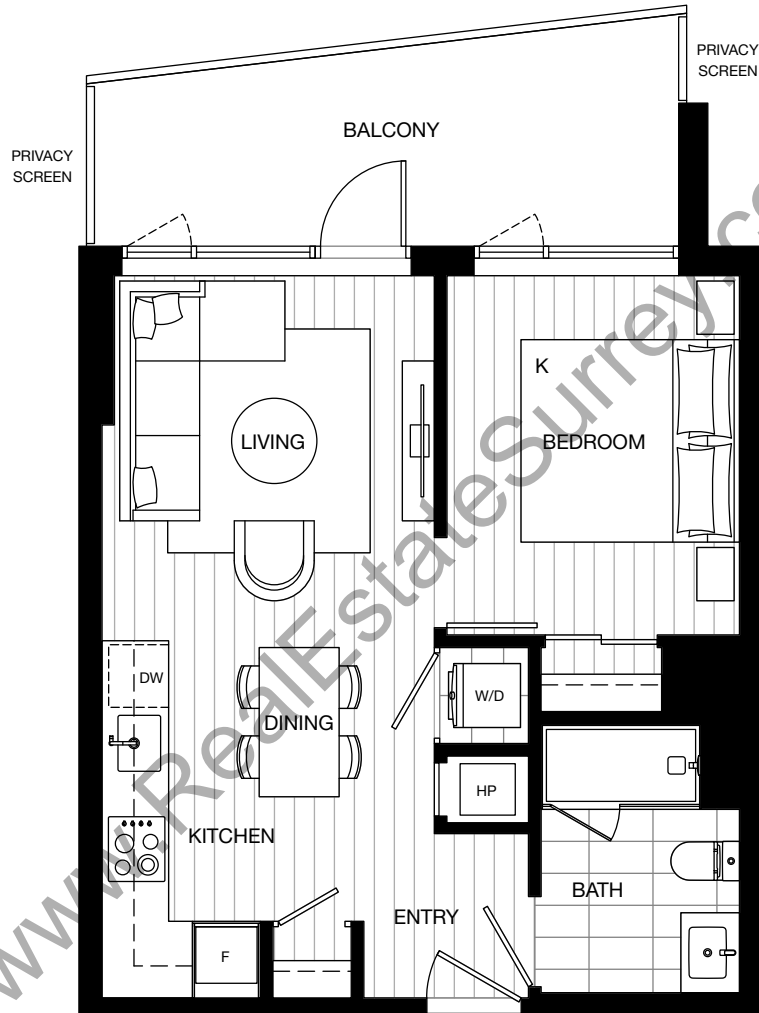


georgetown 2

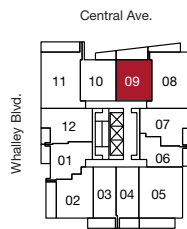
b1a plan

1 bedroom

indoor: 478-495 sq ft
 outdoor: 124-126 sq ft
 total: 602-621 sq ft



level 3



levels 4-31



The developer reserves the right to make changes and modifications to the information contained herein. Floorplans and floorplates are subject to change without notice. Please contact a developer sales representative for details. This is not an offering for sale, as an offering can only be made after the filing of a disclosure statement, and only in jurisdictions where qualified in accordance with applicable local laws. E.&O.E.

georgetown 2

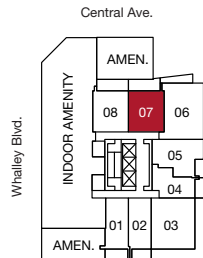
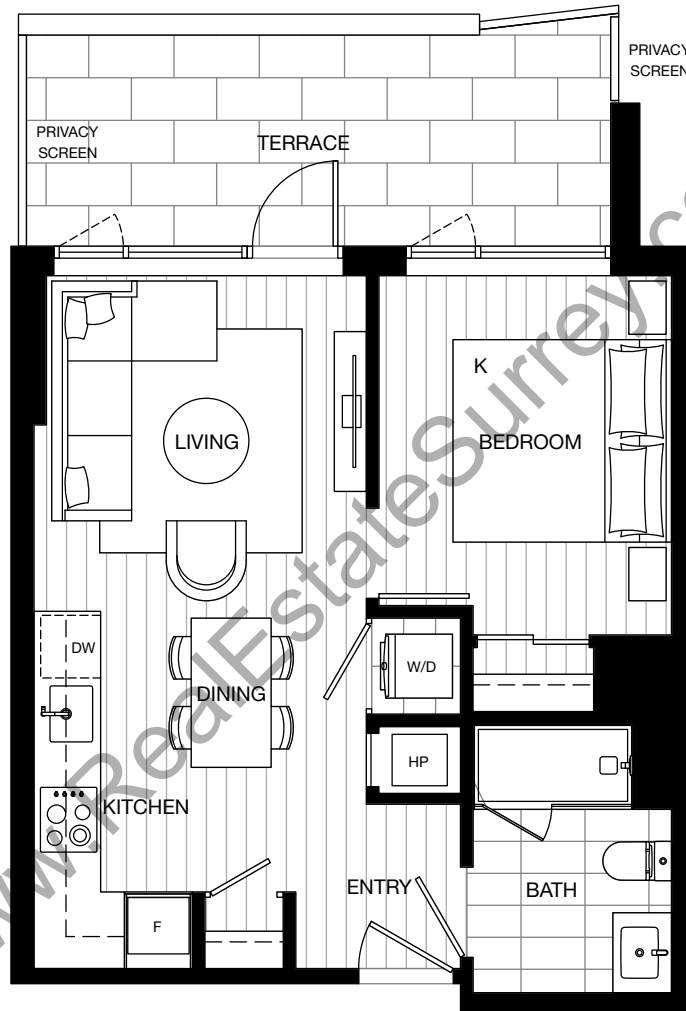
b1a plan - 207

1 bedroom

indoor: 478 sq ft

outdoor: 124 sq ft

total: 602 sq ft



level 2



The developer reserves the right to make changes and modifications to the information contained herein. Floorplans and floorplates are subject to change without notice. Please contact a developer sales representative for details. This is not an offering for sale, as an offering can only be made after the filing of a disclosure statement, and only in jurisdictions where qualified in accordance with applicable local laws. E.&O.E.

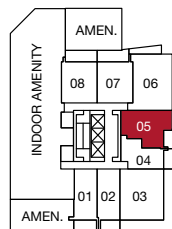
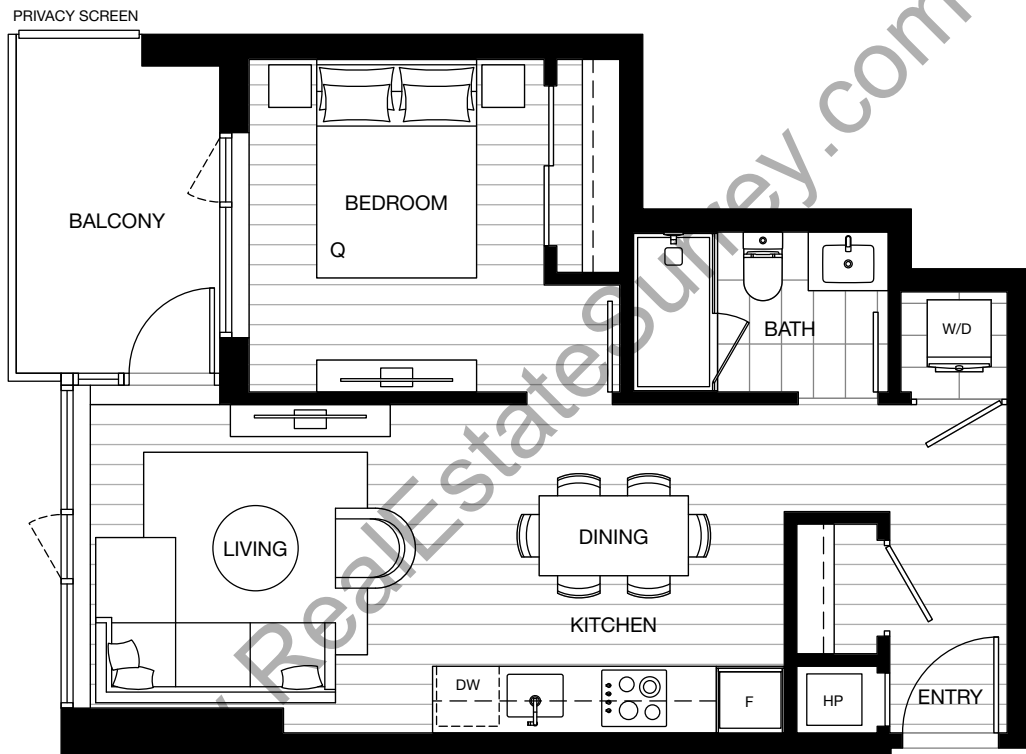


georgetown 2

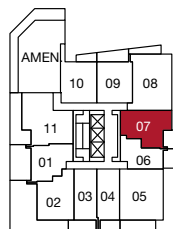
b2 plan

1 bedroom

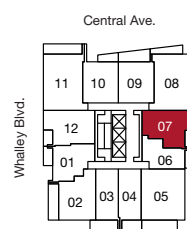
indoor: 533 sq ft
 outdoor: 71-72 sq ft
 total: 604-605 sq ft



level 2



level 3



levels 4-31



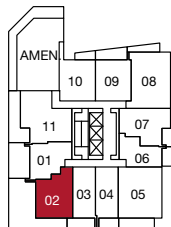
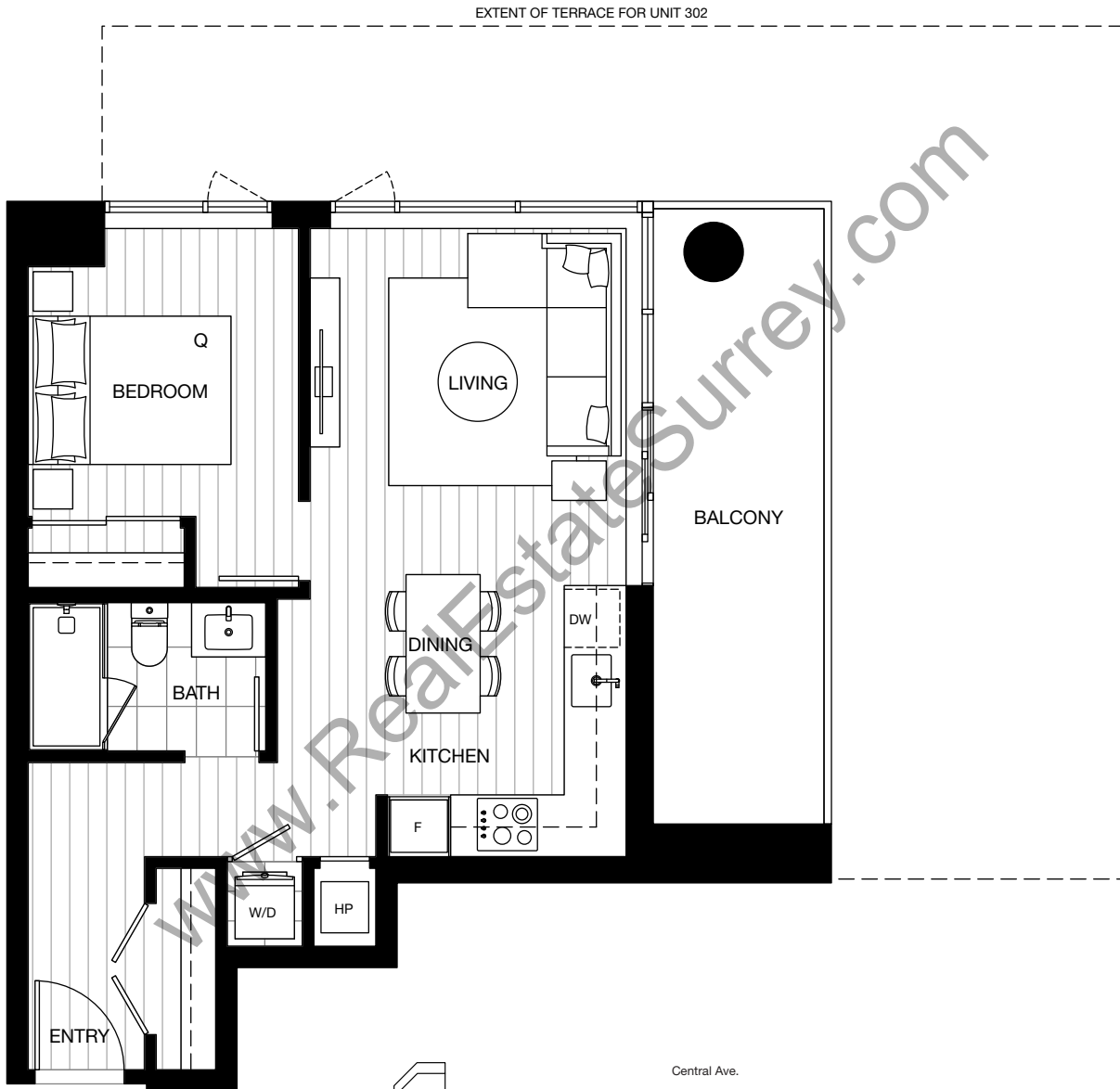
The developer reserves the right to make changes and modifications to the information contained herein. Floorplans and floorplates are subject to change without notice. Please contact a developer sales representative for details. This is not an offering for sale, as an offering can only be made after the filing of a disclosure statement, and only in jurisdictions where qualified in accordance with applicable local laws. E.&O.E.

georgetown 2

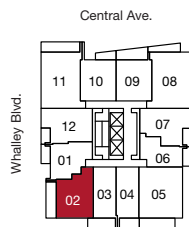
b3 plan

1 bedroom

indoor: 559 sq ft
 outdoor: 124-548 sq ft
 total: 683-1,107 sq ft



level 3



levels 4-31



The developer reserves the right to make changes and modifications to the information contained herein. Floorplans and floorplates are subject to change without notice. Please contact a developer sales representative for details. This is not an offering for sale, as an offering can only be made after the filing of a disclosure statement, and only in jurisdictions where qualified in accordance with applicable local laws. E.&O.E.



georgetown 2

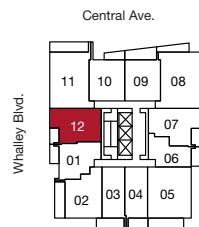
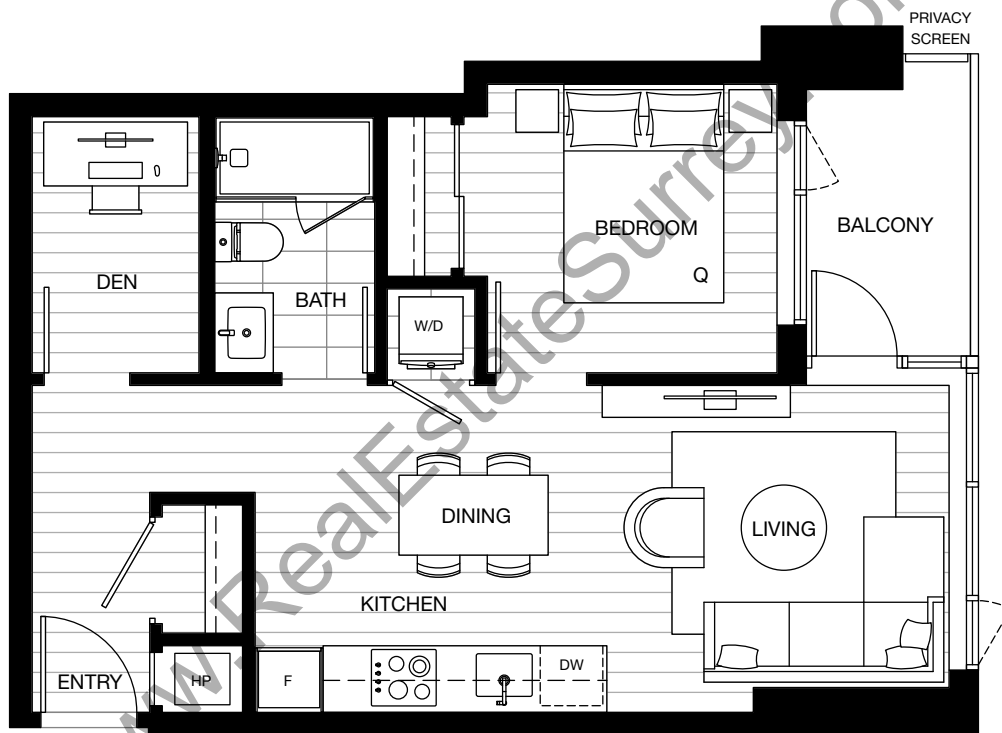
c plan

1 bedroom + den

indoor: 548 sq ft

outdoor: 53 sq ft

total: 601 sq ft



levels 4-31



The developer reserves the right to make changes and modifications to the information contained herein. Floorplans and floorplates are subject to change without notice. Please contact a developer sales representative for details. This is not an offering for sale, as an offering can only be made after the filing of a disclosure statement, and only in jurisdictions where qualified in accordance with applicable local laws. E.&O.E.

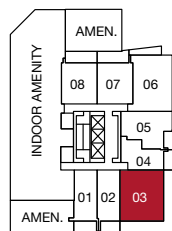


georgetown 2

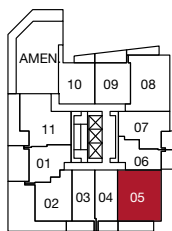
d plan

2 bedroom

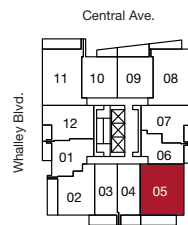
indoor: 763 sq ft
 outdoor: 116-392 sq ft
 total: 879-1,155 sq ft



level 2



level 3



levels 4-31



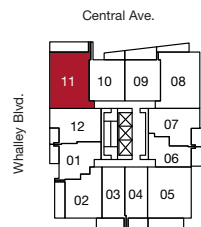
The developer reserves the right to make changes and modifications to the information contained herein. Floorplans and floorplates are subject to change without notice. Please contact a developer sales representative for details. This is not an offering for sale, as an offering can only be made after the filing of a disclosure statement, and only in jurisdictions where qualified in accordance with applicable local laws. E.&O.E.

georgetown 2

d1 plan

2 bedroom

indoor: 784 sq ft
outdoor: 121 sq ft
total: 905 sq ft



levels 4-31



The developer reserves the right to make changes and modifications to the information contained herein. Floorplans and floorplates are subject to change without notice. Please contact a developer sales representative for details. This is not an offering for sale, as an offering can only be made after the filing of a disclosure statement, and only in jurisdictions where qualified in accordance with applicable local laws. E.&O.E.



georgetown 2

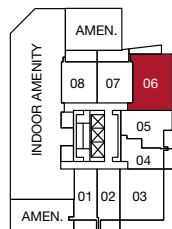
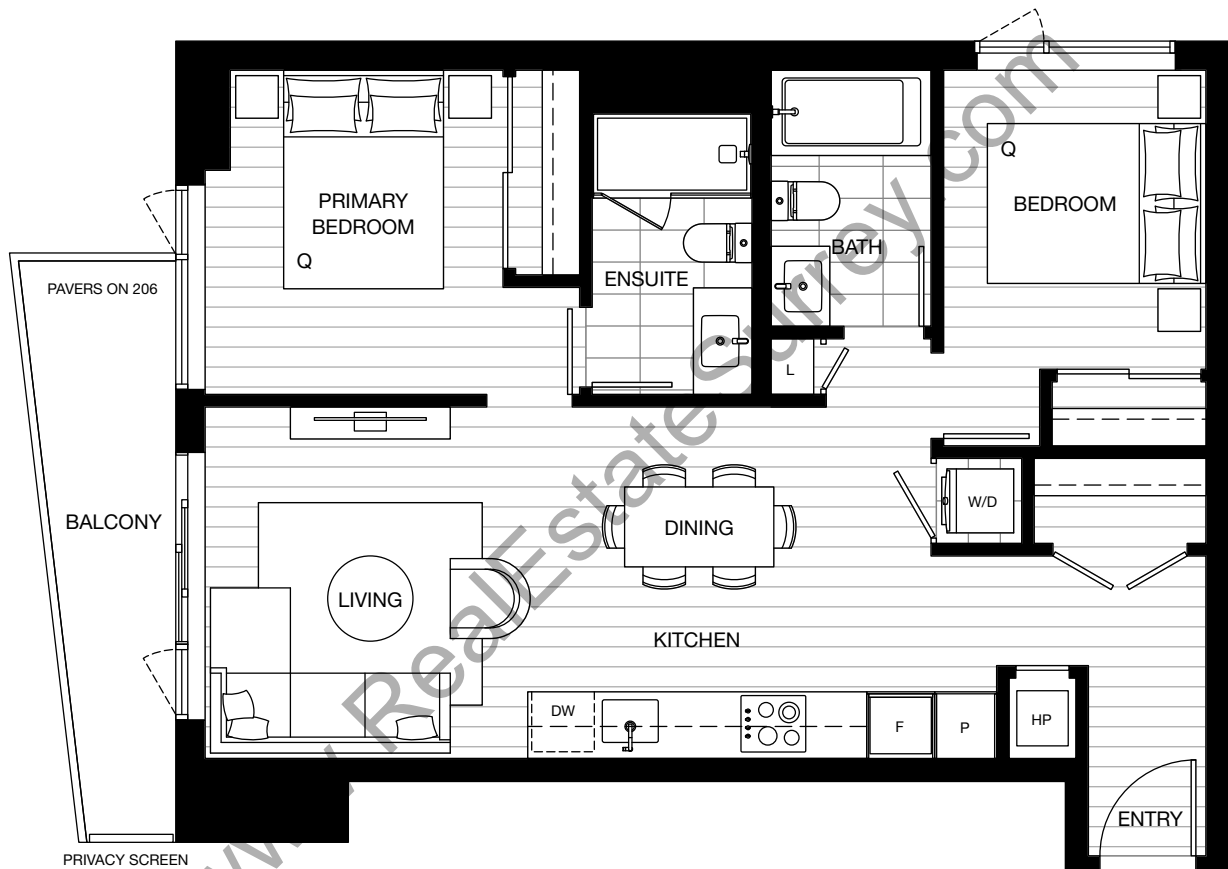
d1a plan

2 bedroom

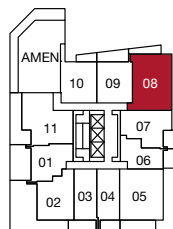
indoor: 779-781 sq ft

outdoor: 75 sq ft

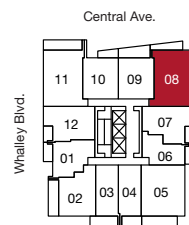
total: 854-856 sq ft



level 2



level 3



levels 4-31



The developer reserves the right to make changes and modifications to the information contained herein. Floorplans and floorplates are subject to change without notice. Please contact a developer sales representative for details. This is not an offering for sale, as an offering can only be made after the filing of a disclosure statement, and only in jurisdictions where qualified in accordance with applicable local laws. E.&O.E.



georgetown 2

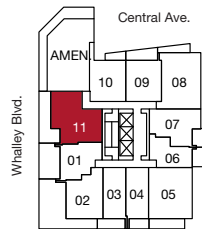
e plan

2 bedroom + den

indoor: 736 sq ft

outdoor: 269 sq ft

total: 1,005 sq ft



level 3



The developer reserves the right to make changes and modifications to the information contained herein. Floorplans and floorplates are subject to change without notice. Please contact a developer sales representative for details. This is not an offering for sale, as an offering can only be made after the filing of a disclosure statement, and only in jurisdictions where qualified in accordance with applicable local laws. E.&O.E.

