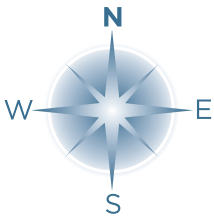
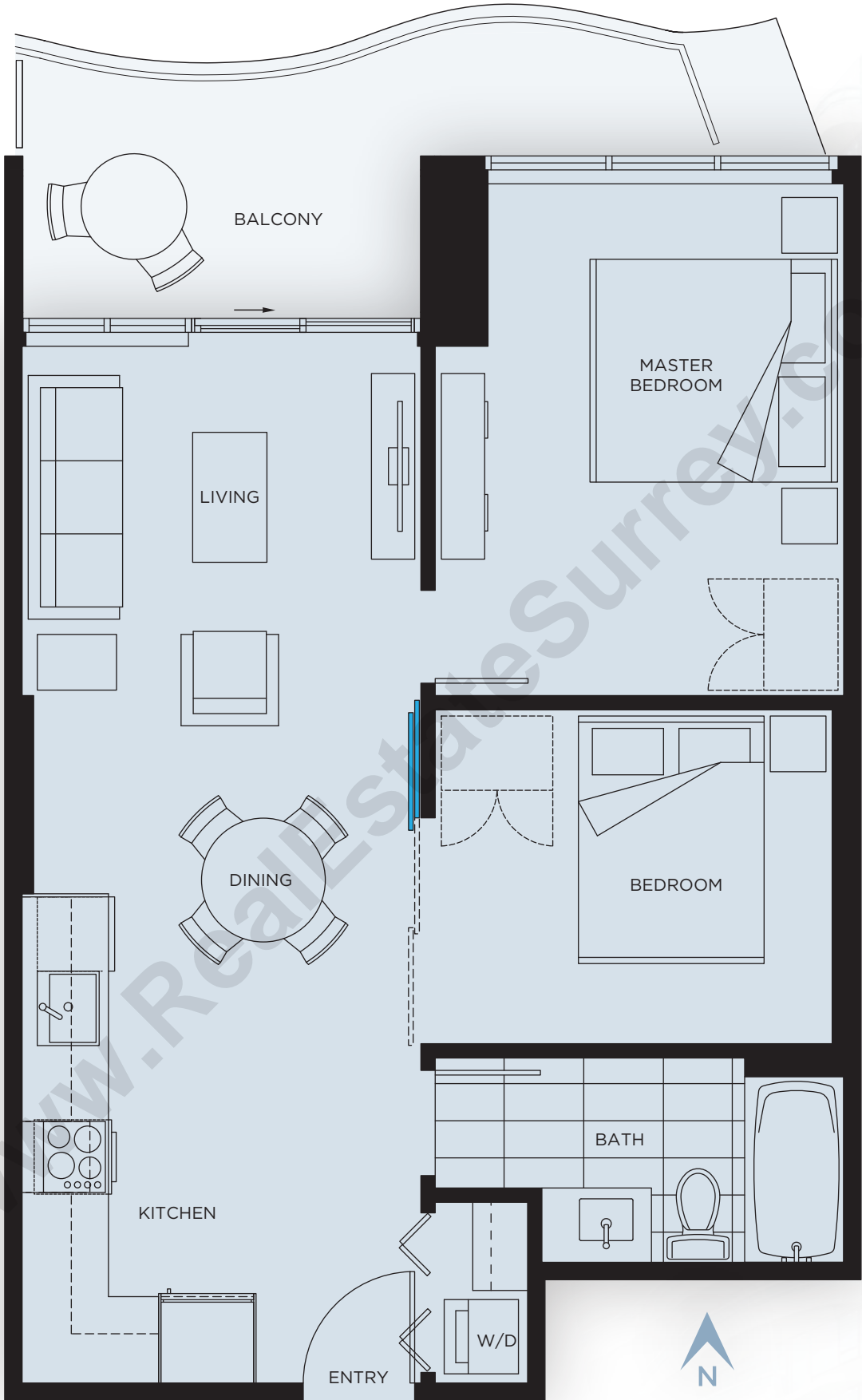


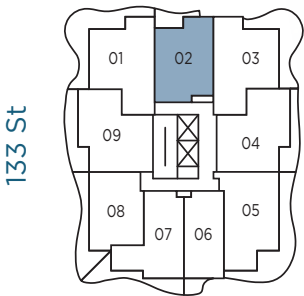
Fraser

2 Bedroom
Approx. 690 sf

Balcony: Approx. 95 sf



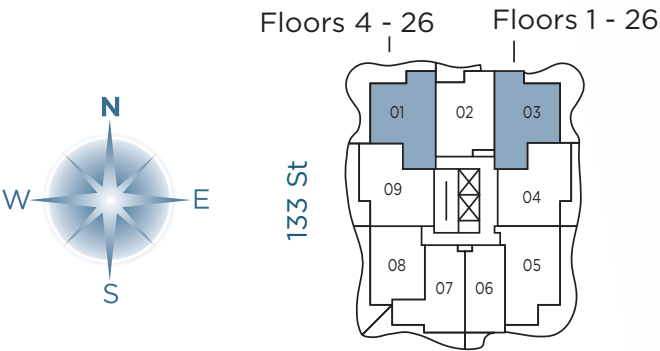
Floors 2 - 26



Watts

2 Bedroom, 2 Bath + Den
Approx. 778 sf

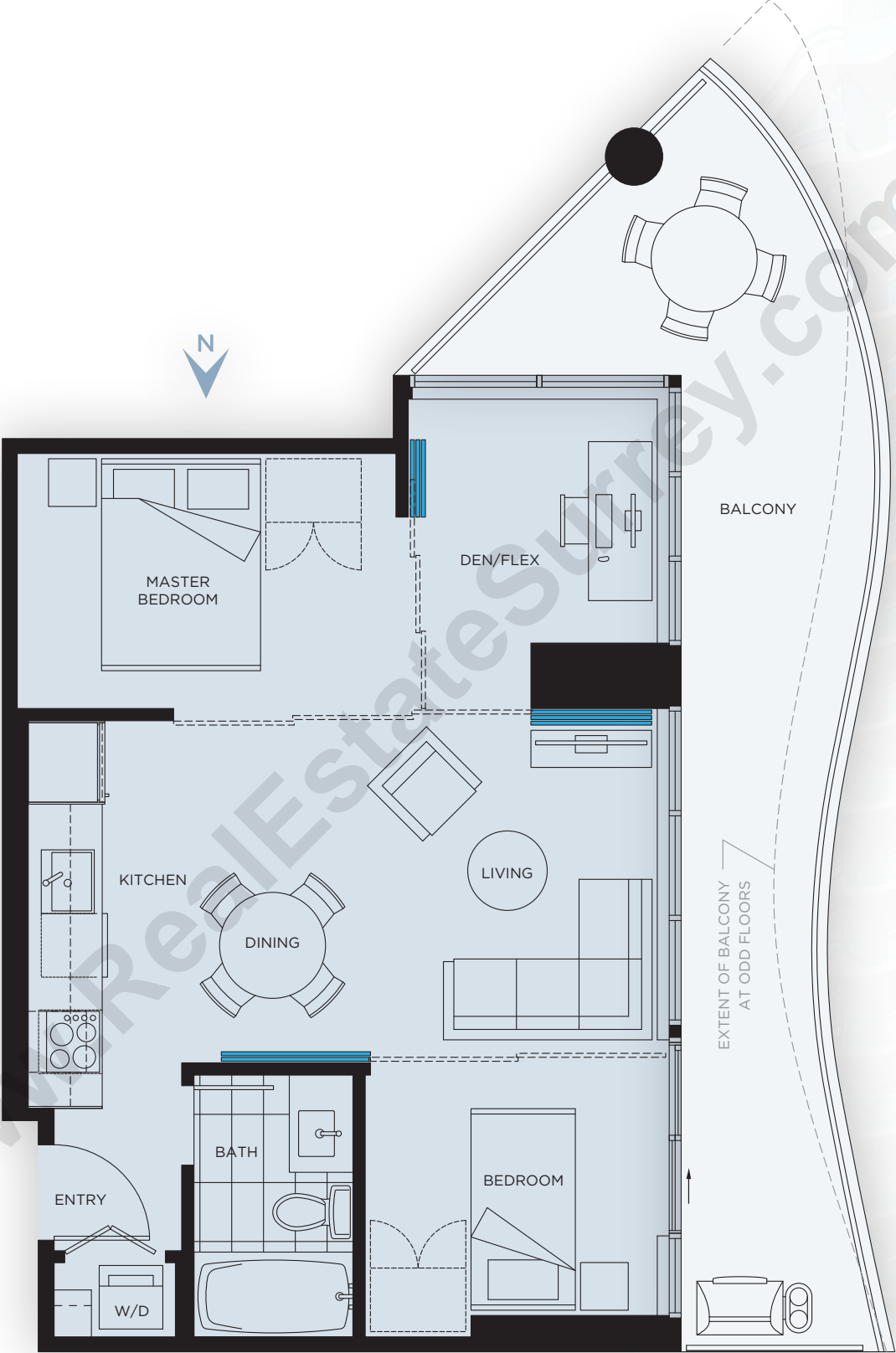
Even Level Balcony: Approx. 220 sf
Odd Level Balcony: Approx. 227 sf



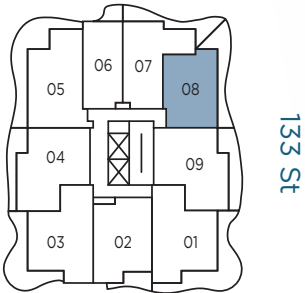
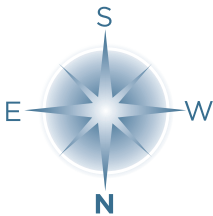
Central City

2 Bedroom + Den
Approx. 615 sf

Even Level Balcony: Approx. 155 sf
Odd Level Balcony: Approx. 111 sf



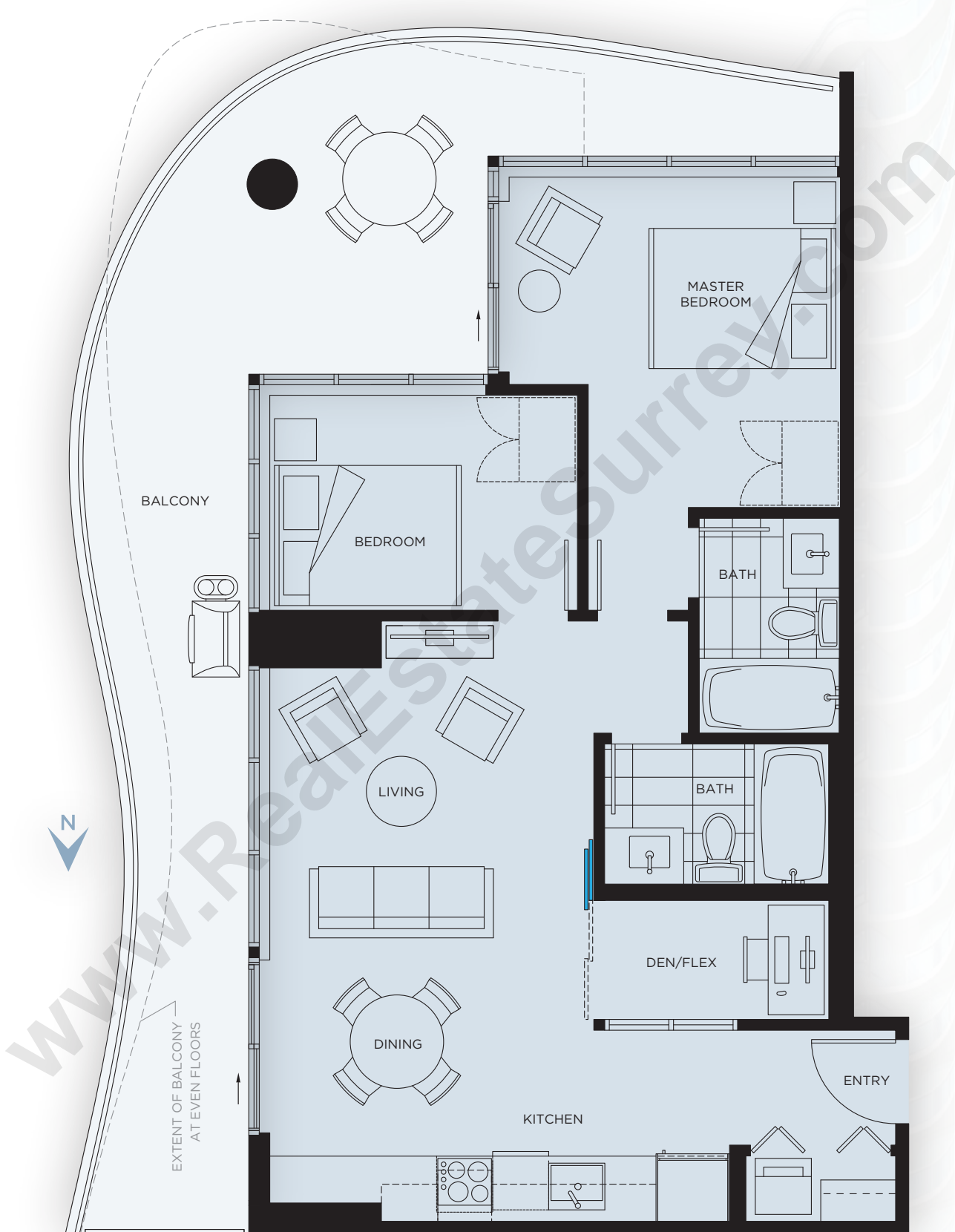
Floors 3 - 10



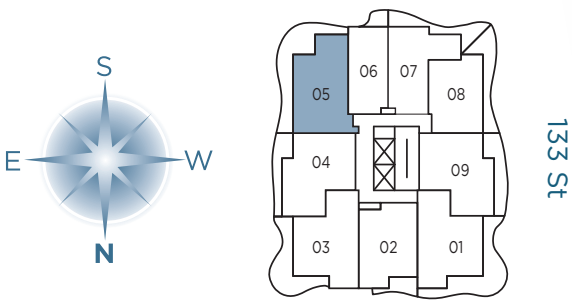
King George

2 Bedroom, 2 Bath + Den
Approx. 773 sf

Even Level Balcony: Approx. 259 sf
Odd Level Balcony: Approx. 325 sf



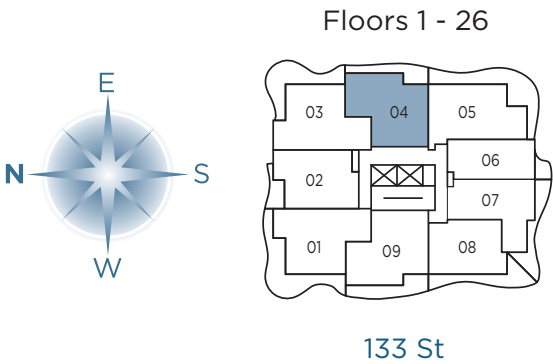
Floors 4 - 26



Bridgeview

2 Bedroom, 2 Bath + Den
Approx. 763 sf

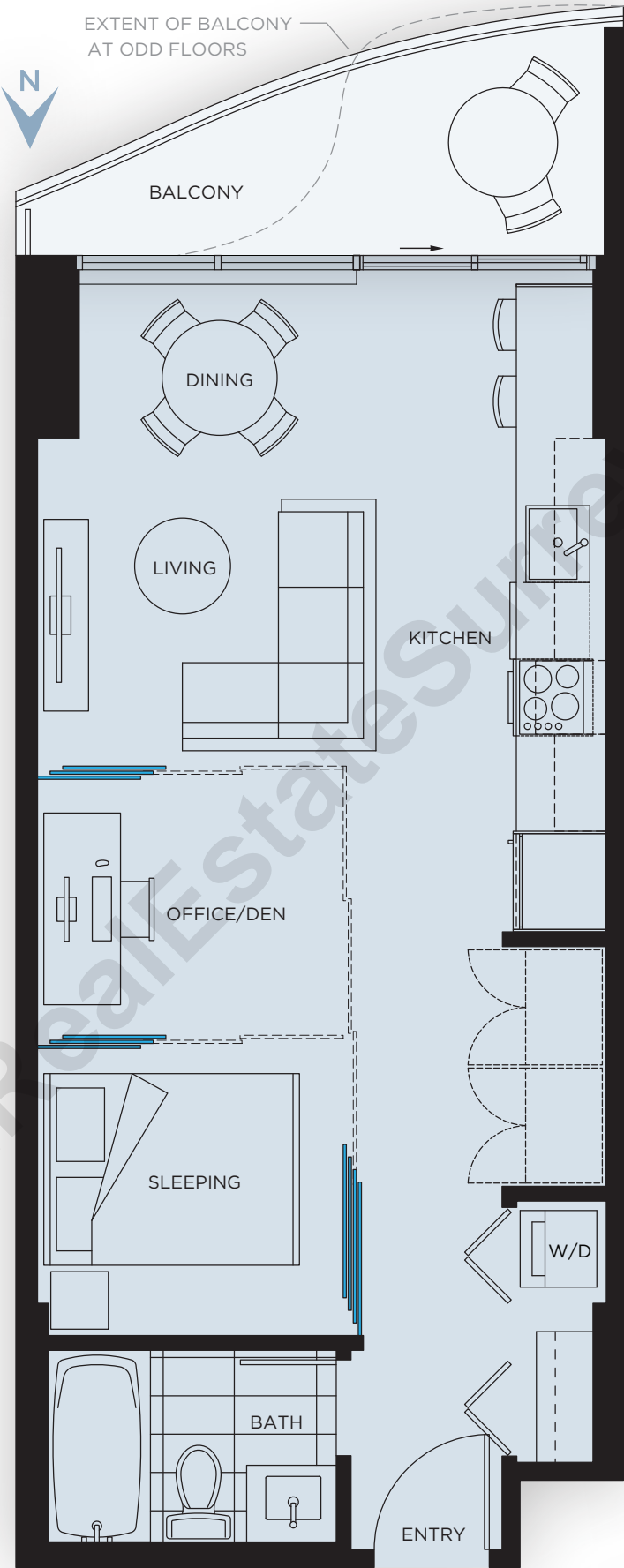
Even Level Balcony: Approx. 145 sf
Odd Level Balcony: Approx. 104 sf



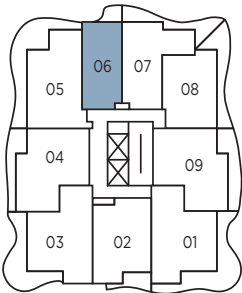
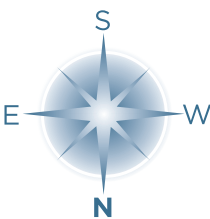
Peace Arch

1 Bedroom + Den
Approx. 522 sf

Even Level Balcony: Approx. 63 sf
Odd Level Balcony: Approx. 42 sf



Floors 3 - 10



133 St

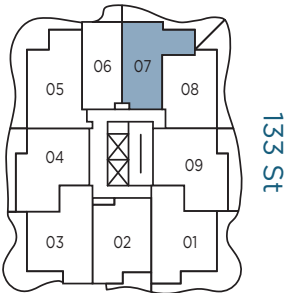
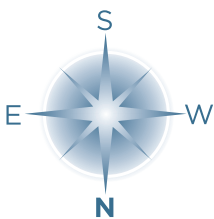
Semiahmoo

2 Bedroom
Approx. 649 sf

Even Level Balcony: Approx. 216 sf
Odd Level Balcony: Approx. 214 sf



Floors 3 - 26



Sullivan

2 Bedroom + Den
Approx. 779 sf



Even Level Balcony: Approx. 137 sf
Odd Level Balcony: Approx. 121 sf

