

A

Avenue

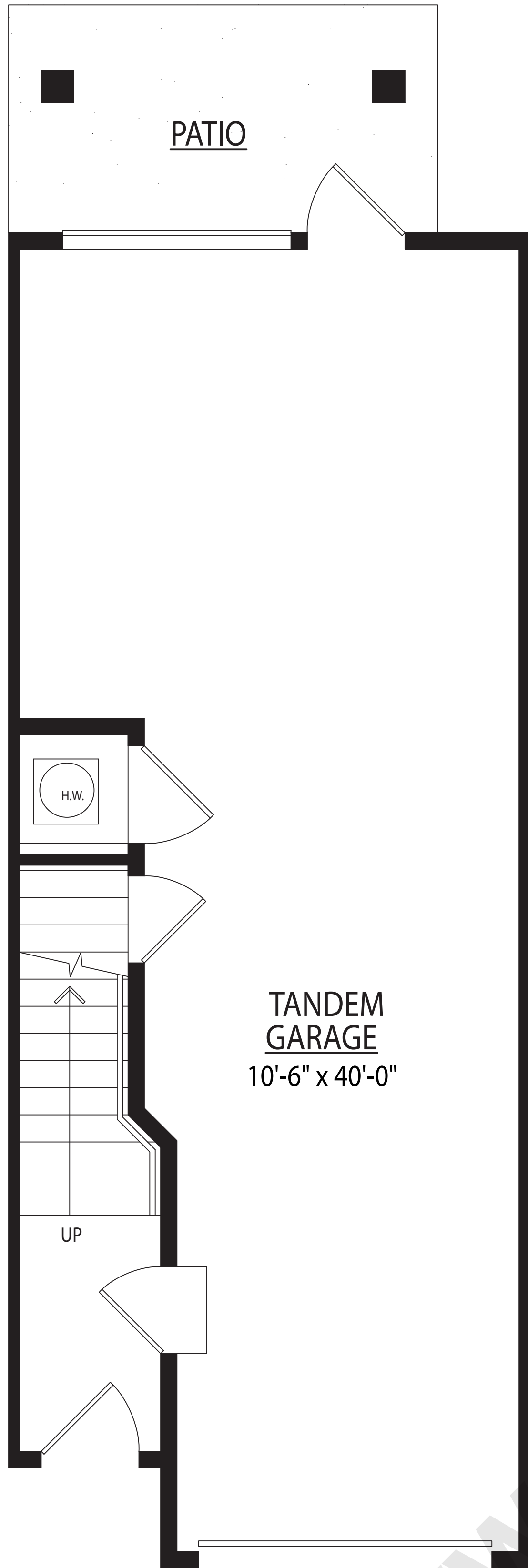


Style A1 - 2 bedrooms, 2-1/2 bathrooms, family room
1,401 sq. ft.

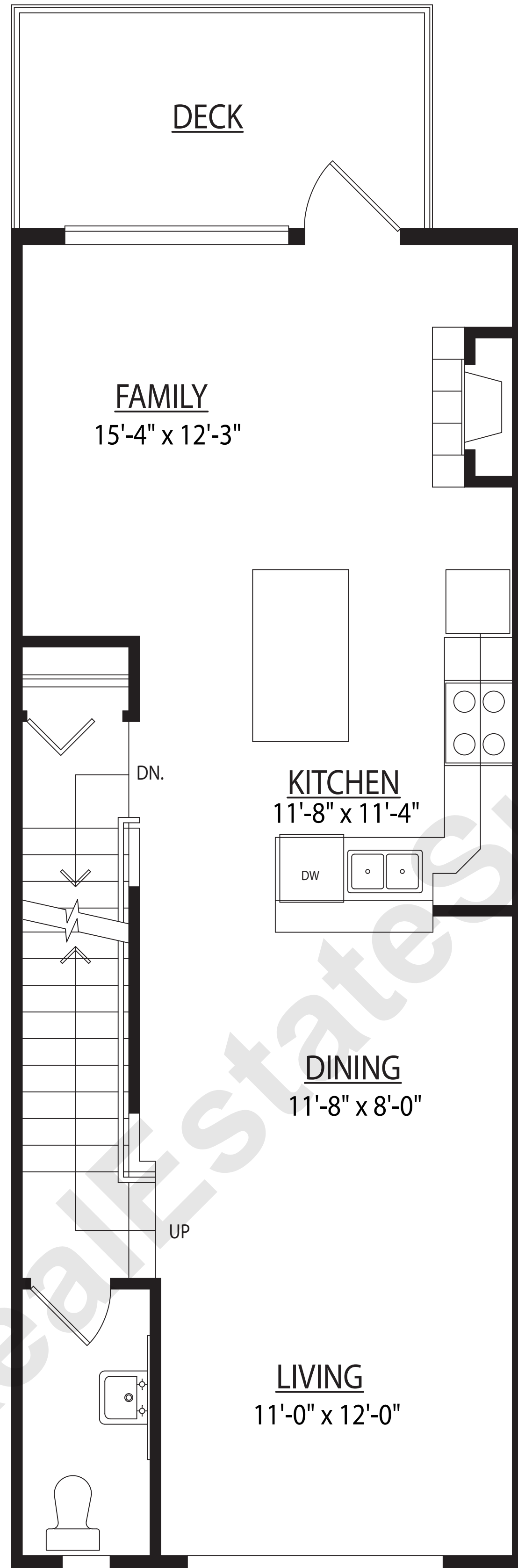
In our continuing efforts to improve these homes, we reserve the right to modify or change plans, specifications, features, and prices without notice. Renderings are an artist's conception and are intended as general reference only. Room sizes and square footages are based on surveyor's measurements. Differences in exterior elevation and location within the site may affect window and rear yard configurations and availability. Please refer to disclosure statement for specific offering details. E.&O.E.

B

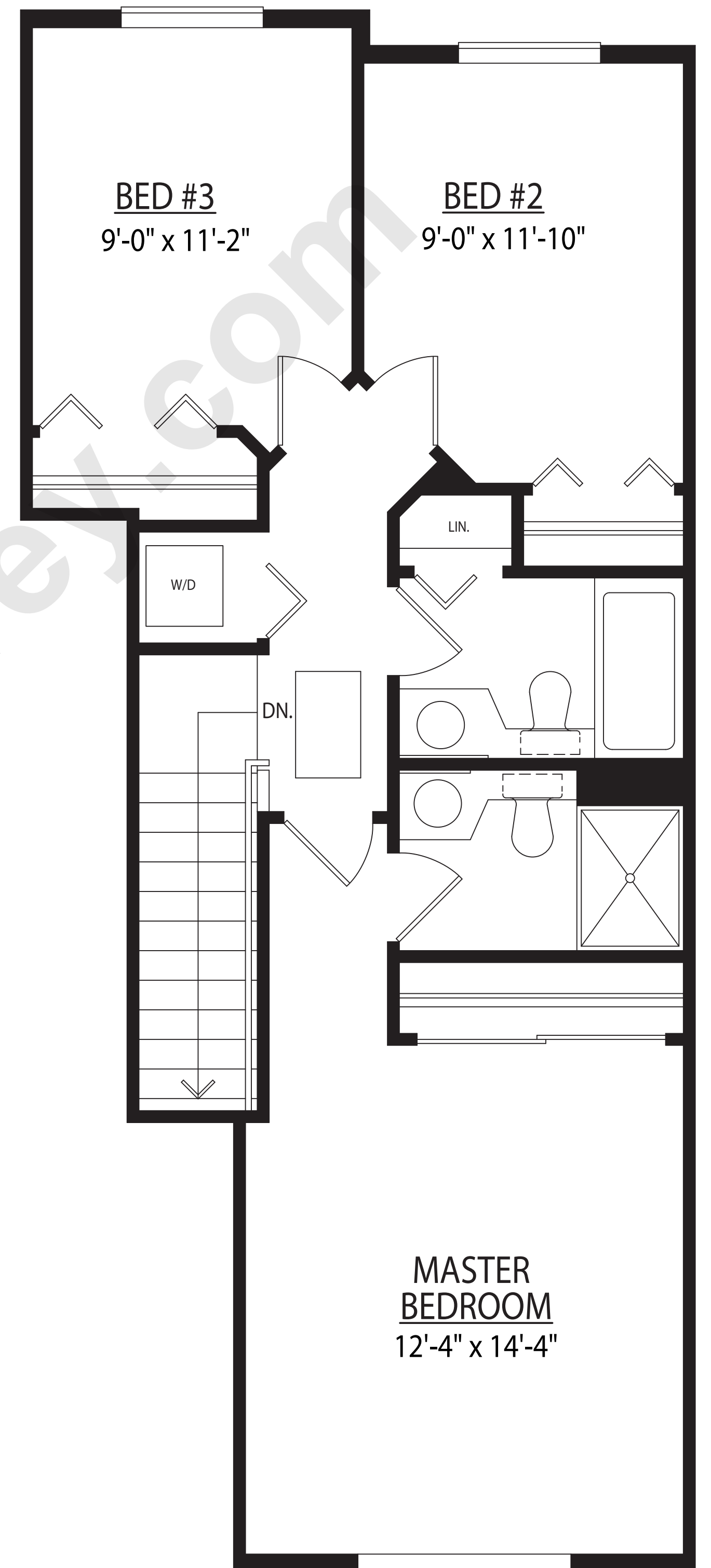
Boulevard



LOWER FLOOR PLAN



MAIN FLOOR PLAN



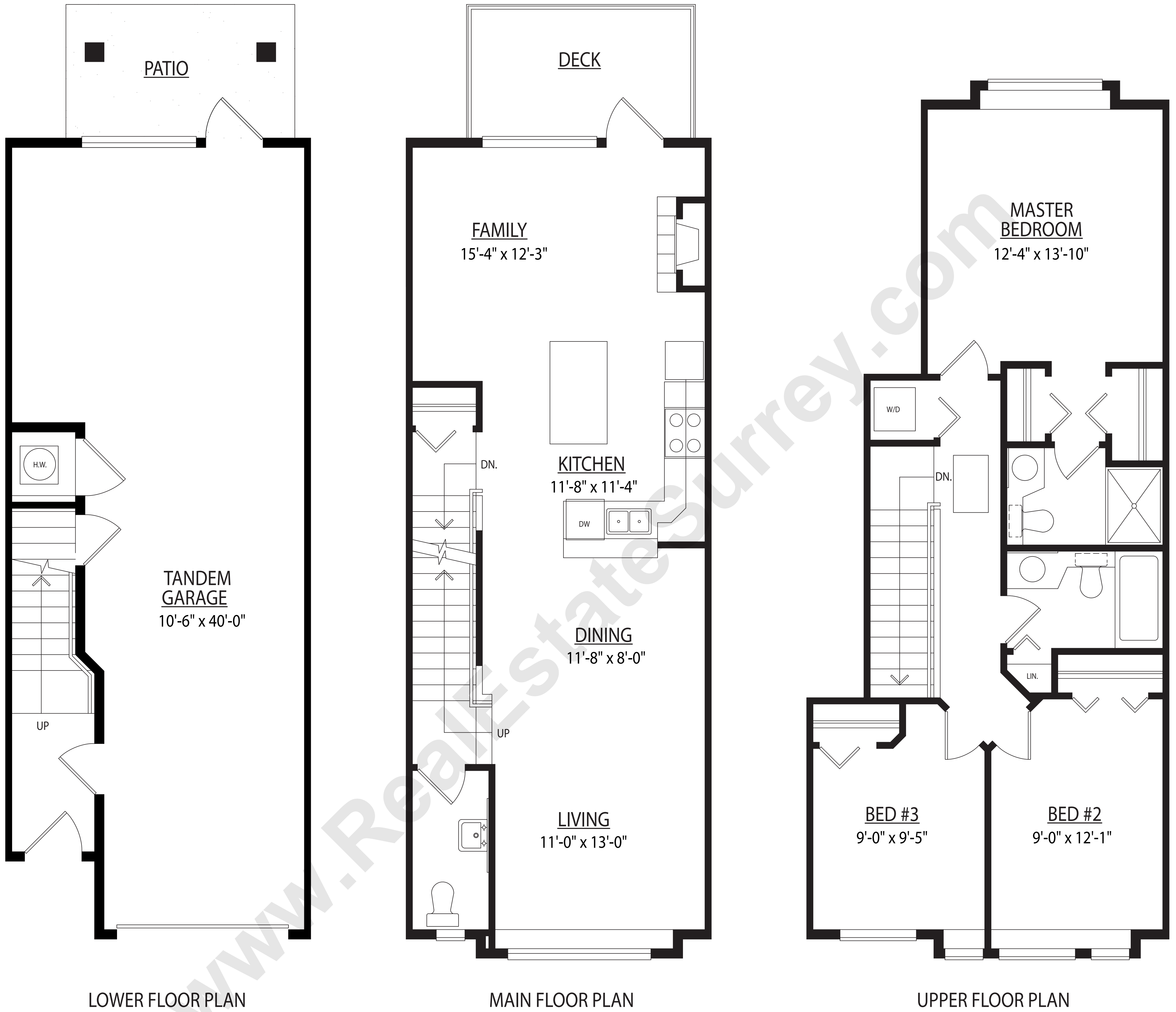
UPPER FLOOR PLAN

Style B1 - 3 bedrooms, 2-1/2 bathrooms, family room
1,412 sq. ft.

In our continuing efforts to improve these homes, we reserve the right to modify or change plans, specifications, features, and prices without notice. Renderings are an artist's conception and are intended as general reference only. Room sizes and square footages are based on surveyor's measurements. Differences in exterior elevation and location within the site may affect window and rear yard configurations and availability. Please refer to disclosure statement for specific offering details. E.&O.E.



Crescent

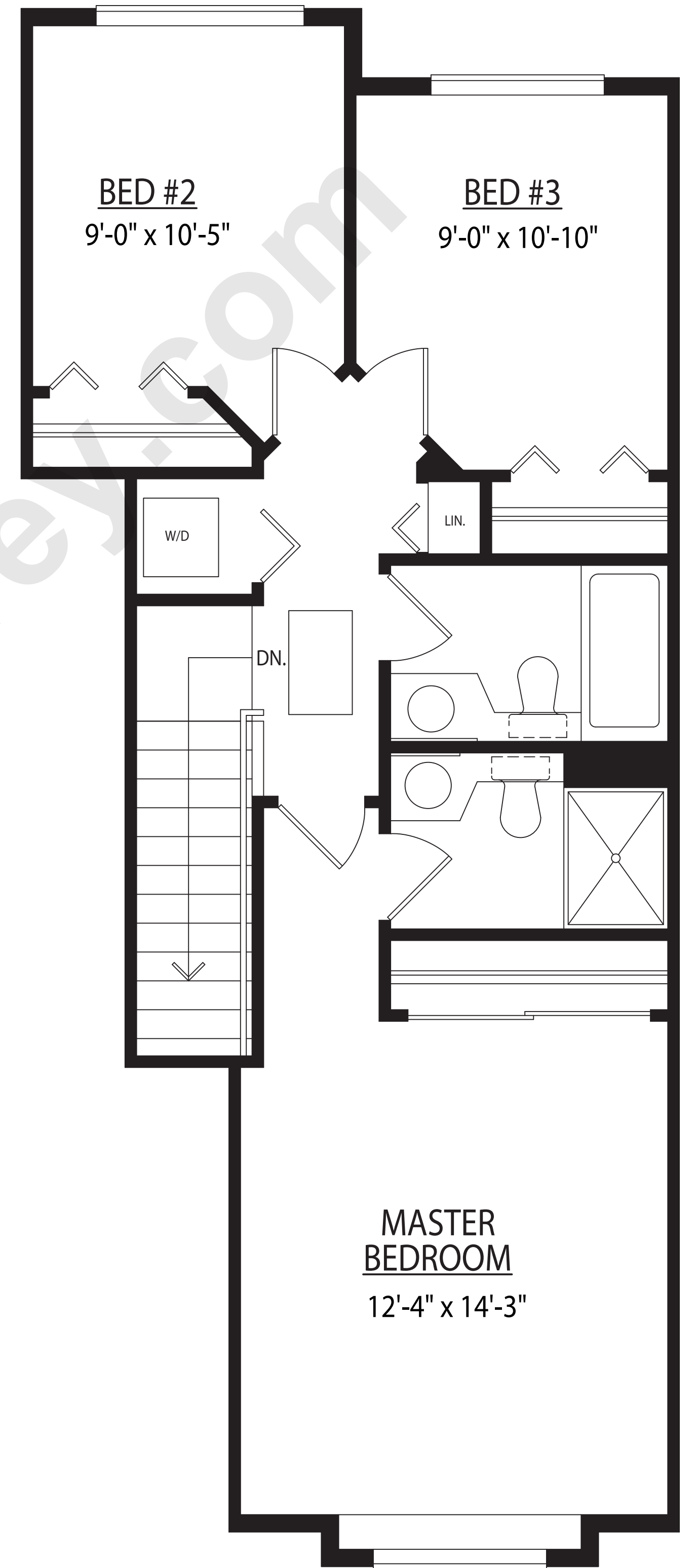
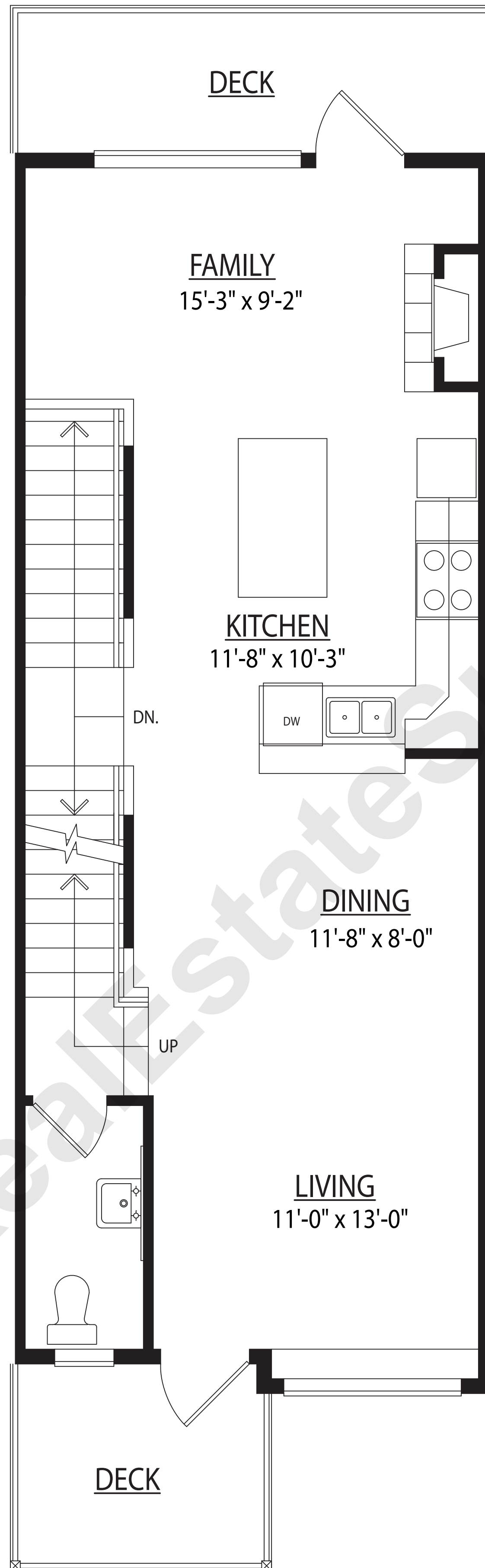
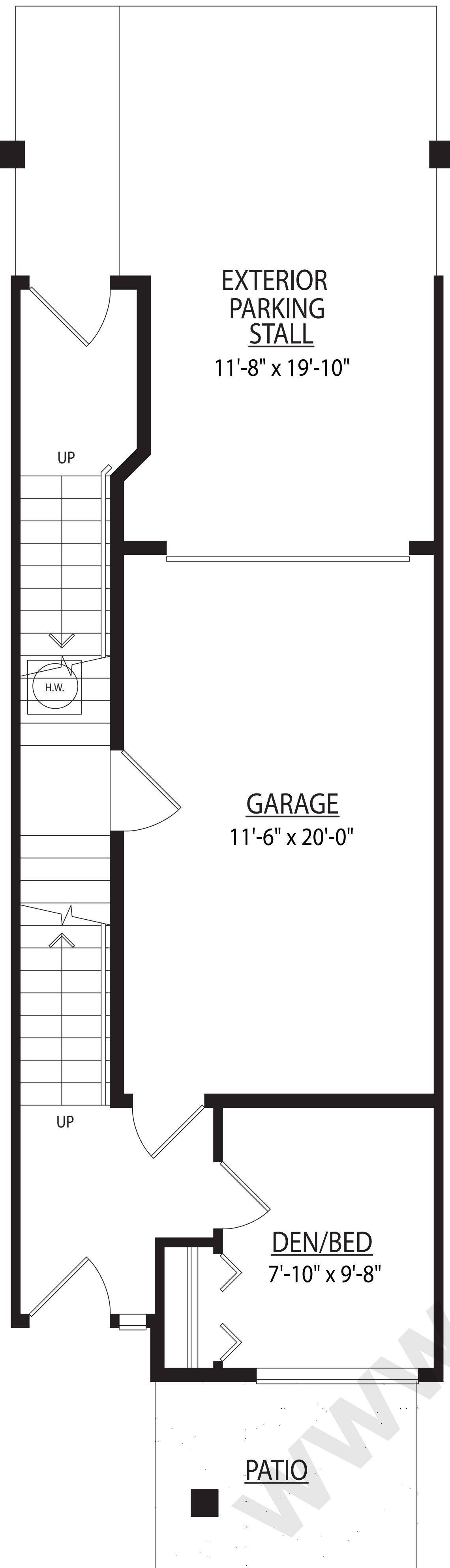


Style C1 - 3 bedrooms, 2-1/2 bathrooms, family room
1,439 sq. ft.

In our continuing efforts to improve these homes, we reserve the right to modify or change plans, specifications, features, and prices without notice. Renderings are an artist's conception and are intended as general reference only. Room sizes and square footages are based on surveyor's measurements. Differences in exterior elevation and location within the site may affect window and rear yard configurations and availability. Please refer to disclosure statement for specific offering details. E.&O.E.

D

District



LOWER FLOOR PLAN

MAIN FLOOR PLAN

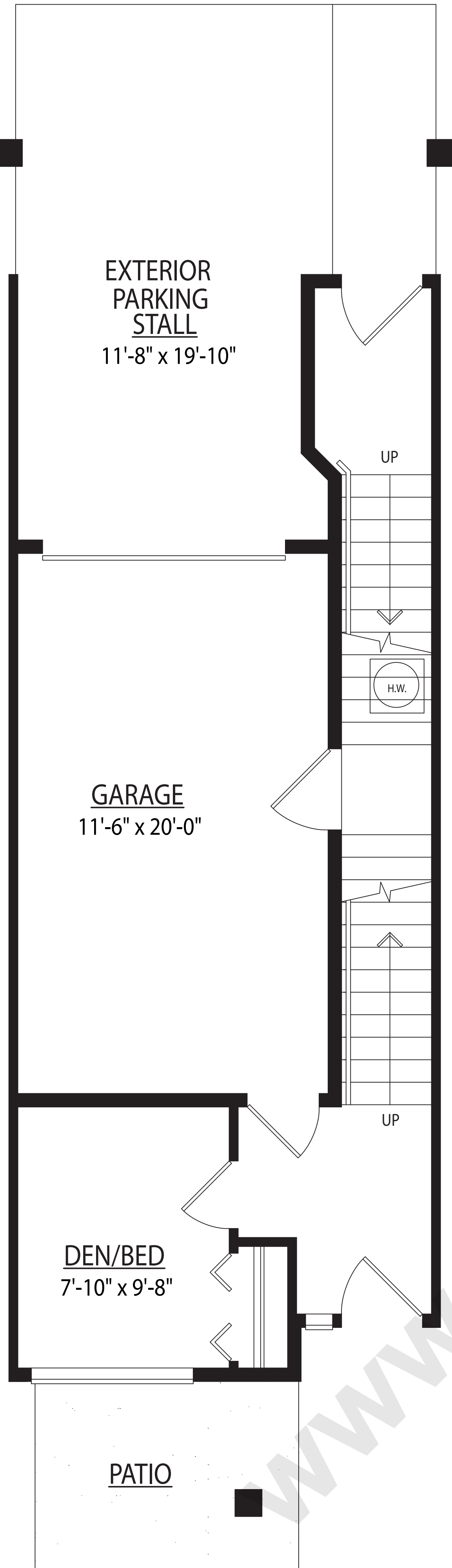
UPPER FLOOR PLAN

Style D1 - 3 bedrooms, 2-1/2 bathrooms, family room, den
1,555 sq. ft.

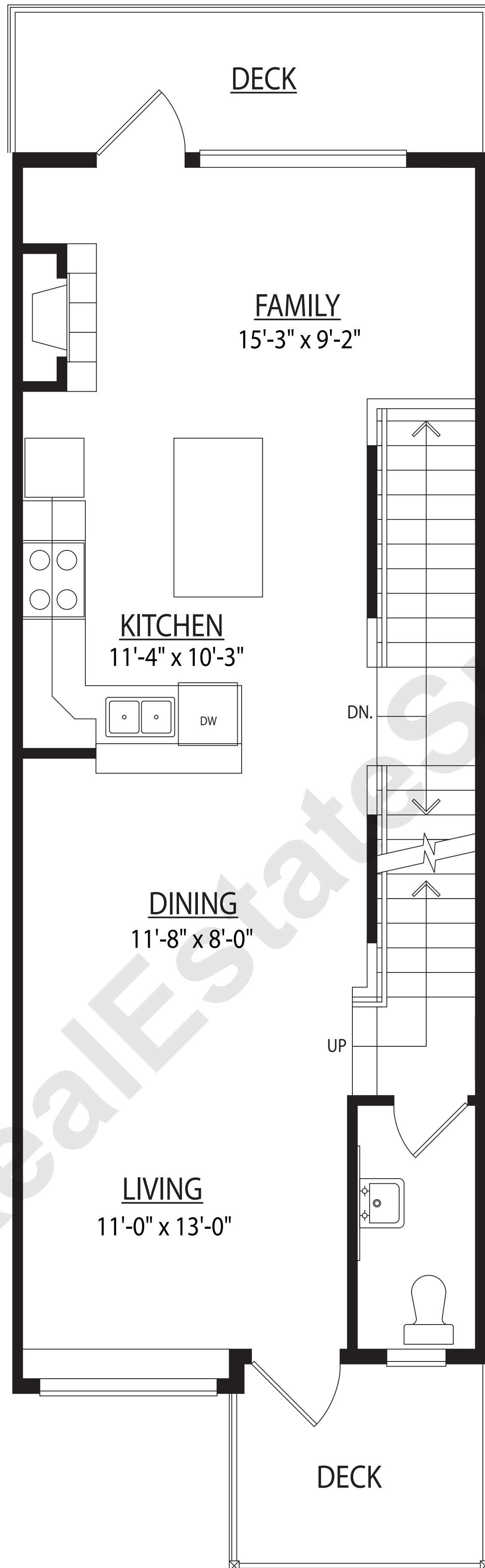
In our continuing efforts to improve these homes, we reserve the right to modify or change plans, specifications, features, and prices without notice. Renderings are an artist's conception and are intended as general reference only. Room sizes and square footages are based on surveyor's measurements. Differences in exterior elevation and location within the site may affect window and rear yard configurations and availability. Please refer to disclosure statement for specific offering details. E.&O.E.



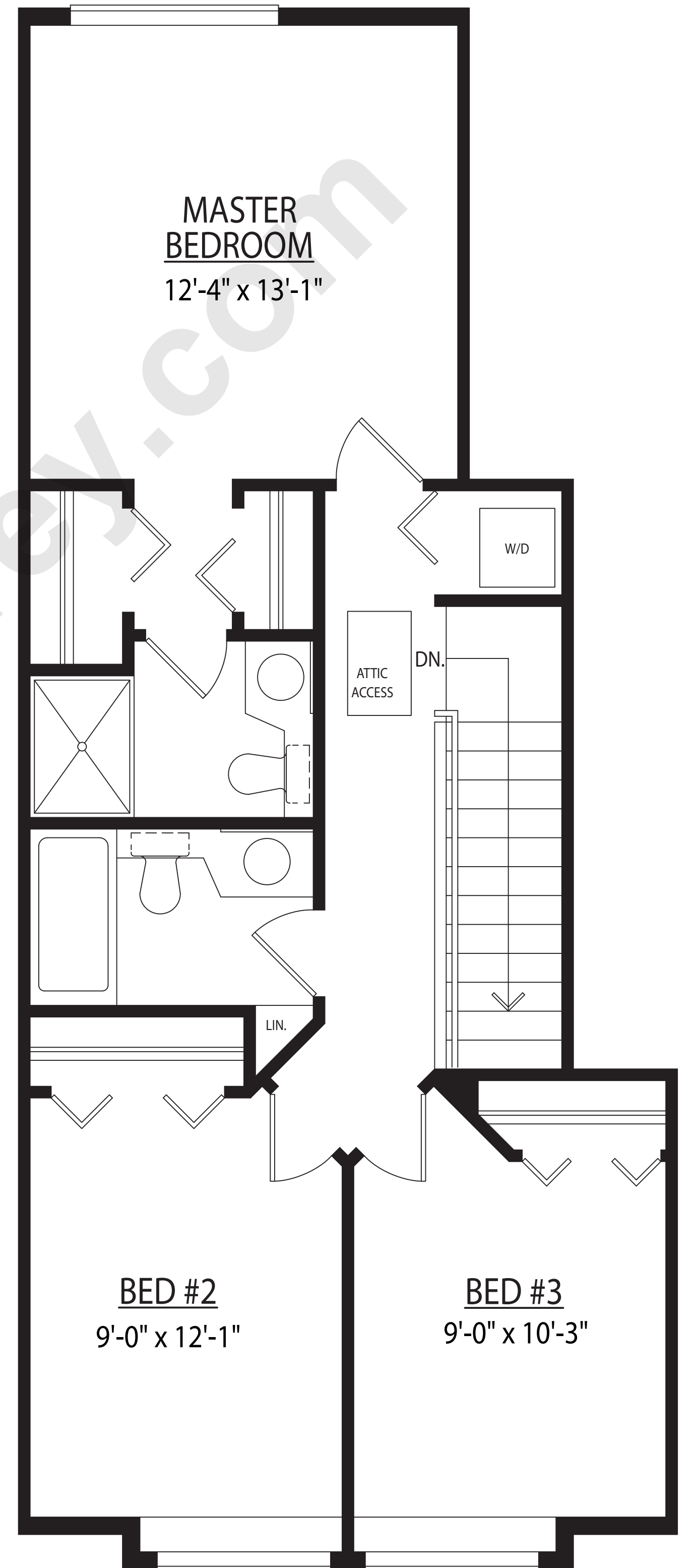
Enclave



LOWER FLOOR PLAN



MAIN FLOOR PLAN



UPPER FLOOR PLAN

Style E1 - 3 bedrooms, 2-1/2 bathrooms, family room, den
1,578 sq. ft.

In our continuing efforts to improve these homes, we reserve the right to modify or change plans, specifications, features, and prices without notice. Renderings are an artist's conception and are intended as general reference only. Room sizes and square footages are based on surveyor's measurements. Differences in exterior elevation and location within the site may affect window and rear yard configurations and availability. Please refer to disclosure statement for specific offering details. E.&O.E.



Fairway



Style F1 - 3 bedrooms, 3-1/2 bathrooms, family room, den
1,944 sq. ft.

In our continuing efforts to improve these homes, we reserve the right to modify or change plans, specifications, features, and prices without notice. Renderings are an artist's conception and are intended as general reference only. Room sizes and square footages are based on surveyor's measurements. Differences in exterior elevation and location within the site may affect window and rear yard configurations and availability. Please refer to disclosure statement for specific offering details. E.&O.E.