

guildford green

Home

Features

Floor Plans

Neighbourhood

Contact

UNIT TYPE A1

3 BEDROOMS 1,759 S.F. (163.42 m²)



BASEMENT PLAN

242 S.F. (22.48 m²)



MAIN FLOOR PLAN

746 S.F. (69.31 m²)



UPPER FLOOR PLAN

771 S.F. (71.63 m²)

[CLICK HERE TO VIEW OUR OTHER FLOOR PLANS](#)

UNIT TYPE A2

3 BEDROOMS 1,759 S.F. (163.42 m²)



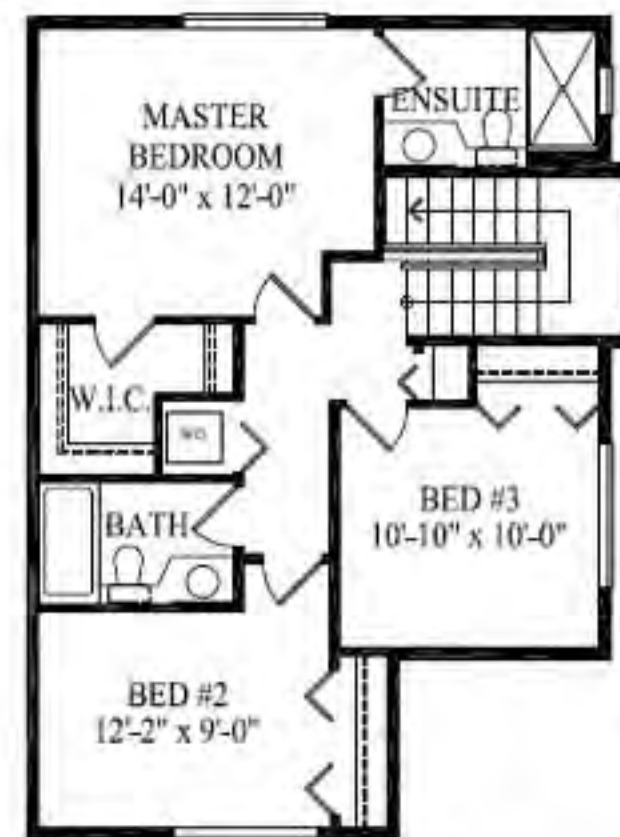
BASEMENT PLAN

242 S.F. (22.48 m²)



MAIN FLOOR PLAN

746 S.F. (69.31 m²)



UPPER FLOOR PLAN

771 S.F. (71.63 m²)

[CLICK HERE TO VIEW OUR OTHER FLOOR PLANS](#)

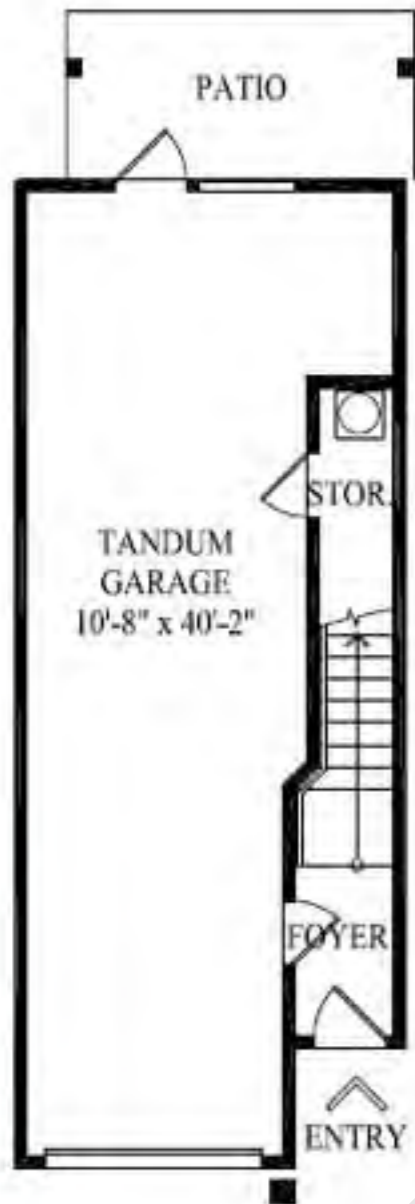
guildford green

Near all of Guildford's Great Ammenities and Attractions

[home](#) [site plans](#) [gallery](#) [contact](#)

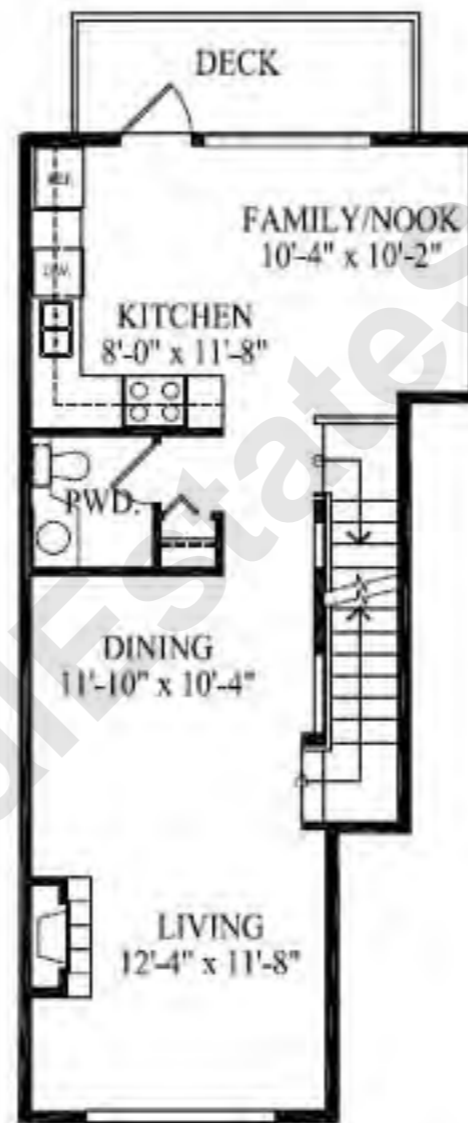
UNIT TYPE B

3 BEDROOMS 1,457 S.F. (135.36 m2)



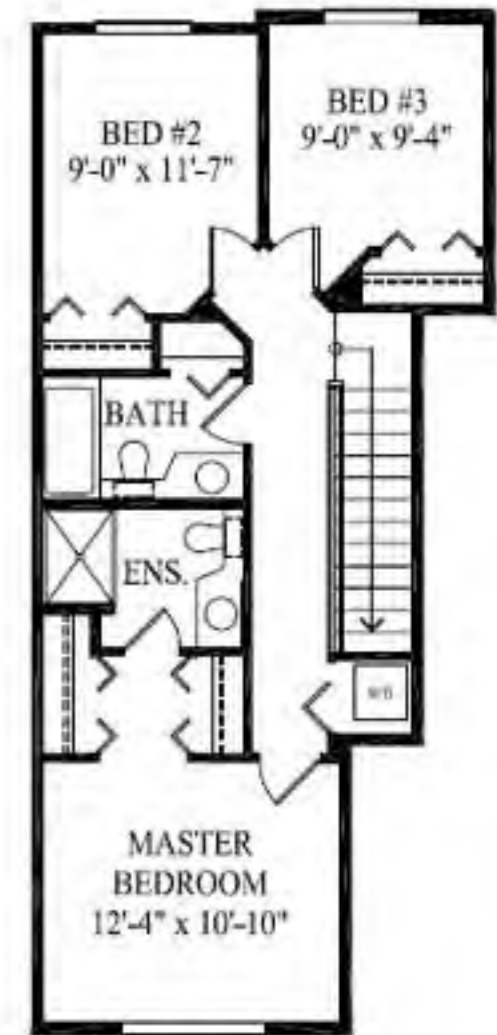
BASEMENT PLAN

123 S.F. (11.43 m2)



MAIN FLOOR PLAN

655 S.F. (60.85 m2)



UPPER FLOOR PLAN

679 S.F. (63.08 m2)

[CLICK HERE TO VIEW OUR OTHER FLOOR PLANS](#)

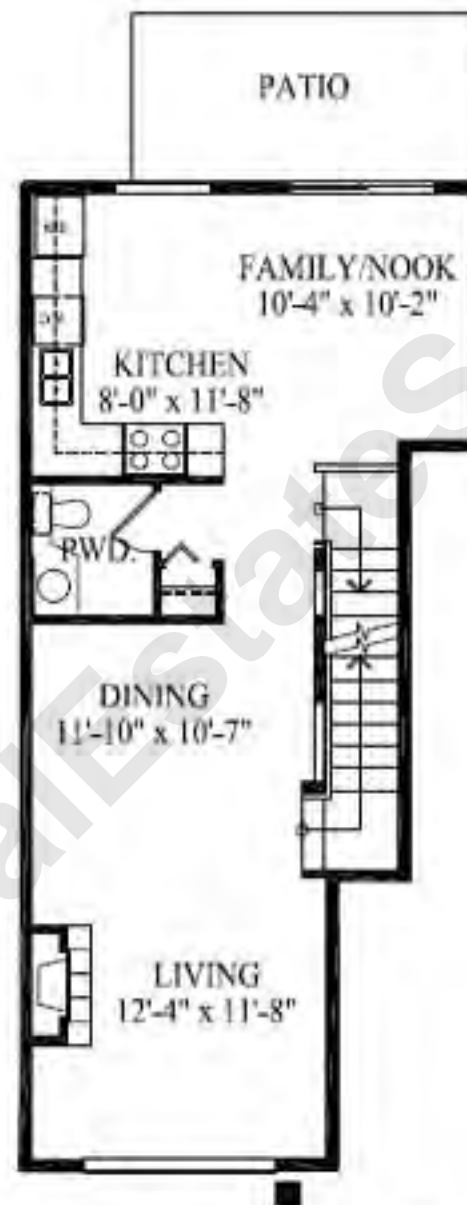
UNIT TYPE B2

3 BEDROOMS 1,457 S.F. (135.36 m²)



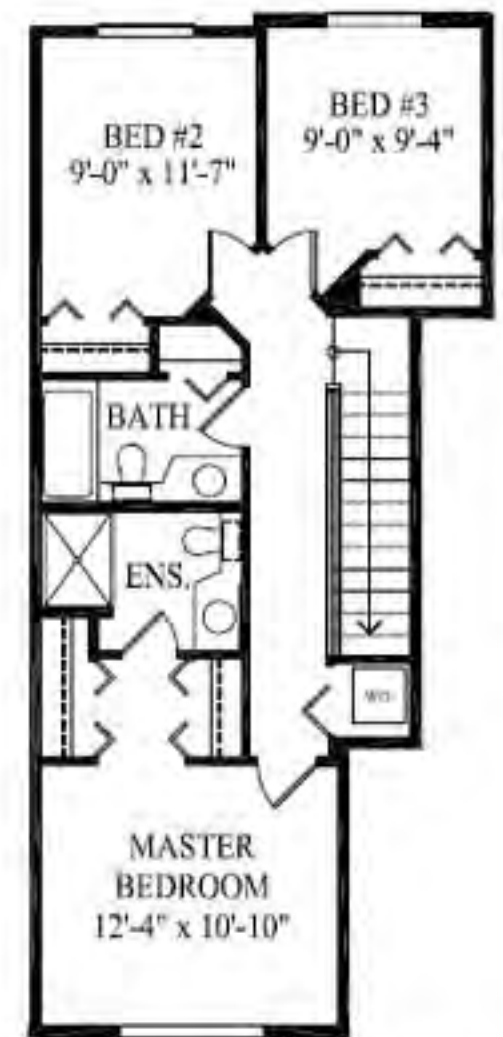
BASEMENT PLAN

123 S.F. (11.43 m²)



MAIN FLOOR PLAN

655 S.F. (60.85 m²)



UPPER FLOOR PLAN

679 S.F. (63.08 m²)

[CLICK HERE TO VIEW OUR OTHER FLOOR PLANS](#)

guildford green

Home

Features

Floor Plans

Neighbourhood

Contact

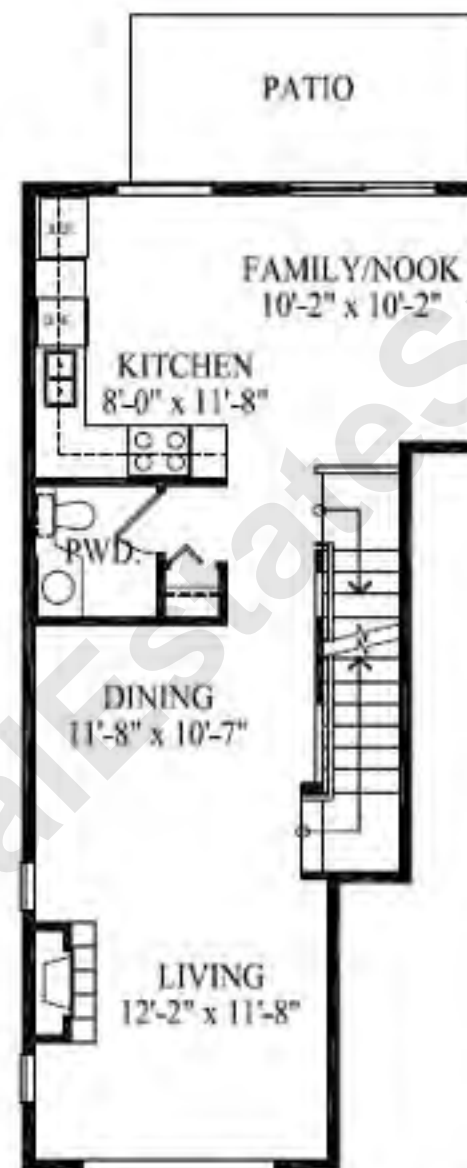
UNIT TYPE B3

3 BEDROOMS 1,457 S.F. (135.36 m²)



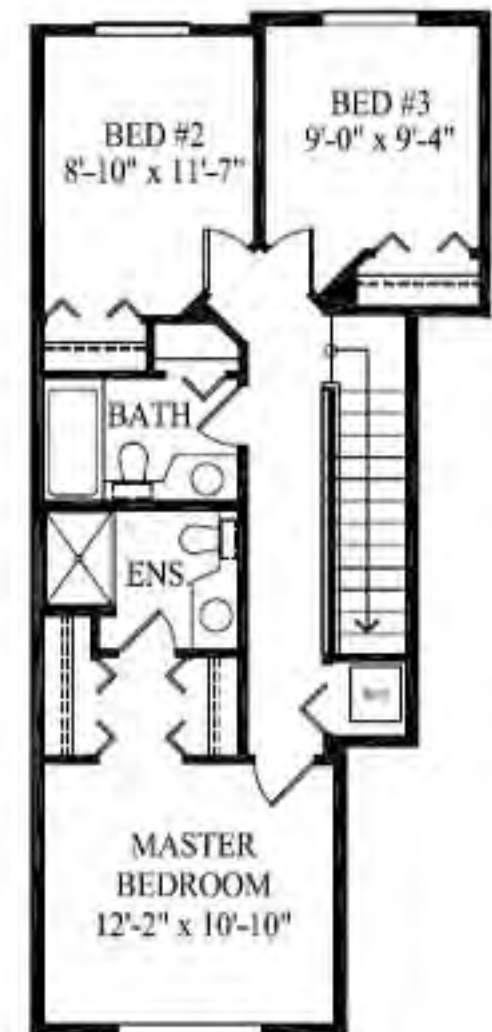
BASEMENT PLAN

123 S.F. (11.43 m²)



MAIN FLOOR PLAN

655 S.F. (60.85 m²)



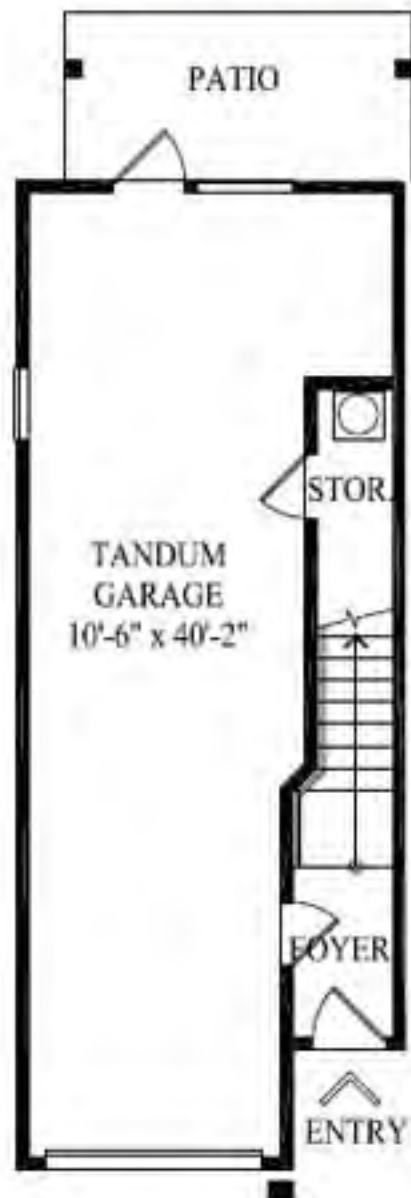
UPPER FLOOR PLAN

679 S.F. (63.08 m²)

[CLICK HERE TO VIEW OUR OTHER FLOOR PLANS](#)

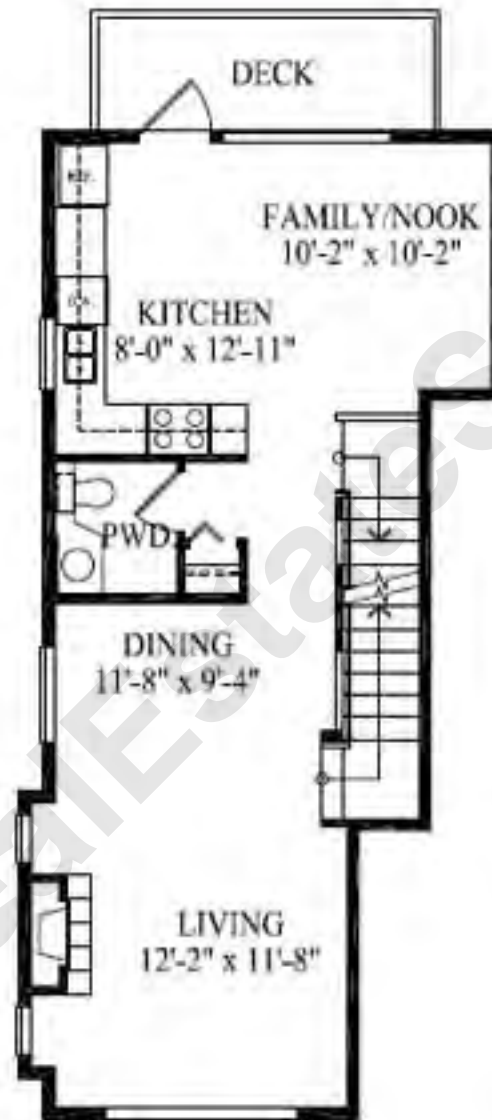
UNIT TYPE B5

3 BEDROOMS 1,469 S.F. (136.47 m²)



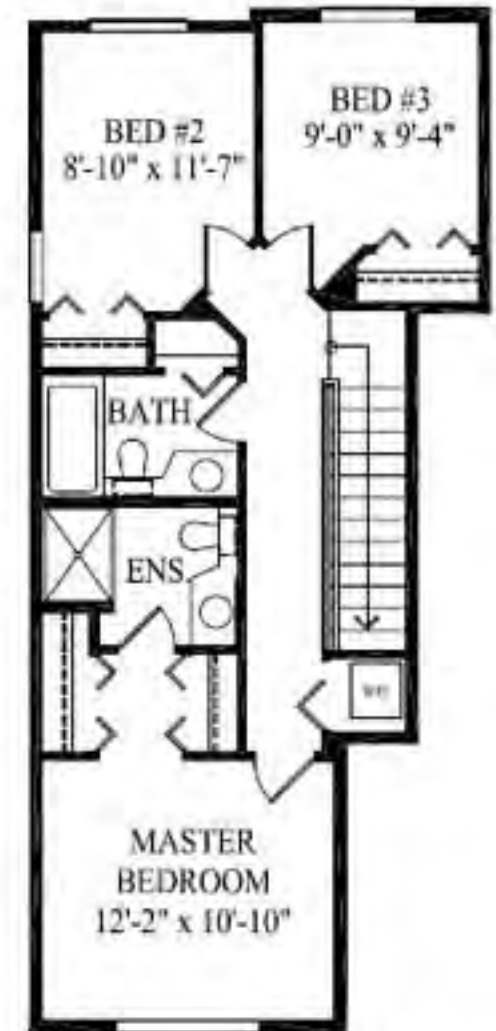
BASEMENT PLAN

123 S.F. (11.43 m²)



MAIN FLOOR PLAN

667 S.F. (61.97 m²)



UPPER FLOOR PLAN

679 S.F. (63.08 m²)

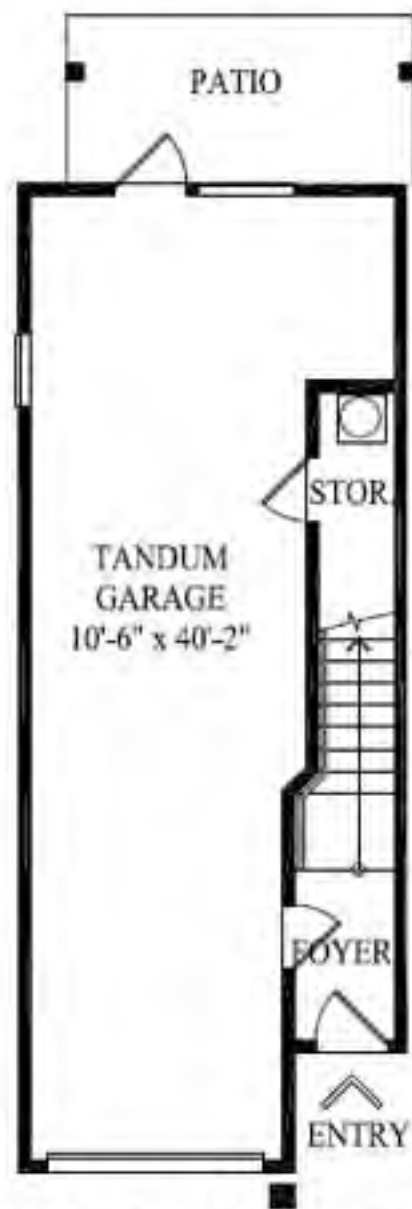
[CLICK HERE TO VIEW OUR OTHER FLOOR PLANS](#)

guildford green

[Home](#)[Features](#)[Floor Plans](#)[Neighbourhood](#)[Contact](#)

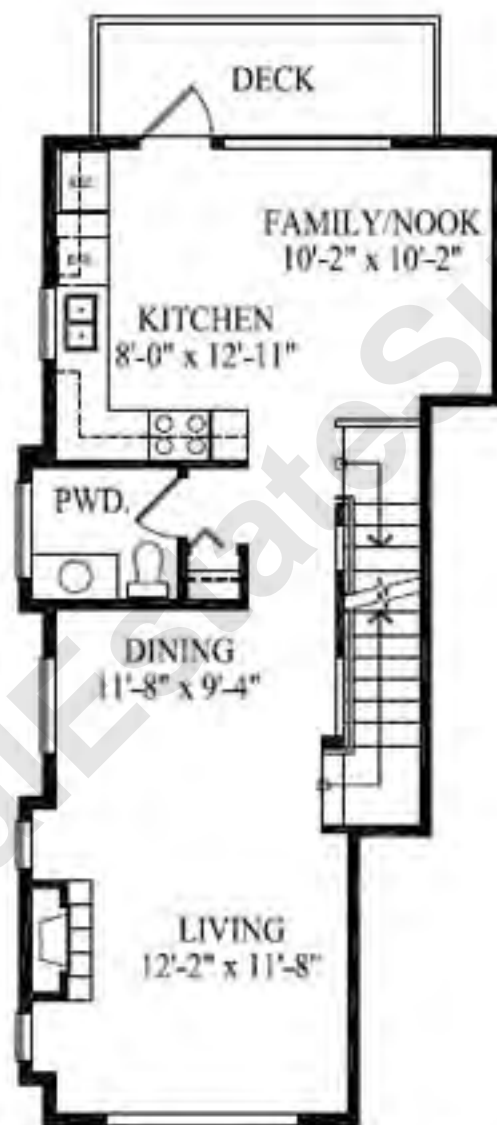
UNIT TYPE B6

3 BEDROOMS 1,483 S.F. (137.78 m2)



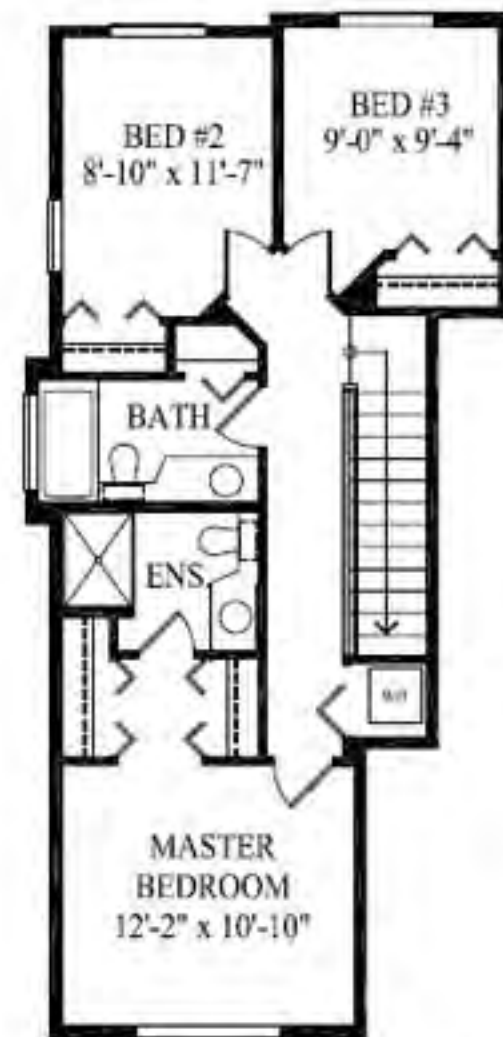
BASEMENT PLAN

123 S.F. (11.43 m2)



MAIN FLOOR PLAN

674 S.F. (62.62 m2)



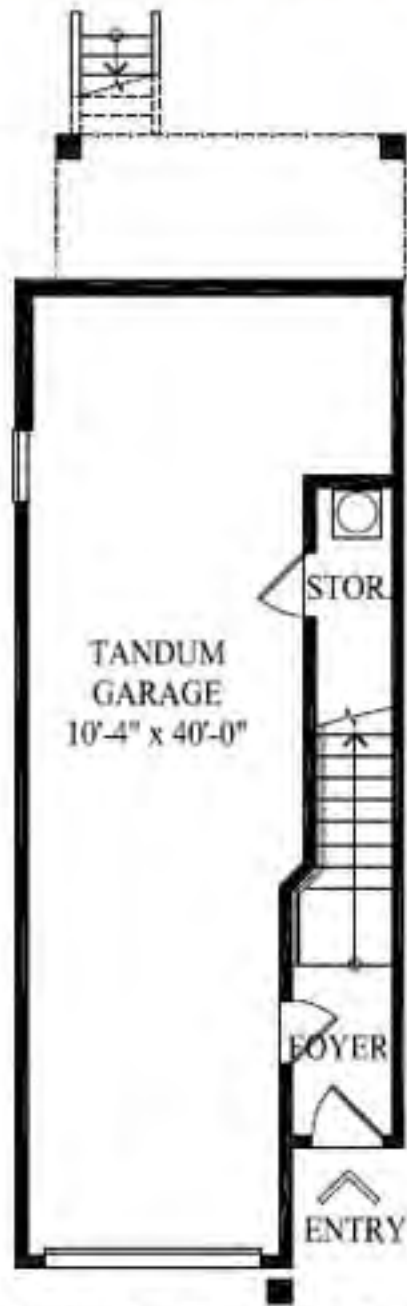
UPPER FLOOR PLAN

686 S.F. (63.73 m2)

[CLICK HERE TO VIEW OUR OTHER FLOOR PLANS](#)

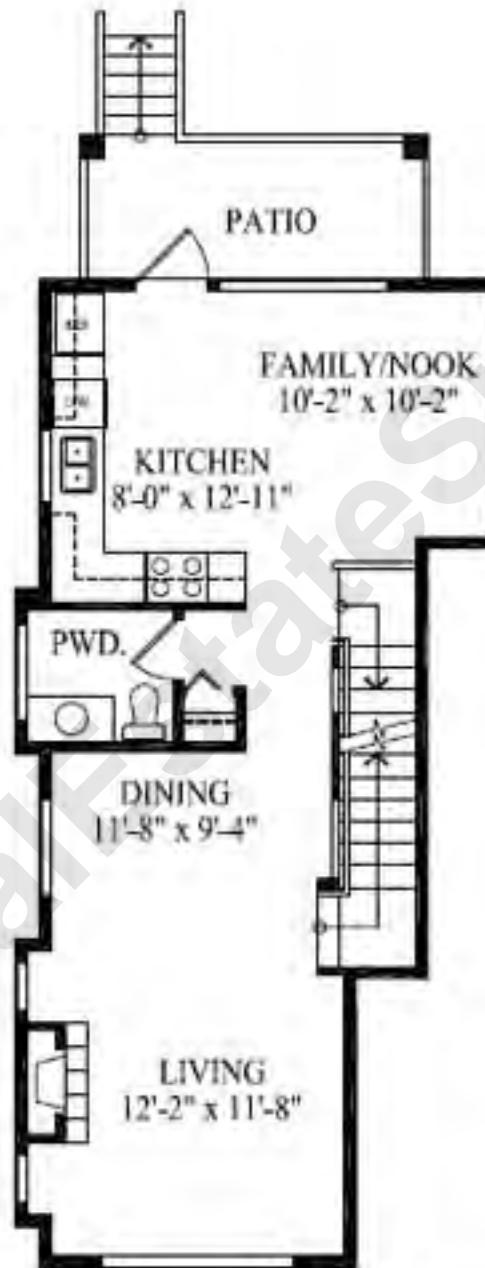
UNIT TYPE B7

3 BEDROOMS 1,483 S.F. (137.78 m²)



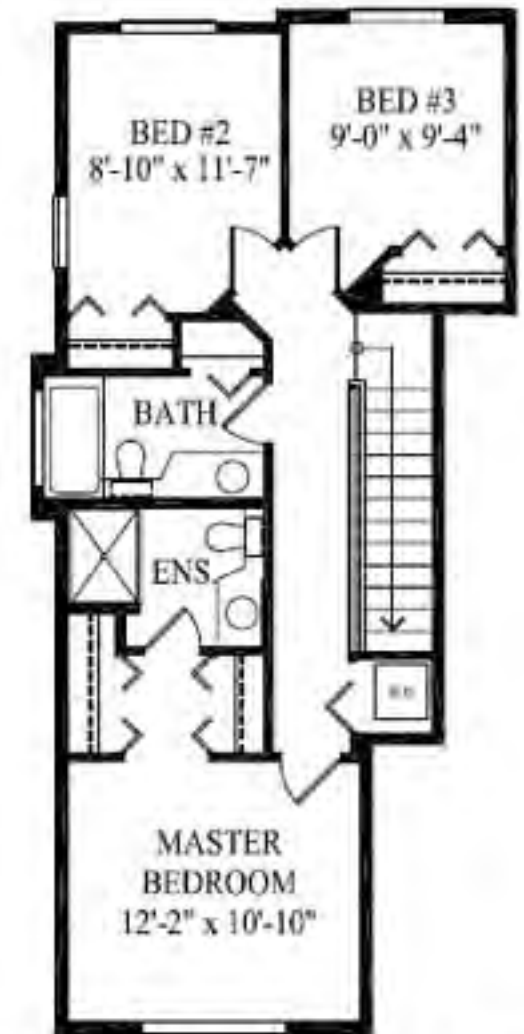
BASEMENT PLAN

123 S.F. (11.43 m²)



MAIN FLOOR PLAN

674 S.F. (62.62 m²)



UPPER FLOOR PLAN

686 S.F. (63.73 m²)

[CLICK HERE TO VIEW OUR OTHER FLOOR PLANS](#)

guildford green

Near all of Guildford's Great Ammenities and Attractions

[home](#)

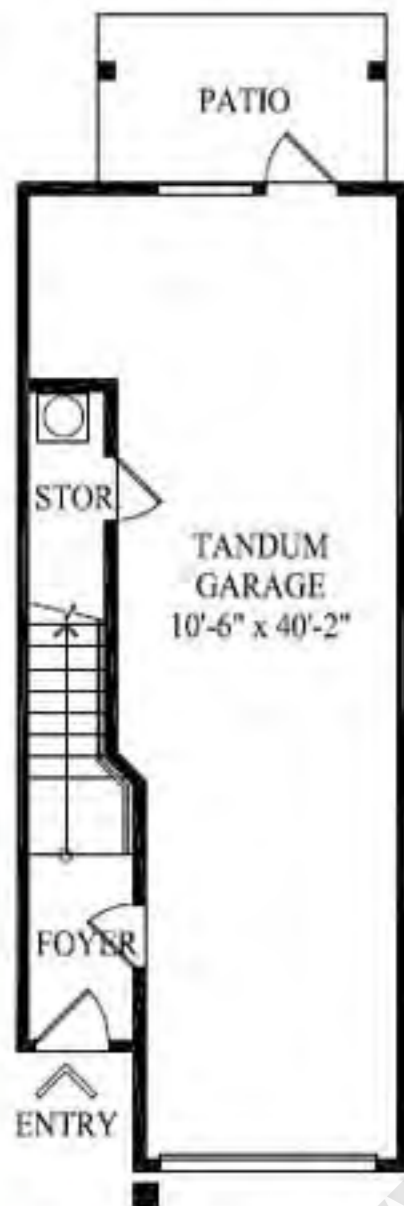
[site plans](#)

[gallery](#)

[contact](#)

UNIT TYPE C

3 BEDROOMS 1,485 S.F. (137.96 m2)



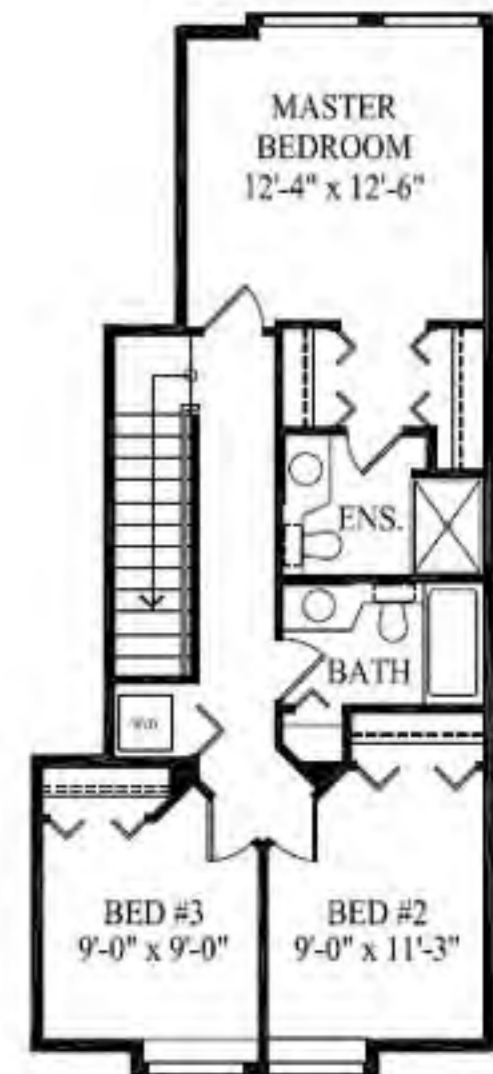
BASEMENT PLAN

126 S.F. (11.71 m2)



MAIN FLOOR PLAN

662 S.F. (61.50 m2)



UPPER FLOOR PLAN J

697 S.F. (64.75 m2)

[CLICK HERE TO VIEW OUR OTHER FLOOR PLANS](#)

guildford green

Home

Features

Floor Plans

Neighbourhood

Contact

UNIT TYPE C1

3 BEDROOMS 1,490 S.F. (138.43 m²)



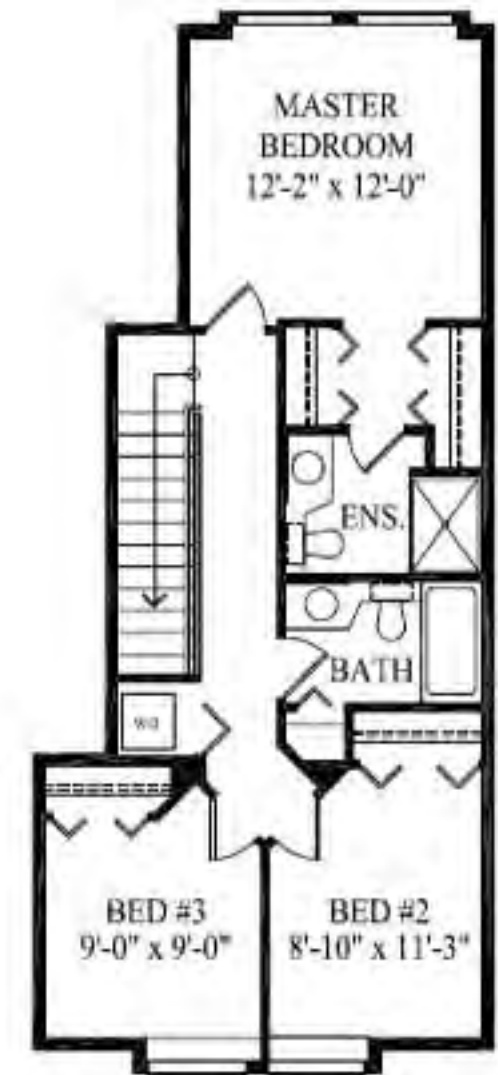
BASEMENT PLAN

124 S.F. (11.52 m²)



MAIN FLOOR PLAN

669 S.F. (62.15 m²)



UPPER FLOOR PLAN

697 S.F. (64.75 m²)

[CLICK HERE TO VIEW OUR OTHER FLOOR PLANS](#)

guildford green

Home

Features

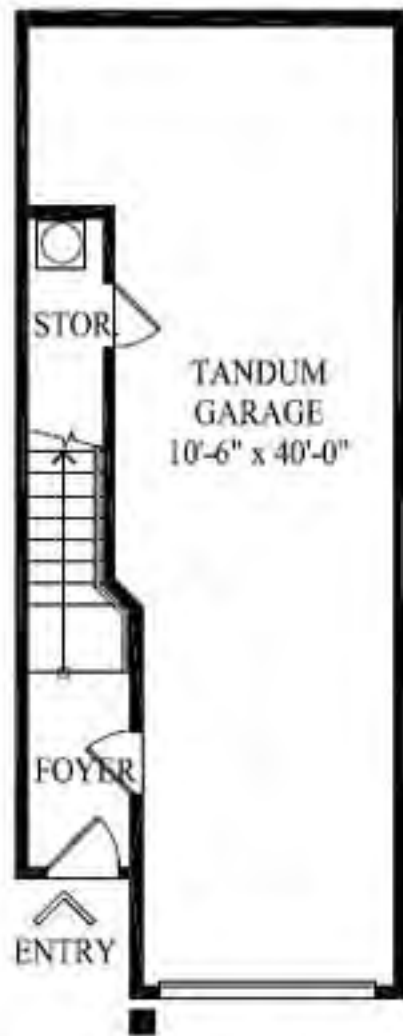
Floor Plans

Neighbourhood

Contact

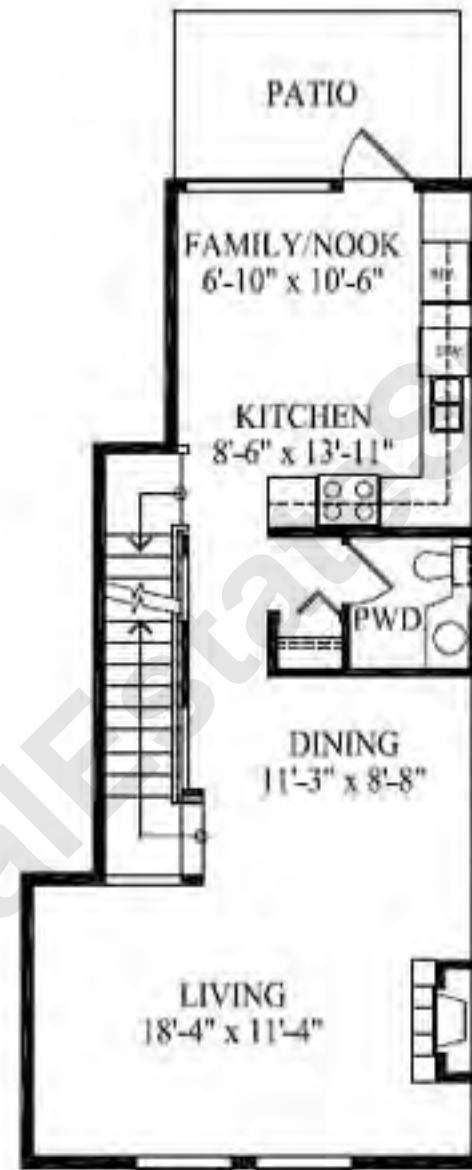
UNIT TYPE C2

3 BEDROOMS 1,485 S.F. (137.96 m2)



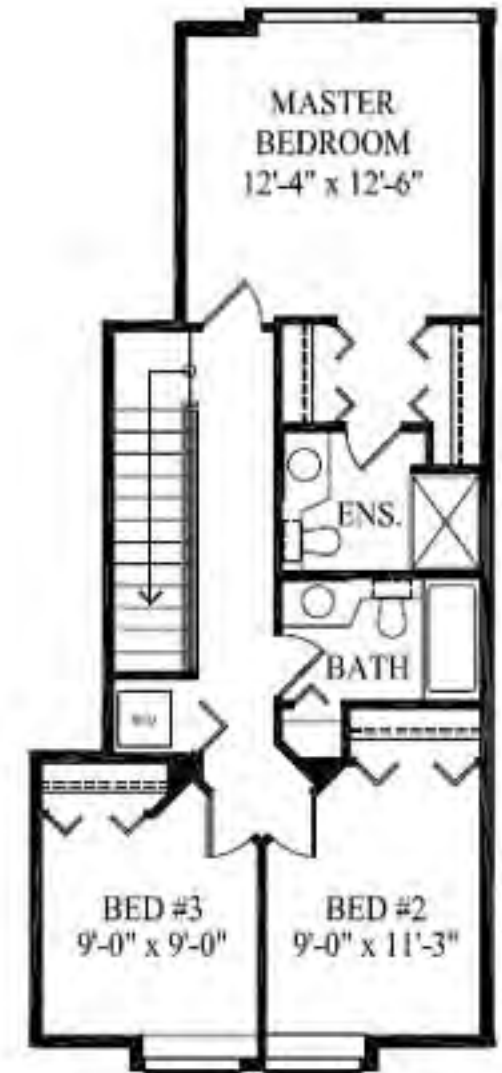
BASEMENT PLAN

126 S.F. (11.71 m2)



MAIN FLOOR PLAN

662 S.F. (61.50 m2)



UPPER FLOOR PLAN

697 S.F. (64.75 m2)

[CLICK HERE TO VIEW OUR OTHER FLOOR PLANS](#)

guildford green

Home

Features

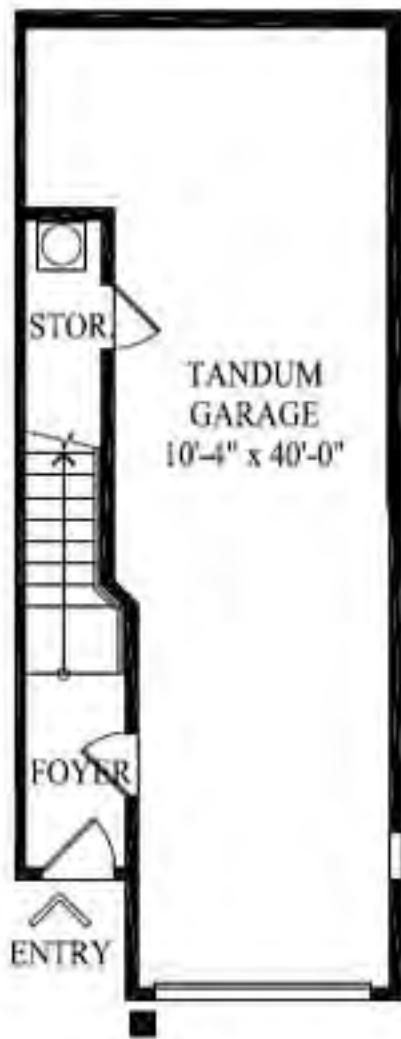
Floor Plans

Neighbourhood

Contact

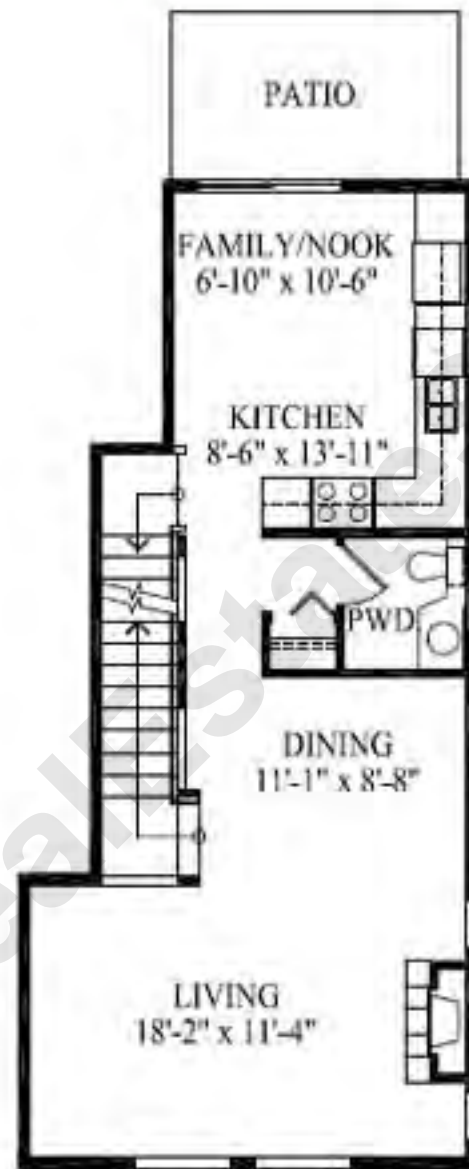
UNIT TYPE C3

3 BEDROOMS 1,483 S.F. (137.78 m²)



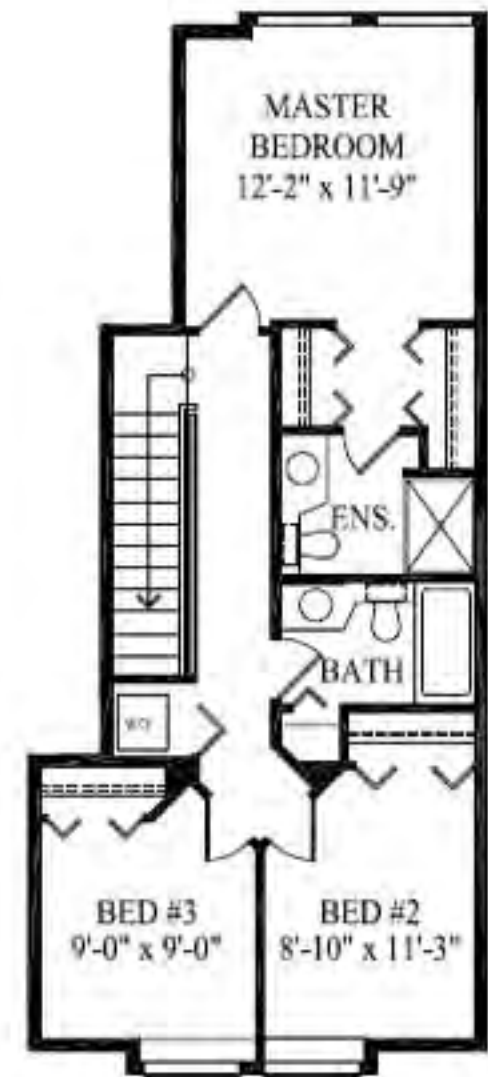
BASEMENT PLAN

124 S.F. (11.52 m²)



MAIN FLOOR PLAN

662 S.F. (61.50 m²)



UPPER FLOOR PLAN

697 S.F. (64.75 m²)

[CLICK HERE TO VIEW OUR OTHER FLOOR PLANS](#)

UNIT TYPE C4

3 BEDROOMS 1,485 S.F. (137.96 m²)



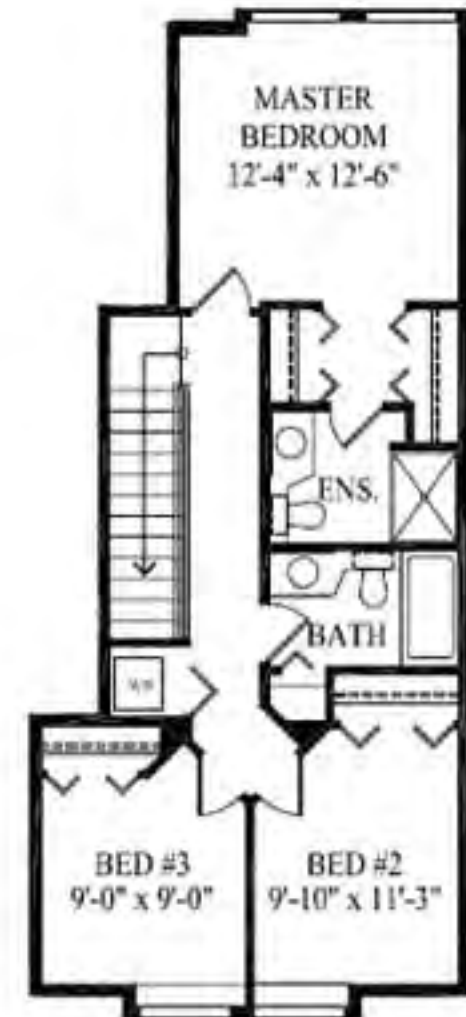
BASEMENT PLAN

126 S.F. (11.71 m²)



MAIN FLOOR PLAN

662 S.F. (61.50 m²)



UPPER FLOOR PLAN

697 S.F. (64.75 m²)

[CLICK HERE TO VIEW OUR OTHER FLOOR PLANS](#)

guildford green

Near all of Guildford's Great Ammenities and Attractions

[home](#)

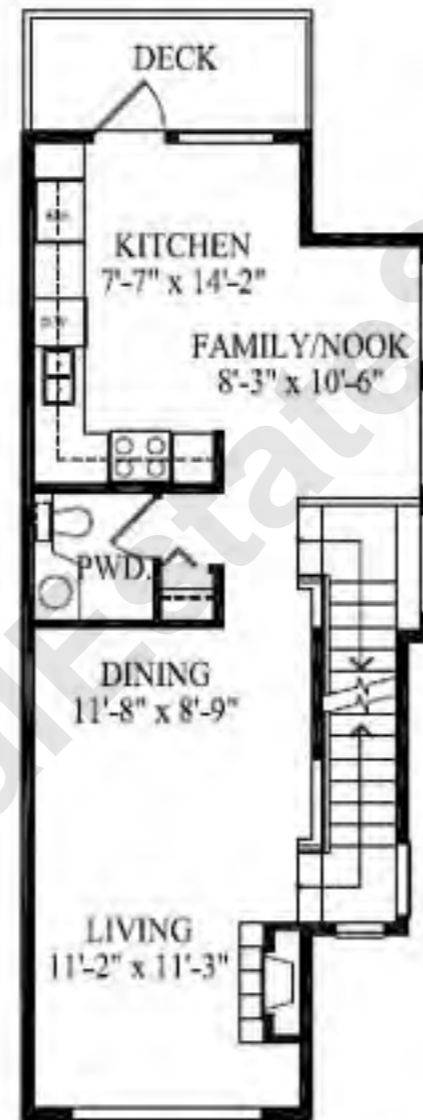
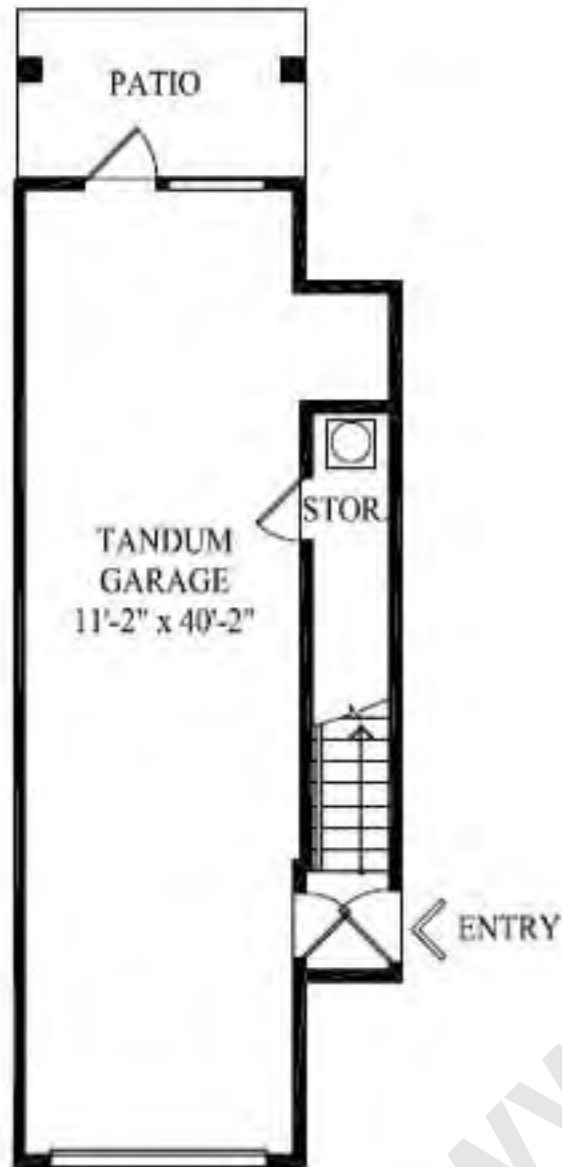
[site plans](#)

[gallery](#)

[contact](#)

UNIT TYPE D

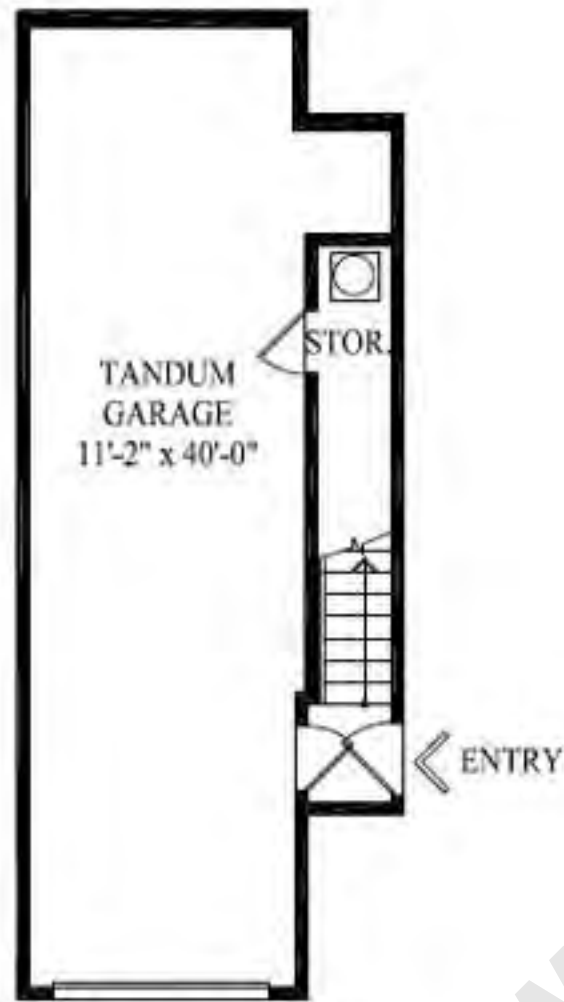
2 BEDROOMS 1,318 S.F. (122.45 m2)



[CLICK HERE TO VIEW OUR OTHER FLOOR PLANS](#)

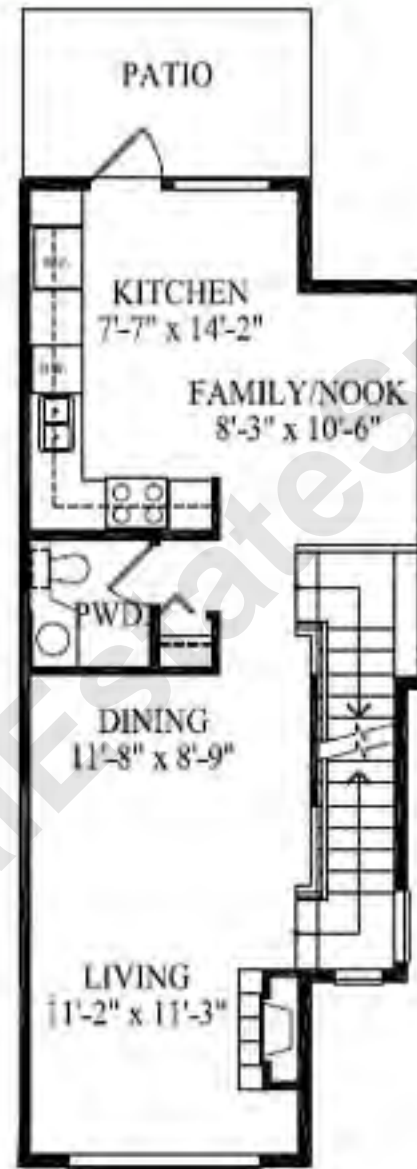
UNIT TYPE D1

2 BEDROOMS 1,318 S.F. (122.45 m²)



BASEMENT PLAN

102 S.F. (9.48 m²)



MAIN FLOOR PLAN

628 S.F. (58.34 m²)



UPPER FLOOR PLAN

588 S.F. (54.63 m²)

[CLICK HERE TO VIEW OUR OTHER FLOOR PLANS](#)

guildford green

Home

Features

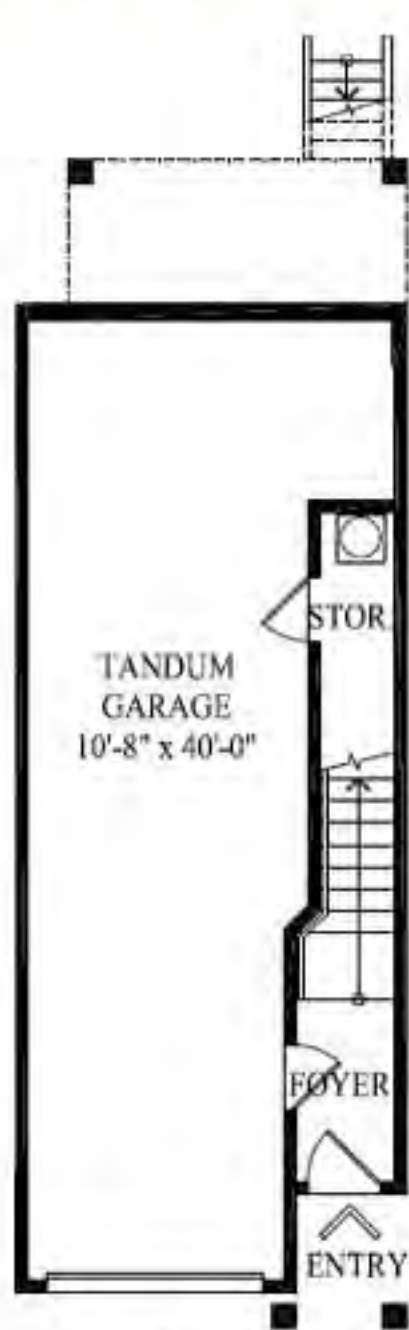
Floor Plans

Neighbourhood

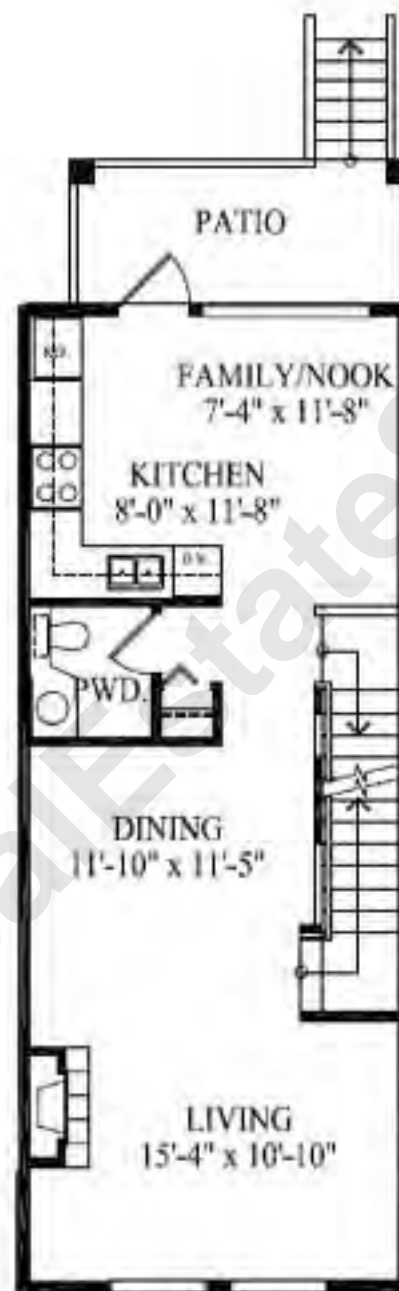
Contact

UNIT TYPE E

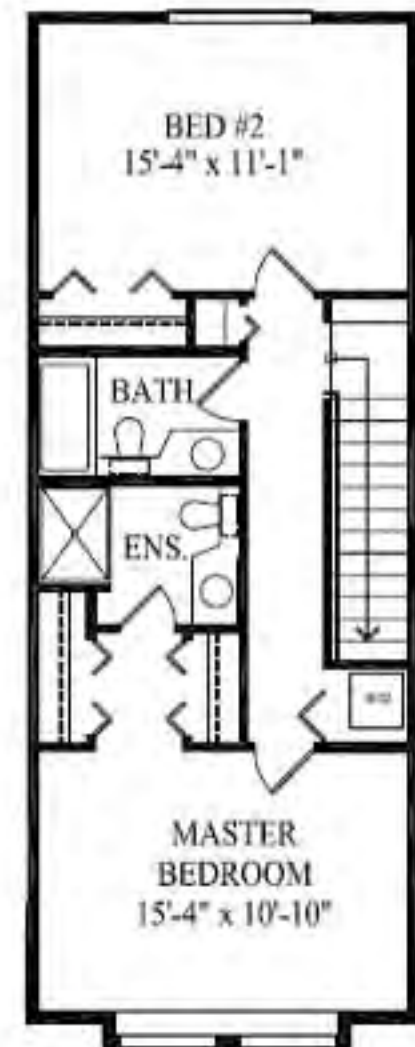
2 BEDROOMS 1,475 S.F. (137.03 m²)



BASEMENT PLAN



MAIN FLOOR PLAN



UPPER FLOOR PLAN

[CLICK HERE TO VIEW OUR OTHER FLOOR PLANS](#)