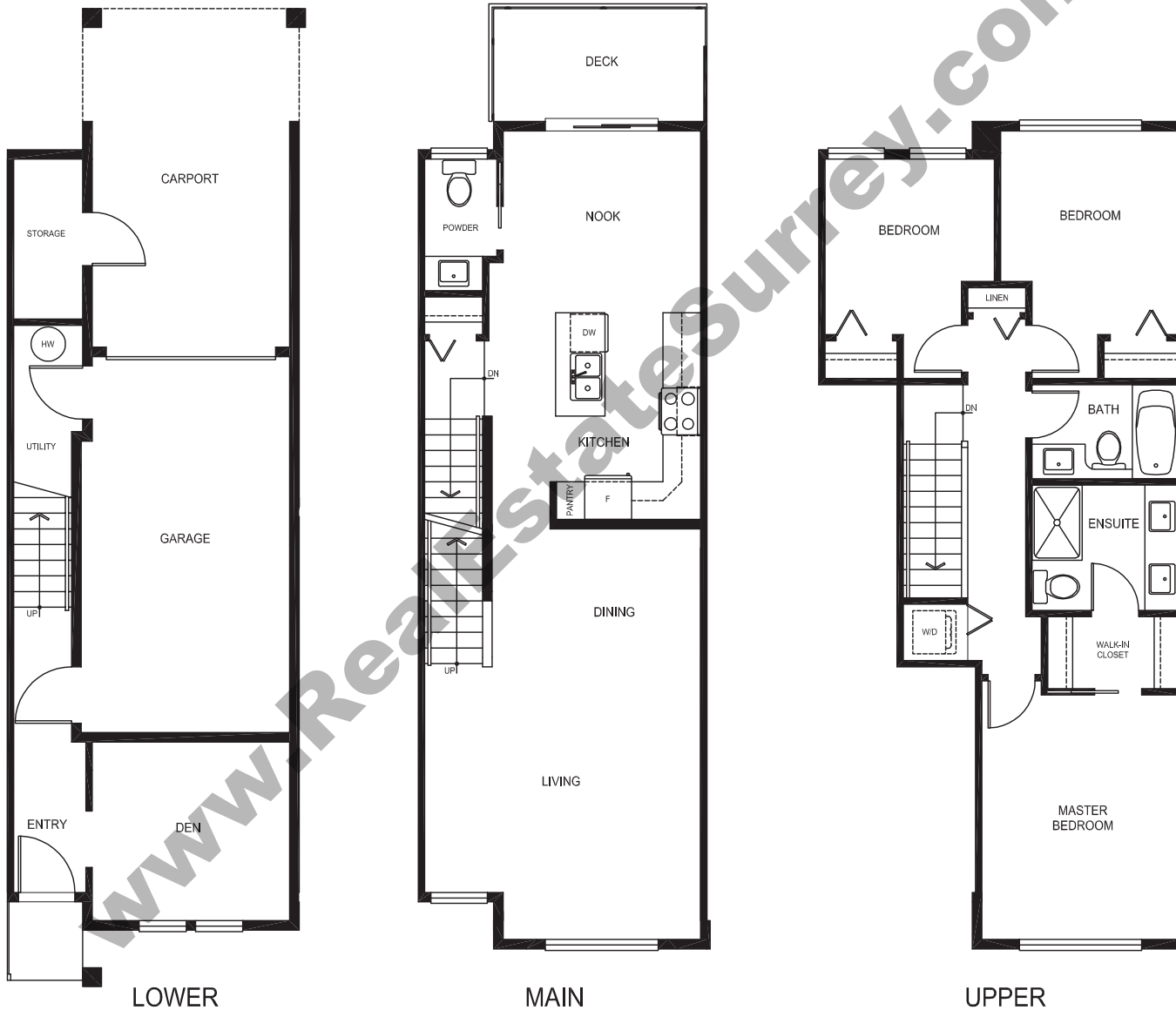


Bishop Creek

# Plan A

3 BED + DEN/2.5 BATH  
1,528-1,649 sf



Please ask your sales rep to view the specific plans for each home as variations may occur. In a continuing effort to improve our homes, Bluetree reserves the right to make any modifications and/or substitutions, without notice, should they be necessary. Final dimensions, square footage, specifications, floorplans, site grading and landscaping may vary. See your sales rep for complete details. E. & O.E.

Bishop Creek

# Plan B

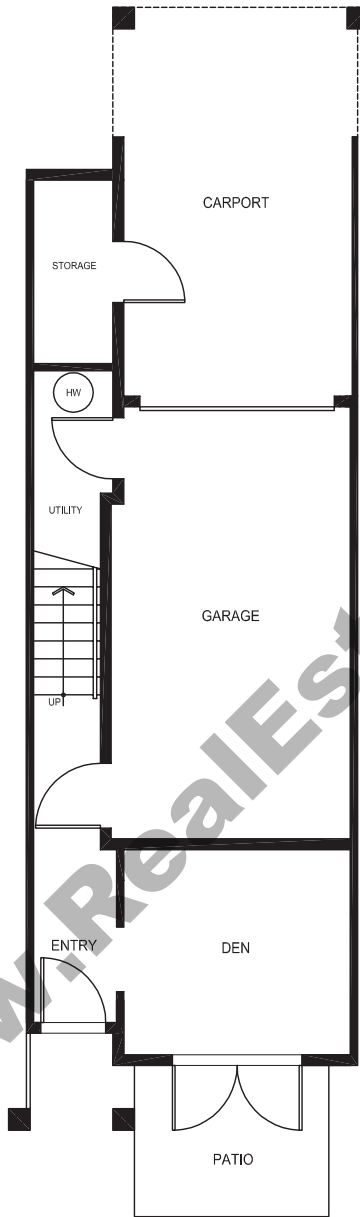
3 BED/2.5 BATH  
1,646 sf



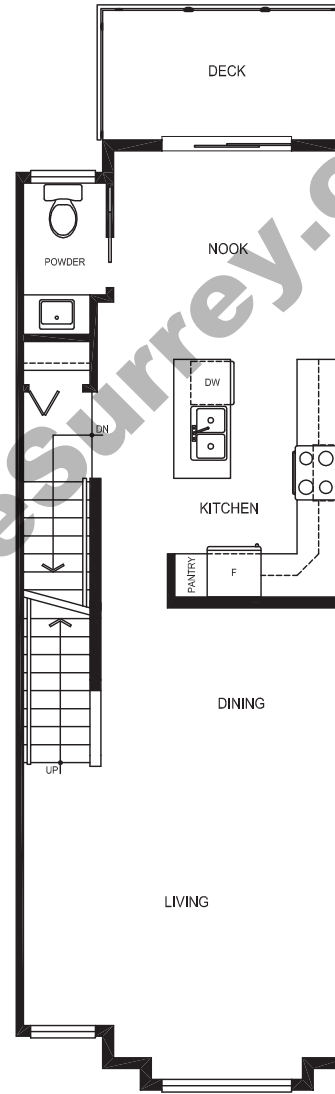
Bishop Creek

# Plan C

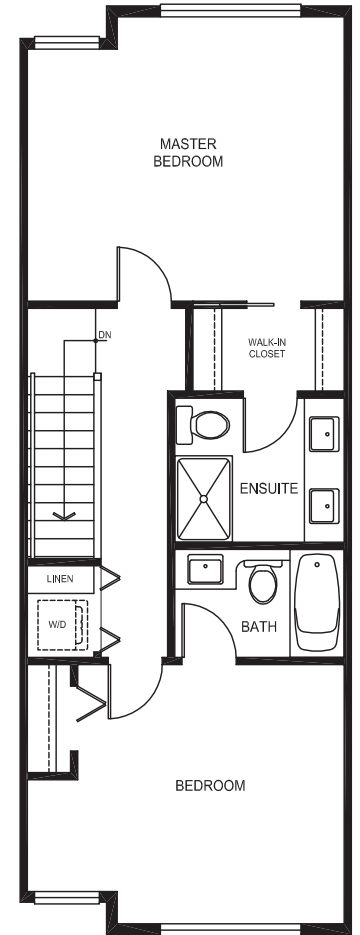
2 BED + DEN/2.5 BATH  
1,536-1,581 sf



LOWER



MAIN



UPPER

Bishop Creek

# Plan D

3 BED + BONUS ROOM/2.5 BATH  
1,581-1,709 sf

