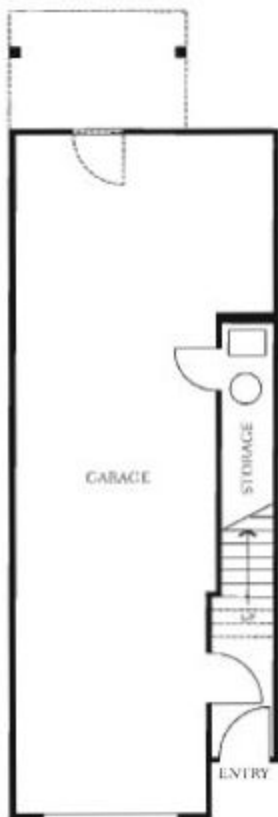


A | The Avalon

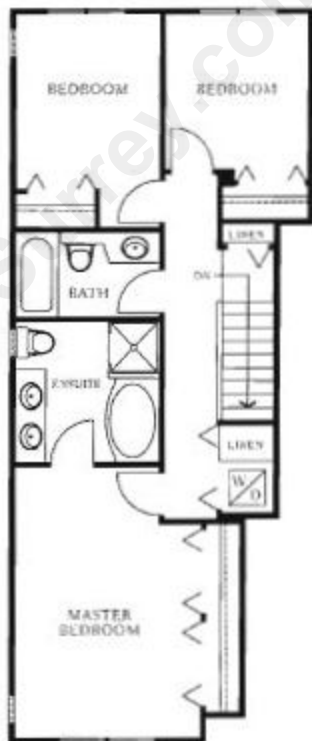
Three Bedroom, approx. 1367 sq.ft.



LOWER



MAIN



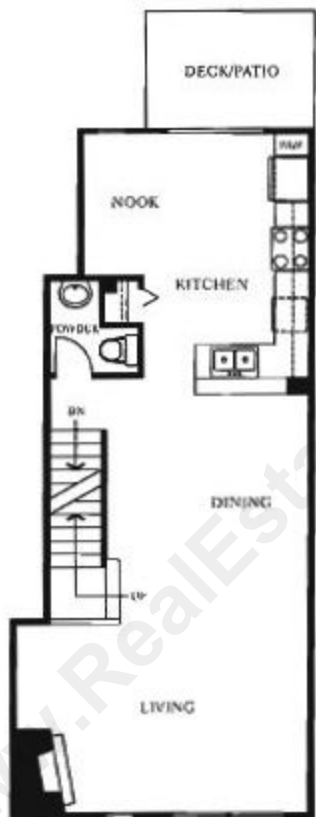
UPPER

B | The Blaine

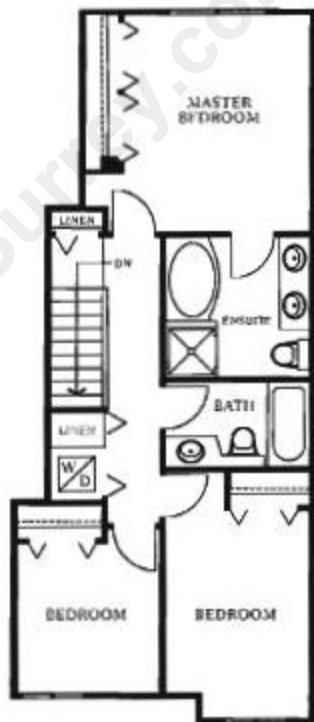
Three Bedroom, approx. 1356 sq. ft.



LOWER



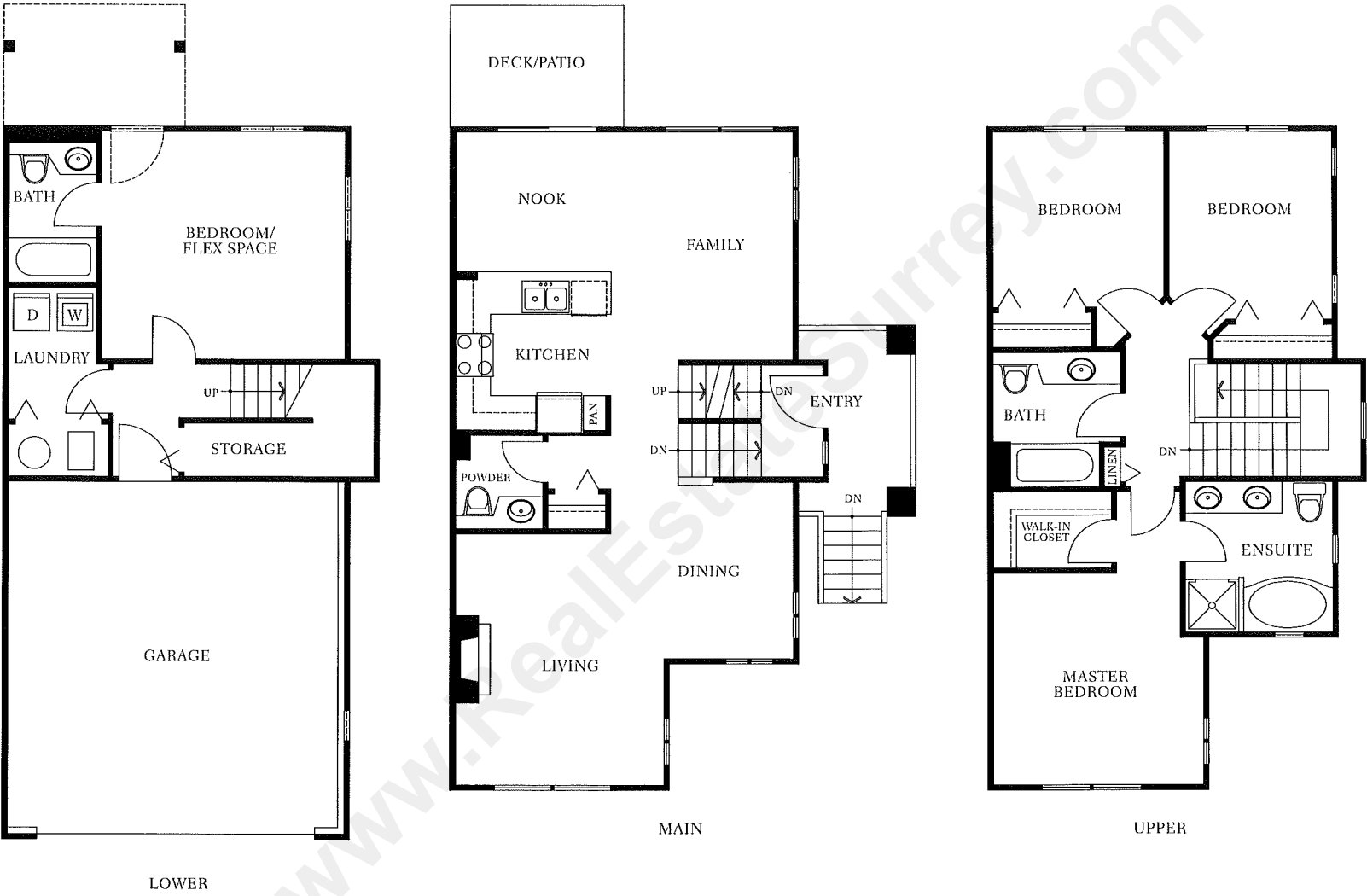
MAIN



UPPER

PLAN | C | The Camden

Four Bedroom, approx. 1776 sq.ft.



The builder reserves the right to make modifications or substitutions should they be necessary. The quality homes at The Uplands are built by Polygon Uplands Development Ltd. and Polygon Panorama Homes Ltd.

D | The Drake

Three Bedroom plus finished basement,
approx. 2045 sq. ft.